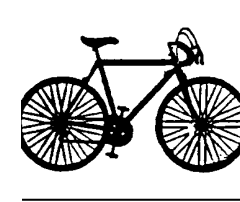
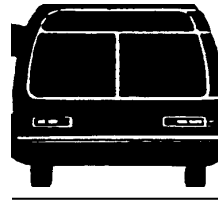
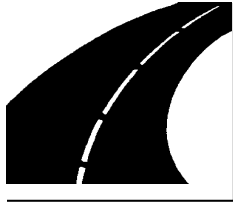


# JANESVILLE AREA METROPOLITAN PLANNING ORGANIZATION



Technical Advisory Committee: October 3, 2017  
Policy Board: November 29, 2017

**2018 – 2023  
TRANSPORTATION  
IMPROVEMENT PROGRAM**



**Metropolitan Planning Organization**

The Janesville Area MPO includes the following units of government: City of Janesville, City of Milton, Rock County, and the Towns of Harmony, Janesville, LaPrairie, Milton and Rock. The work of the Janesville Area MPO is directed by a Policy Board which is advised by a Technical Advisory Committee. The City of Janesville Public Works Department is the staff for the MPO.

<b>POLICY BOARD</b>			<b>TECHNICAL ADVISORY COMMITTEE</b>		
<b>COMMON COUNCIL</b>	<b>CITY OF MILTON</b>	<b>WisDOT</b>	<b>CITY OF JANESVILLE</b>	<b>ROCK COUNTY</b>	<b>FTA</b>
Doug Marklein	Anissa Welch Mayor	Steve Flottmeyer Planning Chief - SW Region	Ryan McCue Deputy City Manager	vacant County Engineer	Marisol Simon Region 5 - Regional Administrator
Sue Conley	<b>ROCK COUNTY</b>		Paul Woodard Director of Public Works (Vice Chair)	Colin Bynes Planning Director	<b>BICYCLE/PEDESTRIAN</b>
Jim Farrell	Alan Sweeney Rock County Board of Supervisors		Rebecca Smith Transit Director	Duane Jorgensen Highway Commissioner	Dean Paynter Rock Trail Coalition
Jens Jorgensen	<b>TOWN CHAIRPERSONS</b>		Duane Cherek Planning Services Manager (Chair)	Alan Sweeney Rock Co. Board of Supervisors	<b>TOWN CHAIRPERSONS</b>
Tom Wolfe	John Bergman Town of Harmony		Mike Payne City Engineer	<b>CITY OF BELOIT</b>	John Bergman Town of Harmony
Rich Gruber	Allan Arndt Town of La Prairie		Dennis Ryan Assistant City Engineer	T.J. Nee MPO Coordinator	Allan Arndt Town of La Prairie
Paul Williams	Bruce Schneider Town of Janesville		<b>CITY OF MILTON</b>	<b>WisDOT</b>	Bruce Schneider Town of Janesville
<b>CITY OF JANESVILLE</b>	Mark Gunn Town of Rock		Al Hulick City Administrator	Matt Schrieber Bureau of Planning	Mark Gunn Town of Rock
Mark Frietag City Manager	Bryan Meyer Town of Milton		Howard Robinson Director of Public Works	Tom Koprowski Urban and Regional Planner SW Region	Bryan Meyer Town of Milton
<b>PREPARED BY:</b>	Janesville Area MPO			<b>FHWA</b>	<b>FREIGHT</b>
				Mitch Batuzich Systems Planning & Performance Manager	Ken Lucht WSOR

The printing of this report was financed in part through a joint planning grant from the U.S. Department of Transportation, Federal Highway Administration, Federal Transit Administration and the Wisconsin Department of Transportation

# TRANSPORTATION IMPROVEMENT PROGRAM JANESVILLE METROPOLITAN PLANNING AREA

## 2018-2023: HIGHWAY, TRANSIT & BICYCLE/PEDESTRIAN PROJECT LISTING

### Table of Contents

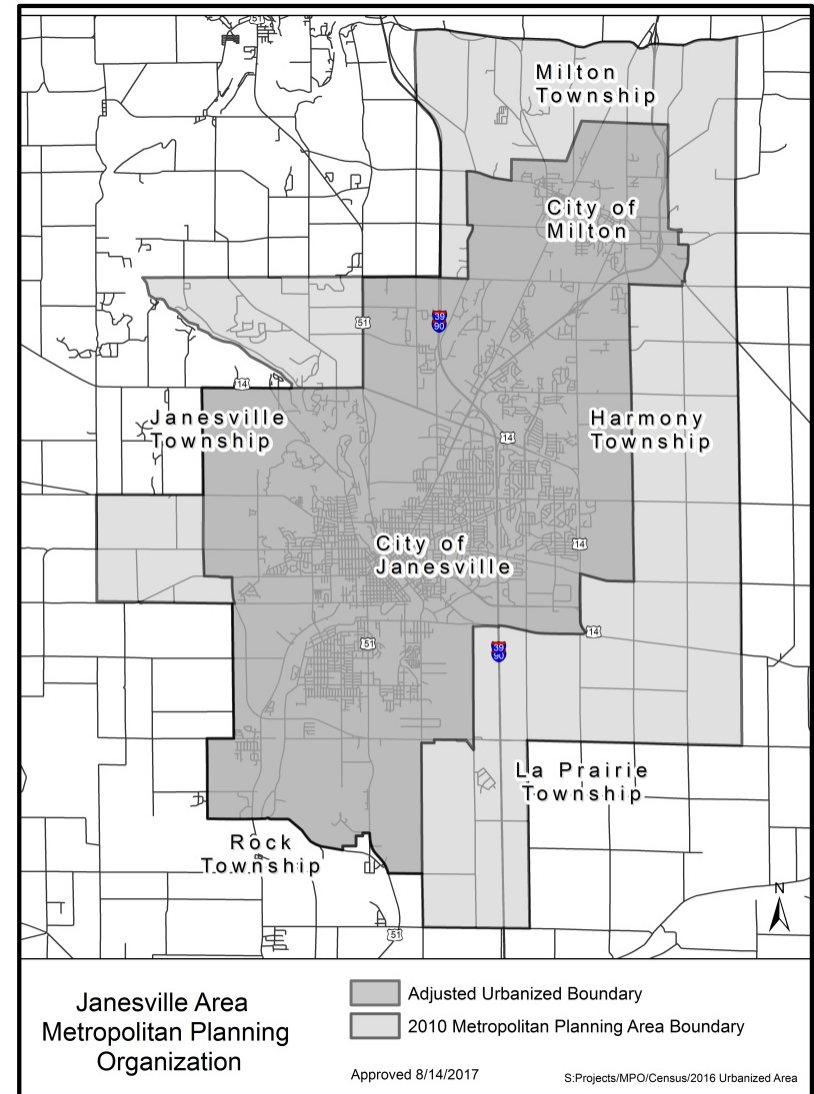
<b>INTRODUCTION</b> .....	1
<b>CHAPTER 1 - TRANSPORTATION PLANNING STATUS</b> .....	4
<b>CHAPTER 2 - DESCRIPTION OF PROGRAMMED ROADWAY, TRANSIT, AND TRANSPORTATION ALTERNATIVE PROJECTS AND LIST OF FISCALLY CONSTRAINED PROJECTS, 2018-2023</b> .....	6
Figure 1: Roadway Projects .....	8
Table 1: Roadway Projects .....	9
Figure 2: Funded Transportation Alternatives Projects .....	14
<b>CHAPTER 3 - DESCRIPTION OF ILLUSTRATIVE ROADWAY PROJECTS, 2018-2023</b> .....	16
<b>CHAPTER 4 - DESCRIPTION OF TRANSIT SERVICES AND FUNDING OF TRANSIT PROJECTS, 2018-2023</b> .....	17
<b>CHAPTER 5 - DESCRIPTION OF TRANSPORTATION ALTERNATIVES PROGRAM AND LIST OF ILLUSTRATIVE PROJECTS, 2018-2023</b> .....	19
<b>CHAPTER 6 - DESCRIPTION OF ELDERLY AND DISABLED TRANSPORTATION PROJECTS, 2018-2023</b> .....	21

Table 2: Elderly and Disabled Transportation .....	22
<b>CHAPTER 7 - TIP FINANCIAL PLAN AND IMPLEMENTATION STATUS REPORT .....</b>	<b>23</b>
Table 3: Fiscal Constraint Summary.....	24
<b>CHAPTER 8 - ENVIRONMENTAL JUSTICE IN THE TRANSPORTATION IMPROVEMENT PROGRAM .....</b>	<b>26</b>
Figure 3: Environmental Justice Roadway Projects .....	28
Figure 4: Environmental Justice Transportation Alternatives Projects .....	29
<b>CHAPTER 9 – PUBLIC PARTICIPATION IN THE TRANSPORTATION IMPROVEMENT PROGRAM.....</b>	<b>30</b>
<b>APPENDIX A - COMMENTS FROM PRIVATE MASS TRANSPORTATION PROVIDERS .....</b>	<b>35</b>
<b>APPENDIX B - PRIVATE ENTERPRISE PARTICIPATION PROCESS .....</b>	<b>37</b>
<b>APPENDIX C - RESOLUTION APPROVING THE 2018-2023 TRANSPORTATION IMPROVEMENT PROGRAM.....</b>	<b>39</b>

## INTRODUCTION

The Transportation Improvement Program (TIP) is a staged six-year program of transportation improvement projects. Each year the Janesville Area Metropolitan Planning Organization (MPO) updates the TIP for the Janesville Planning Area. Federal regulations require that certain federally funded transportation improvement projects in urbanized areas must be included in a TIP. The TIP shall be approved by the MPO Policy Board and approved by the Wisconsin Department of Transportation on behalf of the Governor prior to receiving the Federal Highway Administration's or Federal Transit Administration's acceptance.

The MPO conducts transportation planning under regulations applying to urbanized areas with populations under 200,000 and with attainment status for air quality. The U.S. Environmental Protection Agency may designate Rock County as a non-attainment area in the future. In order to be prepared should this happen, the MPO will continue to monitor congestion problems and air quality compliance despite the positive air quality status currently held.



## TIP Requirements

The development and format of the TIP must adhere to the following requirements:

- a) Include a four-year priority list of projects significant to the region;
- b) Include a financial plan;
- c) Include highway, transit, and bicycle/pedestrian projects to be funded with federal monies;
- d) Public notice and public comment opportunities for interested parties must be provided prior to TIP approval;
- e) Be approved by the Governor or the Governor's designee at WisDOT;
- f) Map all projects in relation to low-income/minority populations for Environmental Justice analysis;
- g) Project costs must be inflated to the year of spending using the inflation rate provided by WisDOT. The inflation rate is based on guidance from WisDOT and was developed using the CPI.

## TIP Abbreviations

Numerous acronyms and abbreviations are used throughout the TIP. A list of these is provided below:

ADA - Americans with Disabilities Act  
ARRA – American Recovery and Reinvestment Act  
BTC - Blackhawk Technical College  
COJ - City of Janesville  
COM - City of Milton  
CTH - County Trunk Highway  
FTA - Federal Transit Administration  
FHWA - Federal Highway Administration  
HT - Harmony Township  
JAMPO - Janesville Area Metropolitan Planning Organization  
JT - Janesville Township  
JTS - Janesville Transit System  
LRTP – Long Range Transportation Plan  
LT - LaPrairie Township

MT – Milton Township  
MPO – Metropolitan Planning Organization  
NHS - National Highway System  
RC - Rock County  
RCST - Rock County Specialized Transit  
RT - Rock Township  
STH - State Highway  
STP - Surface Transportation Program  
TDP – Transit Development Plan  
USH - United States (Federal) Highway  
WisDOT- Wisconsin Department of Transportation

Highway, Transit, and Bicycle/Pedestrian projects for the TIP were solicited from the City of Janesville, the City of Milton, the Towns of Harmony, Janesville, LaPrairie, Rock, and Milton, Rock County, and WisDOT. Projects are included in the TIP if they are within the metropolitan planning area boundary. Inclusion is based on funding availability and compliance with the MPO's short and long range plans.

MPO-member jurisdictions, including WisDOT, submit TIP projects in current year dollars. Staff then applies a yearly inflation factor of 1.8% to bring the values into year of spending. The TIP is prepared through a cooperative effort and is openly discussed among MPO-member jurisdictions, the Janesville Transit System, and other local agencies that implement transportation projects. A *draft* copy of the TIP is reviewed annually by the MPO Technical Advisory Committee. This meeting is open to the public, and noticed as such in the local newspaper and City of Janesville website. The draft TIP is also made available to local units of governments, the public libraries and the private mass transportation providers listed in Appendix A. After the TIP is reviewed and approved by the Technical Committee, the document is forwarded to the MPO Policy Board for final local review. Following Policy Board approval, the TIP is submitted to the appropriate state and federal agencies for approval. With approval, WisDOT will include the Janesville Area TIP in the Statewide Transportation Improvement Program (STIP).

## 2018-2023 TIP Review Schedule

MPO Technical Advisory Committee: October 3, 2017

MPO Policy Board: November 29, 2017

The Policy Board resolution adopting the document is in Appendix C. The MPO Policy Board's adoption of this document constitutes the MPO's approval of the projects included for funding. Prioritization is shown by construction year for each jurisdiction, but may be amended if necessary. Furthermore, it is understood by the Policy Board that only those projects that are funded with state and federal dollars contained in WisDOT's local program for the MPO planning area are officially endorsed.

## Annual Listing of Obligated Federally Funded Projects

The MPO will annually make available to the public a listing of federally funded projects for which funding was obligated in the previous year. The complete listing of projects will be posted to the MPO webpage within 90 days of the beginning of the calendar year.

## TIP Amendments

A TIP amendment is required in the following situations; as defined in the MPO's Public Participation Plan and adopted by the Policy Board.

### No Amendment Required

- Schedule
  - Changing the implementation schedule for projects within the first four-years of the TIP
- Scope
  - Changes in scope (character of work or project limits) while remaining reasonably consistent with the approved project.
- Funding
  - Changing the source (fed, state, local); category (IM, NHS, STP, earmarks); or amount of funding for a project without changing the scope of work or schedule for the project or any other project within the first four-years of the TIP.

When an administrative modification is made by MPO staff, the updated document is reposted to the MPO webpage and notice of the change is

communicated to WisDOT, FTA, FHWA, Technical Advisory Committee, and Policy Board.

Minor Amendment (processed through MPO committee structure and WisDOT. Public notice and a minimum 20-day comment period are required before action by the Policy Board)

- Schedule
  - Adding an exempt/preservation project to the first four-years of the TIP
- Scope
  - Changing the scope (character of work or project limits) of an exempt/preservation project within the first four-years of the TIP such that the current description is no longer reasonably accurate.
- Funding
  - Change in project funding that impacts the funding for other projects within the first four-years of the TIP forcing any exempt/preservation project out of the four-year window.

Major Amendment (public involvement opportunity and processed through MPO committee structure and WisDOT)

- Schedule
  - Adding a non-exempt/expansion project to the first four years of the TIP, including advancing a project for implementation from an illustrative list or from the out-years of the TIP.
    - Moving a non-exempt/expansion project out of the first four years of the TIP.
- Scope
  - Significantly changing the scope (character of work or project limits) of a non-exempt/expansion project within the first four years of the TIP such that current description is no longer reasonably accurate.
- Funding
  - Adding or deleting any project that exceeds the less of
    - 20% of the total Federal funding programmed for the calendar year, or
    - \$1,000,000

## CHAPTER 1 - TRANSPORTATION PLANNING STATUS

The projects included in the 2018-2023 TIP are based on the short range and long range plans for the Janesville area, and are consistent with these plans. The following sections briefly describe the type of short and long range plans used by the MPO.

### Short Range Plans

#### Transit Development Plan

On an approximate five-year basis, the City of Janesville and the Janesville Area MPO prepare a Transit Development Plan (TDP) update. The 2017 TDP evaluates service efficiency, route alignments, and makes service recommendations for the following five years. The 2018-2023 TIP identifies projects for transit operations and capital improvement projects. By adopting the 2018-2023 TIP, the MPO Policy Board finds that all projects included in this document are consistent with the goals, objectives, and policies of the most recently adopted 2017 Transit Development Plan.

### Long Range Plans

#### MPO Transportation Plan

The Long Range Transportation Plan, adopted in 2016, identifies the Janesville Area MPO planning area's existing transportation conditions and those areas where improvements should be made to adequately provide a cost effective and efficient transportation system. Projects in the TIP have been listed or identified in the 2050 Janesville Area MPO Long-Range Transportation Plan. By adopting the 2018-2023 TIP, the MPO Policy Board finds that all projects included in this document are consistent with the goals, objectives, and policies of the Long Range Transportation Plan.

#### Critical Area Plans

The City of Janesville projects included in the 2018-2023 TIP are consistent with the recommendations of the applicable critical area plans.

### Financial Capacity Planning

The United States Department of Transportation has identified financial capacity planning as a national emphasis area for inclusion in the TIP. The 2015-2050 Janesville Area Long Range Transportation Plan includes project cost analysis, funding projections of implementing recommended alternatives.

**In compliance with FTA Circular 7008.1, this TIP has been prepared with due consideration given to the member jurisdiction's/MPO's ability to pay for the projects included herein. In addition, each year we provide the necessary self-certification required with the annual grant applications.**

### Clean Air Planning / Attainment Status

The Janesville planning area currently meets required clean air standards and is an attainment area. The MPO and JTS will work together to ensure that conformity with the standards specified in the Clean Air Act continues in the future. In accordance with the Federal Clean Air Act, all federally assisted highway and transit projects in non-attainment areas must be derived from transportation plans and transportation improvement programs that are in conformity with the criteria stated in the Act.

### FAST Act and the TIP

It is the intent of WisDOT and the MPO to advance only projects, including transit operating assistance, that are included in an approved TIP and STIP. Concerning the federal funding sources the MPO has identified for individual projects in its TIP, it is agreed that WisDOT can unilaterally interchange the various FHWA funding program sources without necessitating a STIP or TIP amendment, except that WisDOT must seek MPO staff approval to use allocated STP-Urban funds for projects not identified for that source of funding in the TIP.

The Fast Act made modest changes to the Federal-aid Highway funding programs established in MAP-21.



## **FAST Act Funding Program**

NHPP-National Highway Performance Program (on the NHS)

- Associated Prior Act: IM, NHS, BR

STBG-Surface Transportation Block Grant Program

- Associated Prior Act: STP, BR (not on the NHS), TAP, TE, SRTS Subcategorization for urban, flex, bridge, TA

## **Performance Based Planning**

MAP-21 and FAST ACT requires incorporation of Performance-Based Planning and Programming (PBPP) be used in development of the Metropolitan Planning Organization (MPO) Long-Range Transportation Plans (LRTP) and Transportation Improvement Plans (TIP). The Statewide and Nonmetropolitan Transportation Planning; Metropolitan Transportation Planning; Final Rule further defined the TIP shall include, to the maximum extent practicable, a description of the anticipated effect of the TIP toward achieving the 23 CFR 490 performance measures targets identified in the metropolitan transportation plan, linking investment priorities to those performance targets (23 CFR 450.326(d)).

The Janesville Area MPO adopted draft performance targets as part of the 2015-2050 Long Range Transportation Plan. Those targets were subject to further refinement, cooperation, and guidance.

## **2018 Safety Performance Target**

In conformance with FHWA's Safety Performance Final Rule (23 CFR 490), WisDOT set the following safety target for 2018:

- Number of fatalities – 2% reduction
- Rate of fatalities – 2% reduction
- Number of serious injuries – 5% reduction
- Number of Non-motorized fatalities and serious injuries – 5%

The Janesville Area MPO will work cooperatively with WisDOT and other partners to support the State's target. The MPO will:

- Program State projects in the TIP as requested by WisDOT; meet as needed to adopt amendments.
- Study potential safety improvements that can be made on the local road system.

- Continue to plan for and seek funding to implement bicycle and pedestrian infrastructure consistent with the 2015-2050 LRTP.
- Consider safety during STP Urban project selection process.

All of the programmed street/highway projects listed in the 2018-2023 TIP are major multi-year projects; therefore none of the projects will immediately contribute to the calendar year 2018 safety target. I-39/90 reconstruction and expansion is expected to significantly improve safety once completed. Several local projects will improve safety due to improved design for bicyclists and pedestrians:

- Milwaukee Street Bridge Reconstruction – wider sidewalks
- Ruger Avenue (Wuthering Hills to USH 14) Reconstruction – adding bike lanes and sidewalks
- Ruger Avenue (Court to Lexington) Resurfacing – intend to add bike lanes

The west side of the Town Square, including the TAP funded realignment of the Ice Age Trail, is expected to be completed in 2018. While there are no vehicle vs. pedestrian crashes on record from when the trail traversed the Parking Plaza, the Town Square improvement will separate non-motorized users from vehicular traffic and create an improved environment for non-motorized users.

## **Expedited Project Selection Procedures**

The Janesville Area MPO, WisDOT and the Janesville Transit System hereby agree to the following procedures in advancing projects from the approved TIP for federal funding commitment:

1. *The first year of the TIP constitutes an agreed-to list of projects for project selection purposes and no further project selection action is required by the MPO for WisDOT or the transit operator(s) to proceed with federal funding commitment.*
2. *Projects from the second, third or fourth year of the TIP can be advanced by WisDOT or the transit operator(s) for federal fund commitment without further project selection action by the MPO.*

3. *Concerning the federal funding sources identified for individual projects in the TIP, it is agreed that WisDOT may unilaterally interchange eligible FHWA funding program sources without necessitating an amendment, subject to the project selection authority federal regulations and state local program procedures reserve for the State and the MPO, and subject to reconciliation under item 5.*
4. *WisDOT can unilaterally interchange FTA Section 5309, Section 5339 and Section 5307 capital funds in urbanized areas between 50,000 and 200,000 population without necessitating a TIP amendment. FTA should be notified of any interchange of funds.*
5. *To maintain accountability and fiscal constraint as changes occur during implementation of the TIP, the MPO, WisDOT and the transit operator(s) will monitor projects in the TIP and account for all significant changes in scheduled years and costs in a TIP amendment at the midpoint of the calendar year. (MPOs on a two year TIP update cycle must also commit to truing up the TIP by amendment at the end of the first year along with declaring the second year of the TIP to be the agreed to list of projects for the second year of operation).*

## **CHAPTER 2 - DESCRIPTION OF PROGRAMMED ROADWAY, TRANSIT, AND TRANSPORTATION ALTERNATIVE PROJECTS AND LIST OF FISCALLY CONSTRAINED PROJECTS, 2018-2023**

This chapter presents all programmed and funded transportation projects in the Janesville planning area. Table 1 constitutes the agreed to list of fiscally constrained transportation projects.

### **Funding Availability**

Funding is available from federal, state and local sources to finance transportation projects in the Janesville Planning Area. All transportation projects that use federal or state funds must be included in the TIP. Several

funding programs are flexible and may be used for various modes of transportation:

### **Funding Codes**

STPBG-U - Surface Transportation Program (STP) - Urban  
 STPBG-BR - Bridge Replacement and Rehabilitation  
 STPBG-TAP – Transportation Alternatives Program  
 NHPP - National Highway Performance Program  
 SAF - STP - Safety  
 RU - STP - Non-Urban  
 FLX - STP - State Flexibility  
 WIS – State  
 IM - Interstate Maintenance  
 LRIP - Local Road Improvement Program  
 EN - STP Enhancements  
 STP-D - STP Discretionary Program  
 SAFE – WisDOT Safety Funds  
 HSIP – Highway Safety Improvement Program  
 TEA – Transportation Economic Assistance

### Transit

Sec. 5307 – Federal Transit operating and capital assistance funding  
 Sec. 5339 – Federal Transit Bus and Bus Facilities Formula Program  
 Sec. 5337 – Federal Transit State of Good Repair  
 Sec. 16(b)(2) - Capital Assistance Program  
 Sec. 5310 – Capital Assistance Program for Elderly & Disabled Riders  
 Sec. 5311 – Wisconsin Employment Transportation Assistance Program (WETAP)  
 85.20 - State Operating Assistance Fund  
 OTH – Other

### Local Codes:

COJ – City of Janesville  
 RC – Rock County  
 COM – City of Milton

TWN – Township

OTH - Other

The TIP document aims to accurately portray funding for projects. In most cases, a project phase is completely funded at the start of the project. Therefore, the TIP shows full funding for a project phase in the first year corresponding with the schedule date. The continuation of the project beyond the year of funding is shown by noting “cont’d” in the table, along with a note in the comments section indicating the calendar year in which funding for the phase of work was obligated.

#### Priorities for STP-Urban Funds

The MPO determines the use of STP Urban funds, which is allocated every other year in the odd year. WisDOT distributes funding to the rolling six-year program based on the projects an MPO already has programmed in its region. WisDOT’s management of the program encourages regions to spend allocations quickly in order to maximize the next allocation. The MPO will continue to use STP funds for major street projects. However, bus replacements are another high priority for the region and the MPO may re-program funds from a street project that is not meeting its construction schedule in order to purchase needed transit capital as well as maximize the next allocation of funding.

Figure 1: Roadway Projects

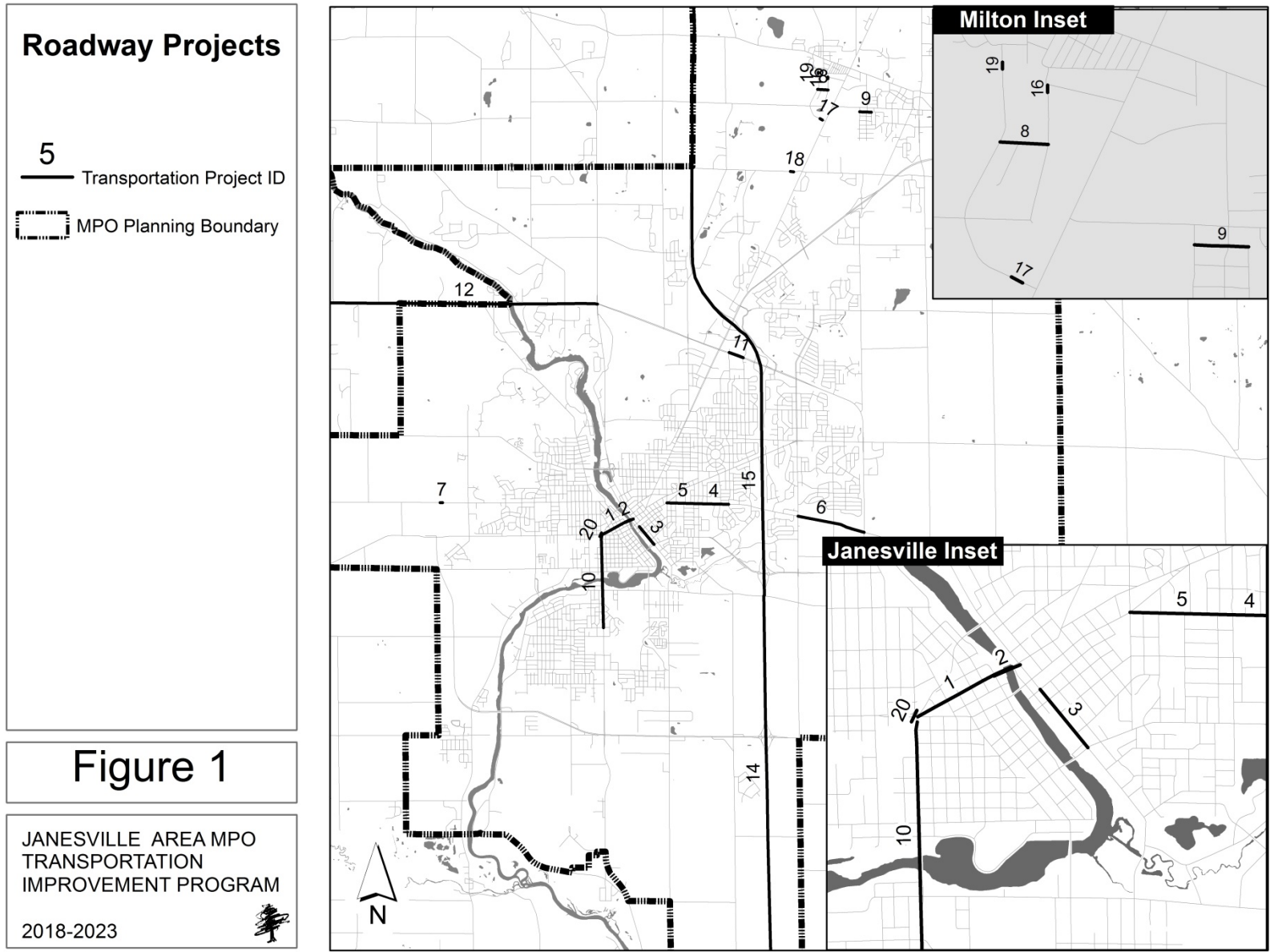


Table 1: Roadway Projects

TABLE 1 - JANESVILLE AREA MPO  
TIP Project listing 2018-2023

(\$1,000)

Funding shown in year of expenditure; 1.8% inflation added per year

Jurisdiction/Sponsor	Project Description	Type of Cost	January - December 2018				January - December 2019				January - December 2020				January - December 2021				January - December 2022 - 2023				Comments
			Fed	State	Local	Total	Fed	State	Local	Total	Fed	State	Local	Total	Fed	State	Local	Total					
<b>Roadway</b>																							
C. Janesville 1 371-17-001	Milwaukee St. Reconstruction; River to Locust	PE	-	-	285	285	-	-	-	-	-	-	-	-	-	-	-	-	-	-	-	-	PE locally funded
		ROW	-	-	-	-	-	-	-	-	-	-	-	-	-	-	-	-	-	-	-	-	STP capped; inflation added to local
		UTIL	-	-	-	-	-	-	-	-	-	-	-	-	-	-	-	-	-	-	-	-	0
		CONST	-	-	-	-	-	-	-	955	-	889	1,844	-	-	-	-	-	-	-	-	-	0
		TOTAL	-	-	285	285	-	-	-	-	955	-	889	1,844	-	-	-	-	-	-	-	-	-
Type	P			COJ					STPBG-U		COJ											Programmed	
C. Janesville 2 371-14-012	Milwaukee St. Bridge over Rock River, Reconstruction	PE	-	-	-	-	-	-	-	-	-	-	-	-	-	-	-	-	-	-	-	Listed in COJ CIP	
		ROW	-	-	-	-	-	-	-	-	-	-	-	-	-	-	-	-	-	-	-	-	5990-00-33/34
		UTIL	-	-	-	-	-	-	-	-	-	-	-	-	-	-	-	-	-	-	-	-	Design obligated 2014
		CONST	3,126	-	782	3,908	-	-	-	-	-	-	-	-	-	-	-	-	-	-	-	-	Design cost 192K Fed, 48K Local
		TOTAL	3,126	-	782	3,908	-	-	-	-	-	-	-	-	-	-	-	-	-	-	-	-	-
Type	P			COJ					STPBG-BR		COJ											Programmed	
C. Janesville 3 371-18-001	Rehabilitate S. Main Street from St. Lawrence Avenue to E. Racine Street	PE	-	-	36	36	-	-	-	-	-	-	-	-	-	-	-	-	-	-	-	-	0
		ROW	-	-	-	-	-	-	-	-	-	-	-	-	-	-	-	-	-	-	-	-	0
		UTIL	-	-	-	-	-	-	-	-	-	-	-	-	-	-	-	-	-	-	-	-	0
		CONST	-	-	-	-	-	-	150	367	517	-	-	-	-	-	-	-	-	-	-	-	0
		TOTAL	-	-	36	36	-	-	150	367	517	-	-	-	-	-	-	-	-	-	-	-	-
Type	P			COJ				LRIP		COJ												Programmed	
C. Janesville 4 371-18-002	Rehabilitate Ruger Avenue from Randall to S. Lexington	PE	-	-	-	-	-	-	-	-	-	41	41	-	-	-	-	-	-	-	-	0	
		ROW	-	-	-	-	-	-	-	-	-	-	-	-	-	-	-	-	-	-	-	-	0
		UTIL	-	-	-	-	-	-	-	-	-	-	-	-	-	-	-	-	-	-	-	-	0
		CONST	-	-	-	-	-	-	-	-	-	-	-	-	-	150	268	418	-	-	-	-	0
		TOTAL	-	-	-	-	-	-	-	-	-	-	41	41	-	150	268	418	-	-	-	-	-
Type	P										COJ			LRIP		COJ						Programmed	
C. Janesville 5 371-18-003	Rehabilitate Ruger Avenue from Court/Garfield to Randall	PE	-	-	-	-	-	-	-	-	-	-	-	-	-	-	-	-	-	-	-	0	
		ROW	-	-	-	-	-	-	-	-	-	-	-	-	-	-	-	-	-	-	-	-	0
		UTIL	-	-	-	-	-	-	-	-	-	-	-	-	-	-	-	-	-	-	-	-	0
		CONST	-	-	-	-	-	-	-	-	-	-	-	-	-	-	-	-	-	-	-	-	0
		TOTAL	-	-	-	-	-	-	-	-	-	-	-	-	-	-	-	-	-	-	-	-	-
Type	P													LRIP		COJ						Programmed	

2022 - 2023 are considered the out years of the TIP and are therefore NOT PROGRAMMED.



TABLE 1 - JANESVILLE AREA MPO

TIP Project listing 2018-2023

(\$1,000)

Funding shown in year of expenditure; 1.8% inflation added per year

Jurisdiction/Sponsor		Project Description	Type of Cost	January - December 2018				January - December 2019				January - December 2020				January - December 2021				January - December 2022 - 2023				Comments				
RC = Rock County	COJ = Janesville			COM = City of Midd	Fed	State	Local	Total	Fed	State	Local	Total	Fed	State	Local	Total	Fed	State	Local	Total	Fed	State	Local		Total			
<b>Roadway</b>																												
State of Wis.	Center Ave (51): Pavement	PE	705	-	235	940	-	-	-	-	-	-	-	-	-	-	-	-	-	-	-	-	-	5350-02-00/70				
10 371-18-004	Replacement Nicolet Court & bridge (B-53-153) superstructure replacement	ROW	-	-	-	-	-	-	-	-	-	-	-	-	-	-	-	-	-	-	-	-	-	0				
		UNTIL	-	-	-	-	-	-	-	-	-	-	-	-	-	-	-	-	-	-	-	-	-	-	Design obligated 2018			
		CONST	-	-	-	-	-	-	-	-	-	-	-	-	-	-	-	-	-	-	-	-	-	-	-	Construction anticipated 2025		
		TOTAL	705	-	235	940	-	-	-	-	-	-	-	-	-	-	-	-	-	-	-	-	-	-	-	Advanceable to 2023		
Type	P	NHPP	-	COJ	-	-	-	-	-	-	-	-	-	-	-	-	-	-	-	-	-	-	-	-	0			
State of Wis.	USH 14: Lexington to Pontiac reconstruct to Urban	PE	cont'd	-	-	-	cont'd	-	-	-	-	-	-	-	-	-	-	-	-	-	-	-	-	-	5569-00-01-71			
11 371-11-003		ROW	-	-	-	-	-	-	-	-	-	-	-	-	-	-	-	-	-	-	-	-	-	-	Const. delayed until 2021			
		UNTIL	-	-	-	-	-	-	-	-	-	-	-	-	-	-	-	-	-	-	-	-	-	-	-	Advanceable to 12/12/2017		
		CONST	-	-	-	-	-	-	-	-	-	-	-	-	-	-	-	-	-	-	-	-	-	-	-	-	2,418	
		TOTAL	-	-	-	-	-	-	-	-	-	-	-	-	-	-	-	-	-	-	-	-	-	-	-	-	2,418	
Type	P	-	-	-	-	-	-	-	-	-	-	-	-	-	-	-	-	-	-	-	-	-	-	-	0			
State of Wis.	USH 14: CTH M to USH 51 mill and overlay 12.64 miles	PE	cont'd	-	-	-	-	-	-	-	-	-	-	-	-	-	-	-	-	-	-	-	-	-	5155-02-30/21/40/62			
12 371-10-003		ROW	-	-	-	-	-	-	-	-	-	-	-	-	-	-	-	-	-	-	-	-	-	-	0			
		UNTIL	-	-	-	-	-	-	-	-	-	-	-	-	-	-	-	-	-	-	-	-	-	-	-	-	-	
		CONST	-	-	-	-	5,027	1,256	-	6,283	cont'd	-	-	-	-	-	-	-	-	-	-	-	-	-	-	-	-	-
		TOTAL	-	-	-	-	5,027	1,256	-	6,283	-	-	-	-	-	-	-	-	-	-	-	-	-	-	-	-	-	0
Type	P	-	-	-	-	NHPP	WIS	-	-	-	-	-	-	-	-	-	-	-	-	-	-	-	-	-	-	Programmed		
State of Wis.	I-39/90 IIL state line to USH 12/18 Program Control and Corridor Tasks	PE	-	-	-	-	cont'd	-	-	-	-	-	-	-	-	-	-	-	-	-	-	-	-	-	1001-10-01/02/11/12/88/89			
13 371-11-11		ROW	-	-	-	-	-	-	-	-	-	-	-	-	-	-	-	-	-	-	-	-	-	-	-	01 Design phased thru CY2021		
		UNTIL	-	-	-	-	-	-	-	-	-	-	-	-	-	-	-	-	-	-	-	-	-	-	-	-	02 Design obligated 2011 ongoing thru CY 2021	
		CONST	cont'd	-	-	-	-	cont'd	-	-	-	-	-	-	-	-	-	-	-	-	-	-	-	-	-	-	-	includes dynamic message sign
		TOTAL	-	-	-	-	-	-	-	-	-	-	-	-	-	-	-	-	-	-	-	-	-	-	-	-	-	Also in Beloit and Madison MPOs
Type	E	-	-	-	-	-	-	-	-	-	-	-	-	-	-	-	-	-	-	-	-	-	-	-	-	Programmed		
State of Wis.	I-39-90 IL stateline to CTH O South segment	PE	-	cont'd	-	-	-	cont'd	-	-	-	-	-	-	-	-	-	-	-	-	-	-	-	-	-	1003-10-01/21/22/23/24/25/27/29/40/41/42/43		
14 371-11-12		ROW	-	-	-	-	-	-	-	-	-	-	-	-	-	-	-	-	-	-	-	-	-	-	-	-	70/71/72/73/74/75/76/77/78/79/80/81/83/84	
		UNTIL	-	-	-	-	-	-	-	-	-	-	-	-	-	-	-	-	-	-	-	-	-	-	-	-	85/86/88/89/91/92/93/94/95/97	
		CONST	11,191	34,031	-	45,222	-	465	-	465	23,600	73,450	-	97,051	-	964	-	964	-	964	-	-	-	-	-	-	-	1003-11-20/21/22/23/70/90/91/92/94/95
		TOTAL	11,191	34,031	-	45,222	-	465	-	465	23,600	73,450	-	97,051	-	964	-	964	-	964	-	-	-	-	-	-	-	Project 1003-10-84 is funded using FHWA
Type	E	NHPP	WIS	-	-	-	WIS	-	-	NHPP	WIS	-	-	-	WIS	-	-	-	-	-	-	-	-	-	-	-	Fast Lane Grant up to 60% Fed Funding.	
State of Wis.	I-39/90 CTH O to Rock County Line Middle Segment	PE	-	cont'd	-	-	-	-	-	-	-	-	-	-	-	-	-	-	-	-	-	-	-	-	-	1005-10-01/21/22/24/25/26/40/42/43		
15 371-11-13		ROW	-	-	-	-	-	-	-	-	-	-	-	-	-	-	-	-	-	-	-	-	-	-	-	-	44/70/71/72/73/75/76/77/78/79/80/81/83/87/89	
		UNTIL	-	-	-	-	-	-	-	-	-	-	-	-	-	-	-	-	-	-	-	-	-	-	-	-	-	94/97/98/99 5390-00-72, 5569-00-71
		CONST	82,387	21,837	140	104,364	21,517	62,803	-	84,321	-	799	-	799	-	12,189	9	12,199	-	cont'd	-	-	-	-	-	-	-	1005-11-20/41/44/45/71/72/73/90
		TOTAL	82,387	21,837	140	104,364	21,517	62,803	-	84,321	-	799	-	799	-	12,189	9	12,199	-	-	-	-	-	-	-	-	-	Project 1005-10-76 is funded using FHWA
Type	E	NHPP	WIS	COJ	-	NHPP	WIS	-	-	-	WIS	-	-	-	WIS	COJ	-	-	-	-	-	-	-	-	-	-	Fast Lane Grant up to 60% Fed Funding.	
																												Programmed

2022 - 2023 are considered the out years of the TIP and are therefore NOT PROGRAMMED.

**TABLE 1 - JANESVILLE AREA MPO  
TIP Project listing 2018-2023**

(\$1,000)

Funding shown in year of expenditure; 1.8% inflation added per year

Jurisdiction/Sponsor RC = Rock County COJ = Janesville COM = City of Milton	Project Description Cap Exp = E Sys Pres = P	Type of Cost	January - December 2018				January - December 2019				January - December 2020				January - December 2021				January - December 2022 - 2023				Comments
			Fed	State	Local	Total	Fed	State	Local	Total	Fed	State	Local	Total	Fed	State	Local	Total	Fed	State	Local	Total	
<b>Roadway</b>																							
State of Wis. 16 371-14-011	Elm St Safety OCR signals & gates 392360D	PE	-	-	-	-	-	-	-	-	-	-	-	-	-	-	-	-	-	-	-	-	1009-91-82 obligated in 2014 0 construction anticipated to be completed in 2018 0 Programmed
		ROW	-	-	-	-	-	-	-	-	-	-	-	-	-	-	-	-	-	-	-	-	
		UTIL	-	-	-	-	-	-	-	-	-	-	-	-	-	-	-	-	-	-	-	-	
		CONST	-	cont'd	-	-	-	-	-	-	-	-	-	-	-	-	-	-	-	-	-	-	
		TOTAL	-	-	-	-	-	-	-	-	-	-	-	-	-	-	-	-	-	-	-	-	
Type	P																						
State of Wis. 17 371-14-010	E. Vincent St. Safety OCR signals & gates 911323L	PE	-	-	-	-	-	-	-	-	-	-	-	-	-	-	-	-	-	-	-	-	1009-91-81 obligated in 2014 0 construction anticipated to be completed in 2018 0 Programmed
		ROW	-	-	-	-	-	-	-	-	-	-	-	-	-	-	-	-	-	-	-	-	
		UTIL	-	-	-	-	-	-	-	-	-	-	-	-	-	-	-	-	-	-	-	-	
		CONST	-	cont'd	-	-	-	-	-	-	-	-	-	-	-	-	-	-	-	-	-	-	
		TOTAL	-	-	-	-	-	-	-	-	-	-	-	-	-	-	-	-	-	-	-	-	
Type	P																						
State of Wis. 18 371-14-008	EMH Townline Rd Safety OCR signals & gates 392363Y	PE	-	-	-	-	-	-	-	-	-	-	-	-	-	-	-	-	-	-	-	-	1009-91-78 obligated in 2014 construction anticipated to be completed in 2018 0 Programmed
		ROW	-	-	-	-	-	-	-	-	-	-	-	-	-	-	-	-	-	-	-	-	
		UTIL	-	-	-	-	-	-	-	-	-	-	-	-	-	-	-	-	-	-	-	-	
		CONST	-	cont'd	-	-	-	-	-	-	-	-	-	-	-	-	-	-	-	-	-	-	
		TOTAL	-	-	-	-	-	-	-	-	-	-	-	-	-	-	-	-	-	-	-	-	
Type	P																						
State of Wis. 19 371-14-009	Vincent St. Safety OCR signals & gates 391639H	PE	-	-	-	-	-	-	-	-	-	-	-	-	-	-	-	-	-	-	-	-	1009-91-80 obligated in 2014 0 construction anticipated to be completed in 2018 0 Programmed
		ROW	-	-	-	-	-	-	-	-	-	-	-	-	-	-	-	-	-	-	-	-	
		UTIL	-	-	-	-	-	-	-	-	-	-	-	-	-	-	-	-	-	-	-	-	
		CONST	-	cont'd	-	-	-	-	-	-	-	-	-	-	-	-	-	-	-	-	-	-	
		TOTAL	-	-	-	-	-	-	-	-	-	-	-	-	-	-	-	-	-	-	-	-	
Type	P																						
State of Wis. 20 371-11-005	USH 51 & Union Pacific crossing upgrade 177418U	PE	-	-	-	-	-	-	-	-	-	-	-	-	-	-	-	-	-	-	-	-	5350-01-50 obligated in 2011 W. Court, W. Milwaukee, Madison 0 construction anticipated to be completed in 2018 Programmed
		ROW	-	-	-	-	-	-	-	-	-	-	-	-	-	-	-	-	-	-	-	-	
		UTIL	-	-	-	-	-	-	-	-	-	-	-	-	-	-	-	-	-	-	-	-	
		CONST	-	cont'd	-	-	-	-	-	-	-	-	-	-	-	-	-	-	-	-	-	-	
		TOTAL	-	-	-	-	-	-	-	-	-	-	-	-	-	-	-	-	-	-	-	-	
Type	P																						

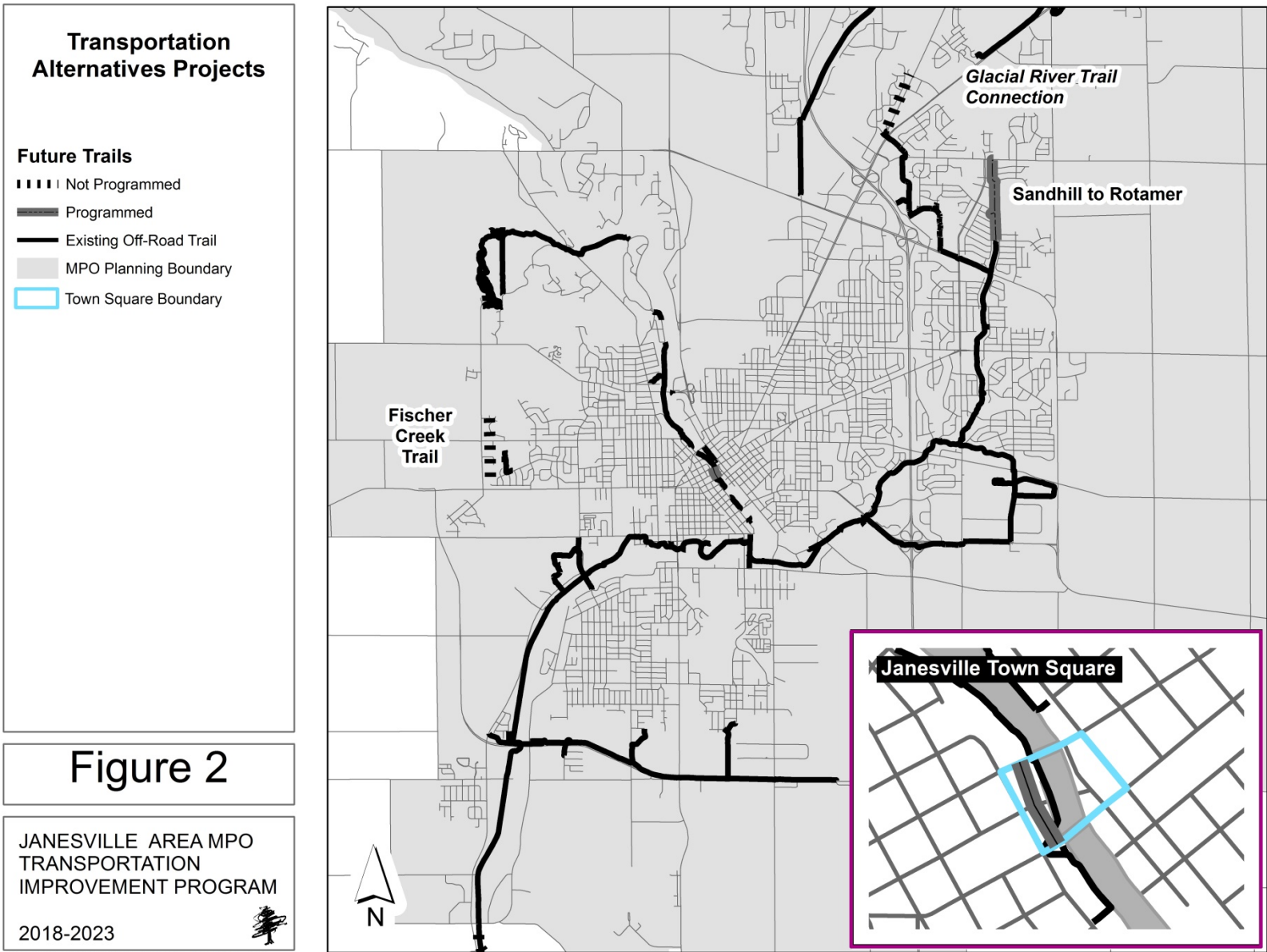
2022 - 2023 are considered the out years of the TIP and are therefore NOT PROGRAMMED.



Funded Fixed Route Transit:

		Funding shown in year of expenditure																				
Jurisdiction/Sponsor	Project Description	January - December 2018				January - December 2019				January - December 2020				January - December 2021				January - December 2022 - 2023				Comments
RC = Rock County	Cap Exp = E																					
COJ = Janesville	Sys Pres = P																					
COM = City of Milton	Type of Cost																					
		Fed	State	Local	Total	Fed	State	Local	Total	Fed	State	Local	Total	Fed	State	Local	Total	Fed	State	Local	Total	
<b>Transit Projects</b>																						
C. Janesville	Janesville Transit	Oper Asst	1071	875	1014																	Local share of commuter services provided by regional sponsors
371-18-T01	System Operations	Paratran		35																		
		Sponsors			97																	
		Revenue			517																	
		Misc			40																	
		TOTAL	1071	910	1668	3649																
			Sec. 5307	Sec. 85.20	COJ																	Programmed

Figure 2: Funded Transportation Alternatives Projects



Funded Transportation Alternatives:

TABLE 1 - JANE SVILLE AREA MPO  
TIP Project Listing 2018-2023

(\$1,000)

Funding shown in year of expenditure; 2.3% inflation added per year

Jurisdiction/Sponsor	Project Description	Type of Cost	January - December 2018				January - December 2019				January - December 2020				January - December 2021				Comments	
			Fed	State	Local	Total	Fed	State	Local	Total	Fed	State	Local	Total	Fed	State	Local	Total		
<b>Transportation Alternatives</b>																				
C. Janesville	Town Square West Rivervalk: Milwaukee to Court	PE			60	60													5990-01-22/23/26	
		ROW																		
1		UTIL																		Design obligated 2017
371-17-002		CONST	524		200	724														\$60,000 design COJ funding
		TOTAL	524		260	784														0
	Type P		STPBG-TAP	COJ															Programmed	
C. Janesville	NE Regional Trail Extension Sandhill Drive to Rotamer Rd.	PE	56		24	80													5990-01-24/25	
		ROW																		
2		UTIL																		Design obligated in 2017
371-17-003		CONST								352		88	440							\$56,000 Design Federal Funding
		TOTAL	56		24	80				352		88	440							
	Type E		STPBG-TAP	COJ					STPBG-TAP		COJ								Programmed	

## CHAPTER 3 - DESCRIPTION OF ILLUSTRATIVE ROADWAY PROJECTS, 2018-2023

This chapter presents unfunded roadway projects that could advance from illustrative to programmed if funding were available. Roadway needs are far greater than funding available at the federal, state, or local level. Below lists roadway projects that do not have committed funding. Federal and State funding codes are the suggested or probable funding sources for these projects, and do not represent funding commitment.

Potential **Surface Transportation Program** Block Grant- Urban Projects:

E. Milwaukee – Main to Atwood

W. Court Street – Centerway to Sunset

## **CHAPTER 4 - DESCRIPTION OF ILLUSTRATIVE TRANSIT PROJECTS AND FUNDING, 2018-2023**

### **FUNDING AVAILABILITY**

Funding for transit projects in the Janesville urbanized area is available from federal, state and local sources. The Janesville urbanized area receives operating and capital assistance under Section 5307 of the Federal Transit Act. Over the 6-year TIP period, it is anticipated that \$6,000,000 in operating assistance funds will be available. Section 5307 operating and capital funds are received and distributed by WisDOT to the 14 eligible urban areas with populations between 50,000 and 200,000. The total federal share of transit operating projects in the transit element of the TIP does not exceed the apportioned Section 5307 funds available to the urbanized area. Capital projects are proposed to be funded primarily by Section 5309 funds, with some backfill from Section 5307.

WisDOT provides transit operating assistance to urbanized areas through Section 85.20 of the Wisconsin Statutes. JTS can recover a portion of the total transit system operating costs through this program. This program does not provide a statutory percentage of expense coverage. The program has historically covered 25% of expenses; however, recent legislative action has lowered the percentage to 20-21%. The remaining transit operating and capital costs are covered by user fees (operating revenue) and local assistance (City of Janesville General Fund, which may be supported by bonding for major capital projects).

Major Capital projects are typically funded by Section 5339 federal discretionary capital funds, administered by WisDOT. Bus replacements may also be funded through Urban Surface Transportation Program if programmed street projects fall behind schedule. The normal annual funding amount is dependent upon the political process, making the annual amount variable. Should funding run out in a given year, projects are

reprogrammed to later years. WisDOT's policy states that bus replacements have first priority for capital funding should a funding shortfall occur. Section 5339 funds and STP funds have a 20% local share, which the City of Janesville pays for through general fund revenues or bonding.

In 2018, General obligation note issue funds are requested for the installation of a replacement roof at the Transfer Center (\$155,000); and the implementation of an announcement system for audible and visual notification of bus stops for passengers, along with a real time bus locator app (\$277,650). In addition, JTS has submitted a competitive FTA grant request for the purchase of five transit buses; if awarded, the local share would be \$500,000 and the federal share would be \$2,000,000.

Further, JTS anticipates applying for grant funds for additional buses in late 2018 using the FTA formulary program and/or the proposed statewide transit capital assistance program. The maximum local share would be \$500,000 and the federal or state share would be \$2,000,000. The grant programs utilized and number of buses for application will be determined upon hearing the outcome of the pending competitive FTA grant request.

### **TRANSIT SERVICE**

The Janesville Transit System operating assistance projects included in this TIP are level from the previous year. Currently JTS operates five in city daytime routes. These routes operate on Monday – Friday, from 6:15 AM – 6:15 PM and 8:45 AM to 6:15 PM on Saturdays. JTS also operates three night service routes that run Monday – Friday from 6:15 PM – 10:15 PM. In addition, the Beloit-Janesville Express operates 6:00 AM – 6:15 PM Monday – Friday, which is jointly operated by the Beloit Transit System.

Private transportation providers are contacted when transit service is restructured or changed. Appendix B contains a summary of the private enterprise participation process utilized to inform and involve private

transportation providers in the transportation planning and programming process.

#### ELDERLY AND DISABLED SERVICES (Janesville Transit System)

The Janesville Transit System (JTS) route structure is designed to serve all major elderly and handicapped generators. The JTS fleet consists of 17 buses, 15 of which operate during peak and off-peak hours over the regular routes. The remaining buses are used to provide peak hour tripper, Beloit-BTC-Janesville and evening service. All of the buses are equipped with wheelchair lifts or ramps and wheelchair tie down positions. All buses have kneeling devices, which allows JTS to meet U.S. Department of Transportation "504" and ADA Regulations. Accessible bus service is provided on all headways.

A contract with an existing service provider, Rock County Specialized Transit (RCST), provides paratransit service that complements the Janesville Transit System. RCST is a county government agency that provides transportation within the JTS service area as well as the rest of Rock County. JTS provides regular fixed-route service outside the normal operating hours of RCST in the early morning, late afternoon and on Saturday. In order to meet the requirement for complementary paratransit service, RCST provides service during these same time periods. Paratransit service is available during the same hours as fixed-route service is available in the JTS service area.

## CHAPTER 5 - DESCRIPTION OF TRANSPORTATION ALTERNATIVES PROGRAM AND LIST OF ILLUSTRATIVE PROJECTS, 2018-2023

This chapter presents unfunded bicycle/pedestrian transportation project needs. Figure 2 includes projects from the Janesville Area Long Range Transportation Plan, and Transportation Alternatives applications. Table 4 presents the near term trail priorities in which MPO jurisdictions are actively seeking funding.

WisDOT acts as a coordinator to provide information about the Alternatives Program to local units of government, interest groups and private individuals. The MPO collects any alternatives projects eligible for federal funding and incorporates them into the TIP. Up to 80% of total project costs can be funded with federal dollars. The remaining percentage of the project is funded by the public sponsor or local sponsor.

TABLE 4 - JANESVILLE AREA MPO																								
TIP Project listing 2018-2023																								
(\$1,000)																								
Funding shown in year of expenditure; 2.3% inflation added per year																								
Jurisdiction/Sponsor RC = Rock County COJ = Janesville COM = City of Milton	Project Description Cap Exp = E Sys Pres = P	Type of Cost	January - December 2018				January - December 2019				January - December 2020				January - December 2021				January - December 2022 - 2023				Comments	
			Fed	State	Local	Total	Fed	State	Local	Total	Fed	State	Local	Total	Fed	State	Local	Total	Fed	State	Local	Total		
<b>Transportation Enhancements</b>																								
C. Janesville	Fischer Creek Trail: West Court to Dartmouth Dr.	PE ROW UTIL CONST					37		9	46														*Illustrative
1											248		62	310										
		TOTAL					37		9	46	248		62	310										
Type	E						STPBG-TAP		COJ		STPBG-TAP		COJ											Not Programmed
C. Janesville	Glacial River trail connection: STH 26 ped overpass to McCormick	PE ROW UTIL CONST									93		23	116										*Illustrative
2															618		154	772						
		TOTAL									93		23	116	618		154	772						
Type	E						STPBG-TAP		COJ		STPBG-TAP		COJ		STPBG-TAP		COJ							Not Programmed





## **CHAPTER 6 - DESCRIPTION OF ELDERLY AND DISABLED TRANSPORTATION PROJECTS, 2018-2023**

This chapter is set aside to list the project submittals from public and private non-profit transit providers within the Janesville Urbanized Area that intend to pursue federal and/or state funding for the provision of transportation for the elderly and disabled. Project submittals are usually in the form of requests for handicap accessible buses or vans. Projects are listed in Table 5.

### **ELDERLY AND HANDICAPPED (E/H) SPECIAL EFFORT SERVICES**

Currently there are at least half a dozen public and private organizations that provide transportation to the elderly and handicapped in Janesville. Van Galder Bus/Coach USA is the only private for-profit organization. The public and private non-profit organizations include: Rock County Health Care Center, Rock County Council on Aging (Specialized Transit Division), Rock County Social Services (Driver Escort Program), Lutheran Social Services, Community Action, and the Janesville Transit System. Of these organizations, only the Janesville Transit System, and the Rock County Council on Aging anticipates using federal DOT or WisDOT funding in the 2018-2023 TIP.

### ROCK COUNTY SPECIALIZED TRANSIT

Rock County Specialized Transit (RCST), a division of Rock County Council on Aging, has contracted with JTS to provide complementary Paratransit service for the Janesville service area.

*Table 2: Elderly and Disabled Transportation*

**TABLE 2 - JANESVILLE AREA TRANSPORTATION STUDY**

**TIP Project listing 2018-2023**

(\$1,000)

Funding shown in year of expenditure

Jurisdiction/Sponsor RC = Rock County COJ = Janesville COM = City of Milton	Project Description Cap Exp = E Sys Pres = P	Type of Cost	January - December 2018				January - December 2019				January - December 2020				January - December 2021				Comments
			Fed	State	Local	Total	Fed	State	Local	Total	Fed	State	Local	Total	Fed	State	Local	Total	
<b>Elderly, Disabled, &amp; Other Non-fixed Route Transit Projects</b>																			
Rock County 371-18-01ED	Mobility Management - assist and advocate for transportation disadvantaged population																		
Type		TOTAL	110		19	95													
			Sec. 5310		RC														Programmed
Rock County 371-18-02ED	Rock County transit vehicle replacement, replacement of 3 vehicles																		
Type		TOTAL	142		35	177													
			Sec. 5310		RC														Programmed
Forward Services Corp 371-17-02ED	Vanpool																		
Type		TOTAL	2		46	48													
			Sec. 5311		private														Programmed

## CHAPTER 7 - TIP FINANCIAL PLAN AND IMPLEMENTATION STATUS REPORT

### Financial Plan

Table 3 demonstrates the ability of available funding sources to implement the projects programmed in the TIP. Programmed expenditures in the TIP have been compared to the funding estimated to be available, federal, state and local. Included are federal highway and federal transit funding sources. The MPO was only given estimated available funding levels for the FHWA STP-Urban program. In the event of over programming of funds, technical advisory committees at the state and local levels will work to resolve the discrepancy. This may involve the use of alternative funding sources from federal or state funds, or reprogramming projects to alternate years when funding will be available.

### Operations and Maintenance Funds

Any costs associated with providing street Maintenance and Operations (O&M) activities are funded entirely by the local operating budgets of the various jurisdictions within the Janesville MPO. These O&M funds are completely separate from the capital improvement funds provided for in the TIP and do not affect the cost estimates and corresponding fiscal constraints shown in this document.

*Table 3: Fiscal Constraint Summary*  
**TABLE 3 - JANESVILLE AREA MPO**  
**Funding Summary for 2018-2023 TIP**  
**Fiscally Constrained 2018-2021**

(\$1,000)

Funding Source		Programmed Expenditures					Estimated Available Funding				
Agency	Program	2018	2019	2020	2021	Total	2018	2019	2020	2021	Total
Federal Highway Administration	National Highway System (NHPP)	\$94,272	\$25,721	\$23,600	\$0	\$143,593	\$94,272	\$25,721	\$23,600	\$0	\$143,593
	Interstate Maintenance (IM)	\$0	\$0	\$0	\$0	\$0	\$0	\$0	\$0	\$0	\$0
	STPBG- Urban (STPBG-U)	\$0	\$1,986	\$955	\$0	\$2,941	\$0	\$1,986	\$955	\$0	\$2,941
	STPBG- Bridge (STPBG-BR)	\$3,126	\$287	\$0	\$0	\$3,413	\$3,126	\$287	\$0	\$0	\$3,413
	STP - State Flexibility (FLX)	\$0	\$0	\$0	\$0	\$0	\$0	\$0	\$0	\$0	\$0
	STP - Safety (SAF)	\$0	\$0	\$0	\$0	\$0	\$0	\$0	\$0	\$0	\$0
	STP - Discretionary (STP-D)	\$0	\$0	\$0	\$0	\$0	\$0	\$0	\$0	\$0	\$0
	STPBG - TAP	\$580	\$0	\$0	\$0	\$580	\$580	\$0	\$0	\$0	\$580
	Highway Safety Improvement Program (HSIP)	\$0	\$0	\$0	\$0	\$0	\$0	\$0	\$0	\$0	\$0
	<b>Total</b>		<b>\$97,978</b>	<b>\$27,994</b>	<b>\$24,555</b>	<b>\$0</b>	<b>\$150,527</b>	<b>\$97,978</b>	<b>\$27,994</b>	<b>\$24,555</b>	<b>\$0</b>
Federal Transit Administration	Sec. 5307 - Operating or Capital Assistance	\$1,070	\$0	\$0	\$0	\$1,070	\$1,070	\$0	\$0	\$0	\$1,070
	Sec. 5339 - Capital**	\$0	\$0	\$0	\$0	\$0	\$0	\$0	\$0	\$0	\$0
	STPBG-Urban (STPBG-U)	\$0	\$0	\$0	\$0	\$0	\$0	\$0	\$0	\$0	\$0
	Section 5311 - Job Access	\$2	\$0	\$0	\$0	\$2	\$2	\$0	\$0	\$0	\$2
	Section 5310 - Capital Assistance Program for Elderly & Disabled Riders	\$252	\$0	\$0	\$0	\$252	\$252	\$0	\$0	\$0	\$252
<b>Total</b>		<b>\$1,324</b>	<b>\$0</b>	<b>\$0</b>	<b>\$0</b>	<b>\$1,324</b>	<b>\$1,324</b>	<b>\$0</b>	<b>\$0</b>	<b>\$0</b>	<b>\$1,324</b>

## Implementation Status

Table 4 lists major transportation projects from the previous TIP that are currently underway, completed, redefined, deferred or have been dropped. A brief project description is given along with the agency responsible for project implementation.

**TABLE 4 - JANESVILLE AREA METROPOLITAN PLANNING ORGANIZATION: Major Project Implementation Status**

Status of Project/ Year of Completion	Current and Completed Projects	Implementing Agency
COMPLETED	Sharon Road Bridge Reconstruction	City of Janesville
COMPLETED	Austin Road Reconstruction: CTH B/W. Court to Mineral Point	City of Janesville
COMPLETED	E. Milwaukee St: N. Sumac to Wright	City of Janesville
COMPLETED	Second Lane: Madison to Vernal	City of Milton
CONTINUING/2018	Town Square Riverwalk	City of Janesville
CONTINUING/2018	NE Regional Trail Extension	City of Janesville
CONTINUING/2018	Milwaukee Street Reconstruction: River to Locust	City of Janesville
CONTINUING/2018	Milwaukee Street Bridge Replacement	City of Janesville
CONTINUING/2018	Ruger Ave. Reconstruction: Wright Rd. to USH 14	Rock County/City of Janesville
CONTINUING/2018	Fischer Creek Bridge	Rock County/JVL Township
CONTINUING/2018	USH 51 and Union Pacific RR crossing upgrade	State of Wisconsin
CONTINUING/2018	Vincent St. railroad crossing OCR signals & gates	State of Wisconsin
CONTINUING/2018	E. Vincent St. railroad crossing OCR signals & gates	State of Wisconsin
CONTINUING/2018	Elm St. railroad crossing OCR signals & gates	State of Wisconsin
CONTINUING/2018	USH 14: CTH M to USH 51 mill and overlay	State of Wisconsin
CONTINUING/2018	USH 14: Lexington to Pontiac Reconstruct to urban; mill and overlay pavement	State of Wisconsin
CONTINUING/2018	I-39/90 Illinois State Line to USH 12/18 Program Control	State of Wisconsin
CONTINUING/2018	I-39/90 Illinois state line to CTHO: Reconstruction from 4 to 6 lanes	State of Wisconsin
CONTINUING/2018	I-39/90 CTH O to Rock County line: Reconstruction from 4 to 6 lanes	State of Wisconsin
REMOVED	USH 14 Four Mile Bridge Replacement	State of Wisconsin
Year of Completion	Projects Added During 2017 and New Projects	Implementing Agency
ADDED 2017/CONTINUING 2018	Job related vanpool	Private
ADDED 2016 /CONTINUING 2018	Main Street Rehabilitation: St. Lawrence to E. Racine	City of Janesville
ADDED 2016 /CONTINUING 2018	Ruger Ave. Rehabilitation: Court to Lexington (split into 2 phases)	City of Janesville
ADDED 2016 /CONTINUING 2018	E. Milwaukee Reconstruction: Main to Atwood	City of Janesville
ADDED 2016 /CONTINUING 2018	Center Ave (STH 51) Rehabilitation: Nicolet to Court	State of Wisconsin

## CHAPTER 8 - ENVIRONMENTAL JUSTICE IN THE TRANSPORTATION IMPROVEMENT PROGRAM

This chapter is included to fulfill the 1994 Presidential Executive Order 12898, *Federal Actions to Address Environmental Justice in Minority Populations and Low-Income Populations*. This order accompanied by Title VI of the 1964 Civil Rights Act attempts to identify, avoid, and minimize disproportionately harmful or hazardous health and environmental effects on low-income and minority populations. More specifically, the US DOT and FHWA identify three fundamental environmental justice principles:

- To avoid, minimize, or mitigate disproportionately high and adverse human health and environmental effects, including social economic effects, on minority populations and low-income populations.
- To ensure the full and fair participation by all potentially affected communities in the transportation decision-making process.
- To prevent the denial of, reduction in, or significant delay in the receipt of benefits by minority and low-income populations.

Figures 3 and 4 illustrate the census tracts with higher than average low income or minority populations. 2011-2015 American Community Survey Census race by tract data is available and therefore used in the analysis. 2011-2015 American Community Survey data is also the most recent year of available data for poverty.

For the purpose of this analysis, the MPO considers a Census tract to be concentrated if the population is one standard deviation greater than the MPO mean. For poverty, an average of 7.5% of the population within the MPO is below the poverty level. One standard deviation from the poverty mean is 5.5, therefore Census tracts with greater than 13% poverty are considered concentrated. Areas are considered to have a concentration of minorities if 10% or more individuals identify as a minority.

### Roadway Projects and Low Income/ Minority Populations

Roadway projects affecting census tracts with higher than average minority and low income populations are shown in Figure 3. The following projects in Figure 3 are within or along the boundary of tracts both with higher than average minority and low income populations: Project #1, West Milwaukee Street Reconstruction; project #2, Milwaukee Street Bridge reconstruction; project #3, Main Street Rehabilitation #5, Ruger Avenue; project #10, STH 51 Rehabilitation; project #11, USH 14 reconstruction from Lexington to Pontiac; project #12, USH 14 M to 51 resurfacing; project #14 & #15, I-39/90 expansion; project #20, USH 51 and Union Pacific RR crossing.

The reconstruction and expansion of Interstate 39/90 has the potential to negatively affect low income and minority populations. Minority populations live near I-39/90 south of the STH 11 interchange to the state line, and between Milwaukee Street and STH 26. Minorities may be adversely affected by projects #14 and #15 (expansion) in particular. Project impacts were evaluated in greater detail and addressed in the project environmental assessment.

All other projects are reconstruction without expansion or resurfacing projects that are expected to improve the quality and safety of the existing road system.

### **Transportation Alternatives Projects and Low Income/ Minority Populations**

The existing and planned transportation enhancement projects are well dispersed throughout the urban area, as shown in Figure 4. The majority of the environmental justice target areas are located within a ½ mile of a bike/pedestrian trail.

### **TIP Projects and Direct and Indirect Impacts on Low Income/ Minority Populations**

Taken in whole, the projects in the Janesville Area 2018-2023 Transportation Improvement Program, together with the other public and privately funded transportation improvements and services provided in the

Janesville urbanized area, do not impose disproportionately high and adverse impacts on minority populations and/or low income population. Furthermore, the benefits of the transportation services and improvements proposed are reasonably distributed to serve the mobility and accessibility needs of all population groups within the Janesville Area MPO. These statements are based on the analysis of proposed projects, their locations, and impacts on both low income and minority populations as summarized in Chapter 7 of this document.

### **Public Involvement of Low Income/ Minority Populations**

Attempts to involve low income and minority populations in the creation of the TIP can be found in Chapter 9, *PUBLIC PARTICIPATION*, of this document.

Figure 3: Environmental Justice Roadway Projects

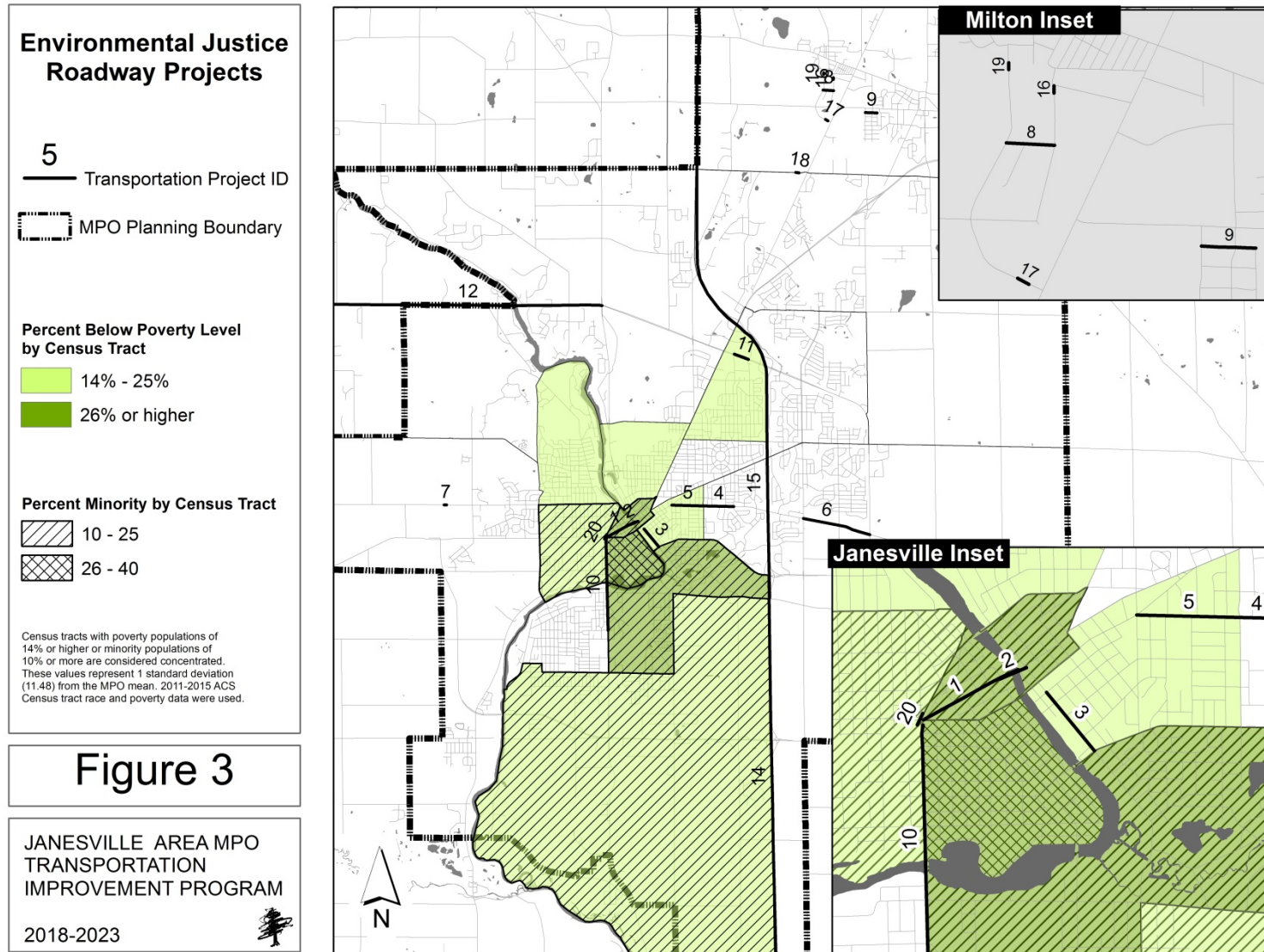
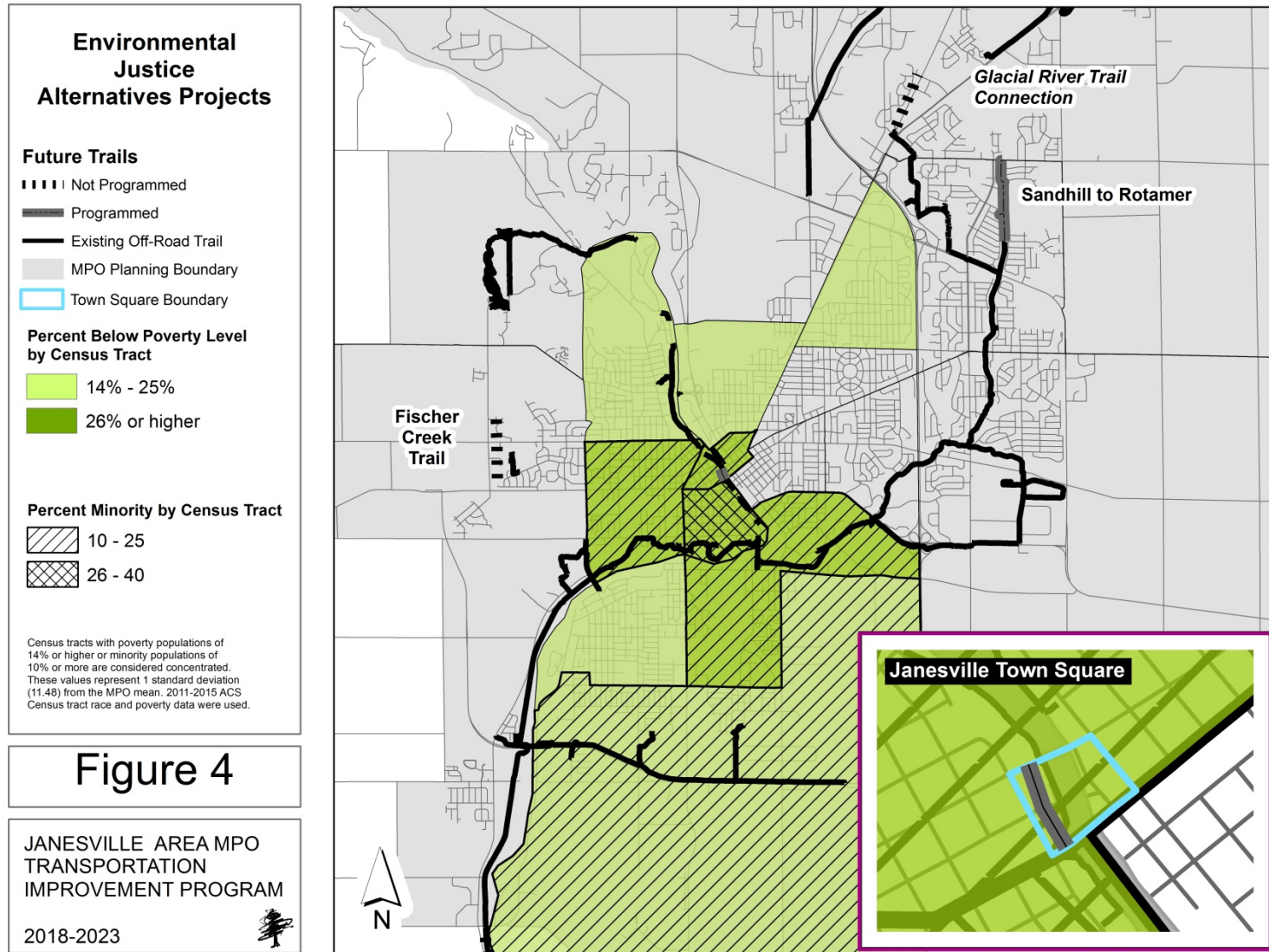




Figure 4: Environmental Justice Transportation Alternatives Projects



S:\Projects\MPO\TIP\2015\TIP2016\Fig2\_4.mxd; 8/21/2015

## CHAPTER 9 – PUBLIC PARTICIPATION IN THE TRANSPORTATION IMPROVEMENT PROGRAM

The TIP is prepared as a cooperative effort by the MPOs, the Wisconsin Department of Transportation, transit operators and the local agencies that implement transportation projects. The document is primarily based the Janesville Area MPO Long-Range Transportation Plan. Public involvement procedures for the TIP are described in three stages identified below. Detailed procedures are outlined in the Janesville Area MPO's *Public Participation Plan* (2012).

*WisDOT relies on the public involvement process conducted by the MPO in the development of the TIP, to satisfy the Federal Transit Administration program and planning requirements, as established for the Section 5307/5309 programs.*

### TIP Development Process

#### Stage 1 - Requests For Projects

- Requests for projects to be included in the TIP are solicited from all units of government in the Janesville Planning Area (City of Janesville, City of Milton, Towns of Harmony, Janesville, LaPrairie, Rock, and Milton and Rock County) plus the State of Wisconsin. Public and private transportation providers, including those that provide transportation to the elderly and handicapped, are also eligible to submit capital acquisition projects. Inclusion of projects in the TIP is based on funding availability and compliance with short and long range plans for the metropolitan planning area.
- The submittals initiate the public involvement process and provide opportunity for input into the TIP.
- A legal notice is printed in the local newspaper announcing the development of the TIP to the general public. Individuals are afforded the opportunity to contact the MPO to learn more about the TIP and provide any comments on the process.

The MPO will document all public comments prior to the development of the TIP.

#### Stage 2 - Draft TIP Review

The draft TIP is developed by the MPO staff after receiving project proposals to be included in the document. The TIP summarizes highway, public transportation and other modes of public transportation projects, including capital acquisition, that are scheduled over the next six years.

- The Draft TIP is sent to all members of the MPO Technical Advisory Committee plus all other transportation providers (both public and private) in the metropolitan area.
- The MPO Technical Advisory Committee meets to discuss the projects that have been included in the draft TIP. Additions or deletions to the list are suggested at this time. The general public is invited to attend this open meeting with a notice published in the local newspaper that serves the MPO planning area.
- Copies of the Draft TIP are available for public review at the local libraries, JTS, and the MPO office at City Hall (Public Works Department). The Draft TIP is posted on the MPO webpage. Oral and written comments on the Draft TIP are taken by the MPO and documented prior to the development of the Final TIP.

### Stage 3 - Final TIP Distribution

The final TIP is submitted to FHWA, FTA, WisDOT, and other local levels of government in the MPO planning area after no further significant changes are made to the draft TIP. The MPO Policy Board determines final approval of the TIP.

- Any significant additions or deletions to the TIP require a further review and public comment period. The shifting of projects between years within the TIP does not dictate additional public review and comment. Major amendments to the TIP are published in the local newspaper serving the MPO planning area.
- Copies of the Final TIP are available for public review at the local libraries and also at the MPO office at City Hall (Planning Services Department). The Final TIP is posted on the MPO webpage.

The MPO will, if requested by a number of organizations and individuals, hold a separate public information meeting or public hearing to present an overview of the TIP. Individuals would have the opportunity to speak with MPO staff and make any comments concerning the document. Individuals may make oral comments, provide written comments or contact the MPO staff at the appropriate address.

The site for a meeting or hearing will be of adequate size for the audience, accessible to persons with disabilities, located on or convenient to public transportation routes and provide adequate parking. A time would be chosen so that a maximum number of people could attend. Meetings will be scheduled so that persons who must rely on public or specialized transit can attend and still return home during the hours of operation of those systems, and also accommodate those persons who work both during the day and in the evening. A sign language interpreter for hearing impaired persons will be provided upon request or when the nature of the meeting is such that attendance by hearing impaired persons is anticipated. Staff will provide assistance in describing exhibits or providing information in alternative formats upon request by visually impaired persons or those with other disabilities.

### **Public Notice**

Stage 1 - Public notice of TIP development was published in the Janesville Gazette on July 31, 2017. The notice stated that upon completion of the draft TIP another public notice would be published stating where the document could be reviewed for general public comment. (Exhibit A)

Stage 2 - Public notice of draft TIP review by the TAC was published in the Janesville Gazette on September 25, 2017 (Exhibit B). Public notice of the TIP review & approval by the Policy Board was published in the Janesville Gazette on November 22, 2017. (Exhibit C).

Final copies of the TIP may be obtained in the Public Works Department, located at Janesville City Hall, or on the City of Janesville's MPO webpage: <http://www.ci.janesville.wi.us/government/public-meeting-materials-videos>

### PUBLIC COMMENT

None

### **Submit comments to:**

Janesville Area MPO – Planning Services Division  
18 North Jackson St. Janesville, WI 53545  
Phone: (608) 755-3095  
FAX: (608) 755-3196  
E-mail: [planning@ci.janesville.wi.us](mailto:planning@ci.janesville.wi.us)

## EXHIBIT A

### PUBLIC NOTICE

The Janesville Area MPO is now in the development stage of the 2018-2023 Transportation Improvement Program (TIP). The TIP is an annual report that identifies and schedules major highway improvements, public transit projects, and bicycle/pedestrian projects over a six-year period. Units of government surrounding Janesville, agencies involved in transportation planning, and local private providers of transportation are requested to submit a list and description of projects for inclusion in the TIP. Transportation projects that propose to use federal or state funds must be included in the TIP to receive project approval. Upon completion of the draft TIP, another public notice will be published stating where the document can be reviewed, and a public meeting will be scheduled. Public notice of public involvement activities and time established for public review and comments on the Transportation Improvement Program will satisfy the Program Of Projects requirements for transit. Any questions related to the preparation and content of the TIP should be directed to the City of Janesville Planning Services Division TELEPHONE: (608) 755-3085, FAX (608) 755-3196, EMAIL: [planning@ci.janesville.wi.us](mailto:planning@ci.janesville.wi.us)

Publish: July 31, 2017

EXHIBIT B

**PUBLIC NOTICE**

The Janesville Area Metropolitan Planning Organization (MPO) will be conducting a meeting of the MPO Technical Advisory Committee on October 3, 2017 at 10:00am in room 416 of Janesville City Hall. Items on the agenda include: review of updates to the Public Participation Plan, 2018 Unified Work Program, 2018-2023 Transportation Improvement Program, and 2017 Transit Development Plan.

The documents being presented to the Technical Advisory Committee are available for public review in the Public Works Department, 18 North Jackson Street, Janesville, between 7:30 & 4:30 p.m., Monday – Friday, at the Hedberg and Milton libraries, and on the MPO's web page, [www.ci.janesville.wi.us/mpo](http://www.ci.janesville.wi.us/mpo).

For information on the meeting or to receive an agenda, please contact the Planning Services Division at 755-3085, FAX 755-3196 or email [barnett@ci.janesville.wi.us](mailto:barnett@ci.janesville.wi.us). The meeting will be held on October 3, 2017 in Room 416 of Janesville City Hall, 18 N. Jackson Street, Janesville, WI at 10:00am.

Publish once: Monday, September 25, 2017

## EXHIBIT C

### Public Notice

The Janesville Area Metropolitan Planning Organization (MPO) will be conducting a meeting of the MPO Policy Board at 5:30pm on November 29, 2017 in Room 417 of Janesville City Hall. Items on the agenda include: approval of updates to the Public Participation Plan, 2018 Unified Work Program, 2018-2023 Transportation Improvement Program, and 2017 Transit Development Plan.

The documents being presented to the Policy Board are available for public review in the Planning Services Division, Janesville City Hall, 18 North Jackson Street, Janesville, between 7:30 a.m. & 4:30 p.m., Monday – Friday, at the Hedberg and Milton libraries, and on the City of Janesville’s web page, [www.ci.janesville.wi.us](http://www.ci.janesville.wi.us).

For information on the meeting or to receive an agenda, please contact the Planning Services Division at 755-3085, FAX 755-3196 or email [barnett@ci.janesville.wi.us](mailto:barnett@ci.janesville.wi.us). The meeting will be held on Wednesday, November 29, 2017 in Room 416 of Janesville City Hall, 18 N. Jackson Street at 5:30pm.

Publish Once: November 22, 2017

## **APPENDIX A - COMMENTS FROM PRIVATE MASS TRANSPORTATION PROVIDERS**

During 2018-2023 Transportation Improvement Program update, MPO staff contacted the following private mass transportation providers:

Van Galder Bus Company  
715 South Pearl Street  
Janesville, WI 53545  
608- 752-5407

John Kramer, COO  
DRS Medical Transport  
409 Hallberg Street  
PO Box 371  
Delavan, WI 53115  
262-728-9759

Diane Morea  
Riteway Bus Service, Inc.  
1021 Storrs Lake Rd  
Milton, WI 53563

Eugene R. Kaye  
Call Me a Cab  
410 Bluff St.  
Beloit, WI 53511

Karl Schulte  
Brown Cab Services, Inc.  
PO Box 66  
Fort Atkinson, WI 53538

Michael McComb  
Mr. Enterprise Taxi  
PO Box 1224  
Janesville, WI 53547

Patrick Bare  
Park City Taxi  
1605 E. Memorial Dr.  
Janesville, WI 53545

Demetrius Jones  
You Buy We Fly, LLC  
2019 Wisconsin Ave  
Beloit, Wisconsin 53511

Patti Heitz  
Lavigne Bus Company  
N3019 US Highway 12  
Fort Atkinson, WI 53538-9105

D.R. Medical Rides  
211 Kings Lynn Road  
Stoughton, WI 53589

Pamrjit Carr  
Hailey Transport  
312 S 7th Street  
Delavan, WI 53115

The public and private not-for-profit transportation providers contacted during the TIP process are listed below:

Joyce Lubben  
Rock County Council on Aging  
(Rock County Specialized Transit)  
3530 N. Parker Drives  
Janesville, WI 53545  
608-757-5054

Sherry Gunderson  
Rock County Health Care Center - Rock Haven  
North Highway 51  
Janesville, WI 53545  
608-757-5000

Lutheran Social Services  
612 N. Randall Ave  
Janesville, WI 53545  
608-741-6434

Lynn Jones  
20 Eclipse Center  
Beloit, WI 53511

Janesville Transit System  
900 N. Parker Drive  
Janesville, WI 53545

Jennifer Patridge  
Kandu Industries  
1741 Adel Street  
Janesville, WI 53546

Catholic Charities  
2020 E. Milwaukee Street, Suite 9  
Janesville, WI, 53545

Riverfront  
1107 Barberry Drive  
Janesville, WI 53545

Patty Hansberry  
RSVP  
2433 Riverside Drive  
Beloit, WI 53511



## APPENDIX B - PRIVATE ENTERPRISE PARTICIPATION PROCESS

### JANESVILLE AREA MPO DESCRIPTION OF PLANNING AND PROGRAMMING ACTIONS IN COMPLIANCE WITH FTA'S POLICY OF PRIVATE ENTERPRISE PARTICIPATION IN THE URBAN MASS TRANSPORTATION PROGRAM

#### Overview

The Janesville Area Metropolitan Planning Organization has developed a process for the inclusion of private providers of transportation services into all phases of transportation planning and programming in the Janesville area. This process was developed in response to the Federal Transit Administration's guidance on documentation of private enterprise participation in Urban Mass Transportation Programs, published in the Federal Register on 24 January 1986. This policy states that:

The City of Janesville will encourage the provision of adequate privately owned and paratransit transportation services.

#### **Description of the Private Section Involvement Process**

Participation in Wisconsin Department of Transportation Privatization Study.

With assistance from Rock County, the Janesville Area MPO will maintain an inventory of all private transportation providers in the Janesville Urbanized Area. The MPO staff will notify private operators of all Technical Committee and Policy Board meetings at which transit items are to be discussed. Private operators will also be notified of public hearings and plans which involve the establishment of new transit services or the expansion of existing transit services. Staff will ask private operators to participate in the evaluation of these services at MPO Technical and Policy Board meetings.

The Janesville Area MPO staff will notify private operators of plans for new and/or restructured services as part of the annual Transportation Improvement Program Update. With the notification, private providers will be made aware of where they can obtain a copy of the TIP.

If a private provider indicates an interest (in writing) in providing a new or restructured service, the MPO staff will work with the Janesville Transit System (JTS) to see that specifications for the service are provided to the private operator. The private operator will be asked to submit a proposal. The proposals will be evaluated based on criteria which is developed and made available to the private provider early in the process.

The Janesville Area MPO staff provides technical assistance and public information to individuals and organizations that request it. This includes private transportation providers that may request information or assistance with projects related to transit planning and programming.

#### **New and Restructured Services**

None.

#### **Private Sector Capital Investment Strategies**

There are no private-public investments contained in the 2018-2023 Transportation Improvement Program.

## Complaint Disposition Process

This process refers specifically to the Federal Transit Administration's Private Sector Participation Policy as set forth on October 22, 1984 and January 24, 1986. The purpose of this complaint disposition process is to set forth the formal procedures that will be used to resolve disputes between a private transportation provider and public agency. The intent of this process is to develop a procedure that will be used to resolve disputes between a private transportation provider and a public agency. The intent of this process is to develop a procedure that will be followed where other established procedures are delineated in contracts and bid documents will be used to resolve disputes in these areas. Where these procedures are not applicable, the following process will be employed.

1. The complainant requests the appropriate public agency (JTS) to review the complaint. The public agency (JTS) responds within 30 days. The complainant, if not satisfied can request a meeting with agency representatives. The administrator overseeing the agency (e.g. the Director of Neighborhood and Community Services in the case of JTS) issues a determination within 60 days.
2. If the complaint is not resolved, the private provider can file a formal complaint with the Janesville Area Metropolitan Planning Organization's Technical Advisory Committee. The committee or its designee reviews the complaint and issues a determination within 60 days from receipt of the complaint. The criteria used to evaluate the complaint will be developed on a case-by-case basis.

**APPENDIX C - RESOLUTION APPROVING THE 2018-2023 TRANSPORTATION IMPROVEMENT PROGRAM**

**(Continued On Next Page)**

**RESOLUTION 2017 - 06**

**A Resolution Endorsing the 2018-2023 Transportation Improvement Program  
For the Janesville Metropolitan Planning Area**


**WHEREAS**, the Janesville Area Metropolitan Planning Organization Policy Board is recognized by the Governor of Wisconsin, the Federal Highway Administration and the Federal Transit Administration as the urban transportation planning policy body with responsibility for carrying out the urban transportation planning process in accordance with federal regulations.

**NOW THEREFORE BE IT RESOLVED**, that the Policy Board of the Janesville Area Metropolitan Planning Organization endorses the 2018-2023 Transportation Improvement Program (TIP) for the Janesville urbanized area as being consistent with the 2015-2050 Janesville Area Long Range Transportation Plan, and the Janesville Transit System Transit Development Plan of 2017.

**BE IT FURTHER RESOLVED**, that the Policy Board certifies that the requirements of Section 134 of Title 23, CFR 450 (the Federal Transit Administration's and Federal Highway Administration's regulations for urban transportation planning), Title VI of the Civil Rights Act of 1964 and the Title VI assurance executed by the State of Wisconsin under 23 U.S.C. 140 and 29 U.S.C. 794, sections 1101(b) of Moving Ahead for Progress in the 21<sup>st</sup> Century Act (MAP – 21) (P.L. 112-141), and all applicable FAST Act and ADA requirements are met.

**AND BE IT FURTHER RESOLVED**, that the Janesville Area Metropolitan Planning Organization Policy Board approves the 2018-2023 Transportation Improvement Program.

ADOPTED: November 29, 2017

APPROVED:   
Chair, MPO Policy Board

ATTEST:   
Duane Cherek  
Planning Services Manager/ MPO Director