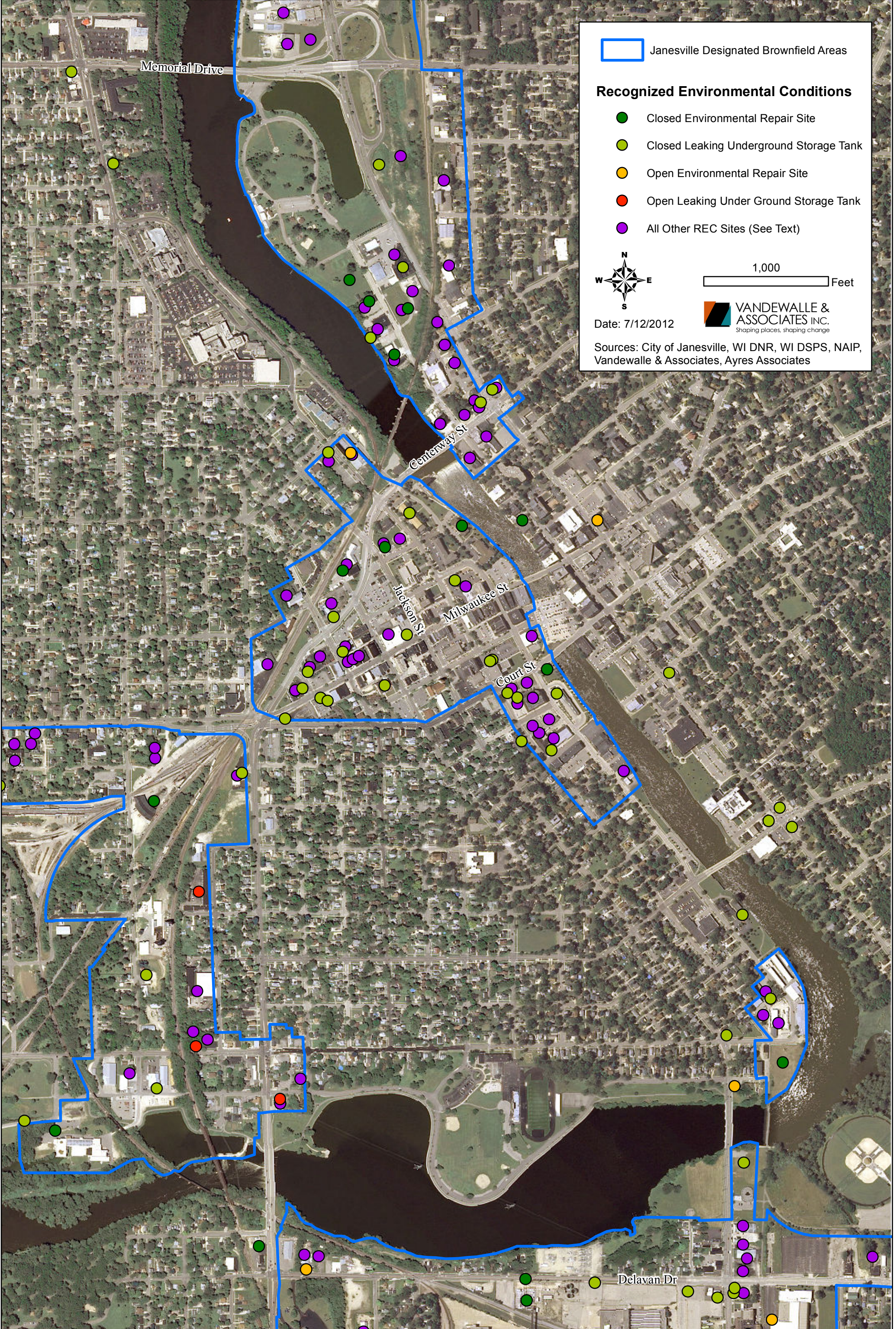






City of Janesville Central Area Parcels with Recognized Environmental Conditions

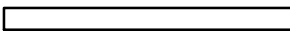


 Janesville Designated Brownfield Areas

Recognized Environmental Conditions

-  Closed Environmental Repair Site
-  Closed Leaking Underground Storage Tank
-  Open Environmental Repair Site
-  Open Leaking Under Ground Storage Tank
-  All Other REC Sites (See Text)



 1,000 Feet

Date: 7/12/2012

 **VANDEWALLE & ASSOCIATES INC.**
Shaping places, shaping change

Sources: City of Janesville, WI DNR, WI DSPS, NAIP, Vandewalle & Associates, Ayres Associates

City of Janesville
Central Area Sites with Recognized Environmental Conditions (REC's)

Sources:

The source for the following is the Wisconsin Department of Natural Resources Bureau for Remediation and Redevelopment Tracking System ("BRRTS")\

<http://dnr.wi.gov/botw/SetUpBasicSearchForm.do>

- Open Environmental Repair Sites (ERP)
- Closed Environmental Repair Sites (ERP)
- Open Leaking Underground Storage Tanks (LUST)
- Closed Underground Storage Tanks (LUST)

Sources for sites identified as having an "Other REC" include one or more of the following:

- A site with an historic land use typically associated with REC's as indicated on one or more Sanborn maps from 1884, 1890, 1895, 1901, 1909, 1915, 1926, 1948, and 1970
- A site with an historic land use typically associated with REC's as included in one or more city business directories from 1967, 1970, 1974, 1980, 1985, 1990, 1995, 2000, 2005, and 2008
- Other BRRTS Sites not otherwise indicated as an open or closed ERP or LUST including Spills, General Property, or No Action Required (see DNR glossary for full definitions).
<http://dnr.wi.gov/topic/Brownfields/Glossary.html>
- An open or closed petroleum storage tank as listed in the Storage Tank Database maintained by the Wisconsin Department of Safety and Professional Services
<http://dsps.wi.gov/er/ER-EN-tanks-info.html>