



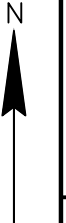
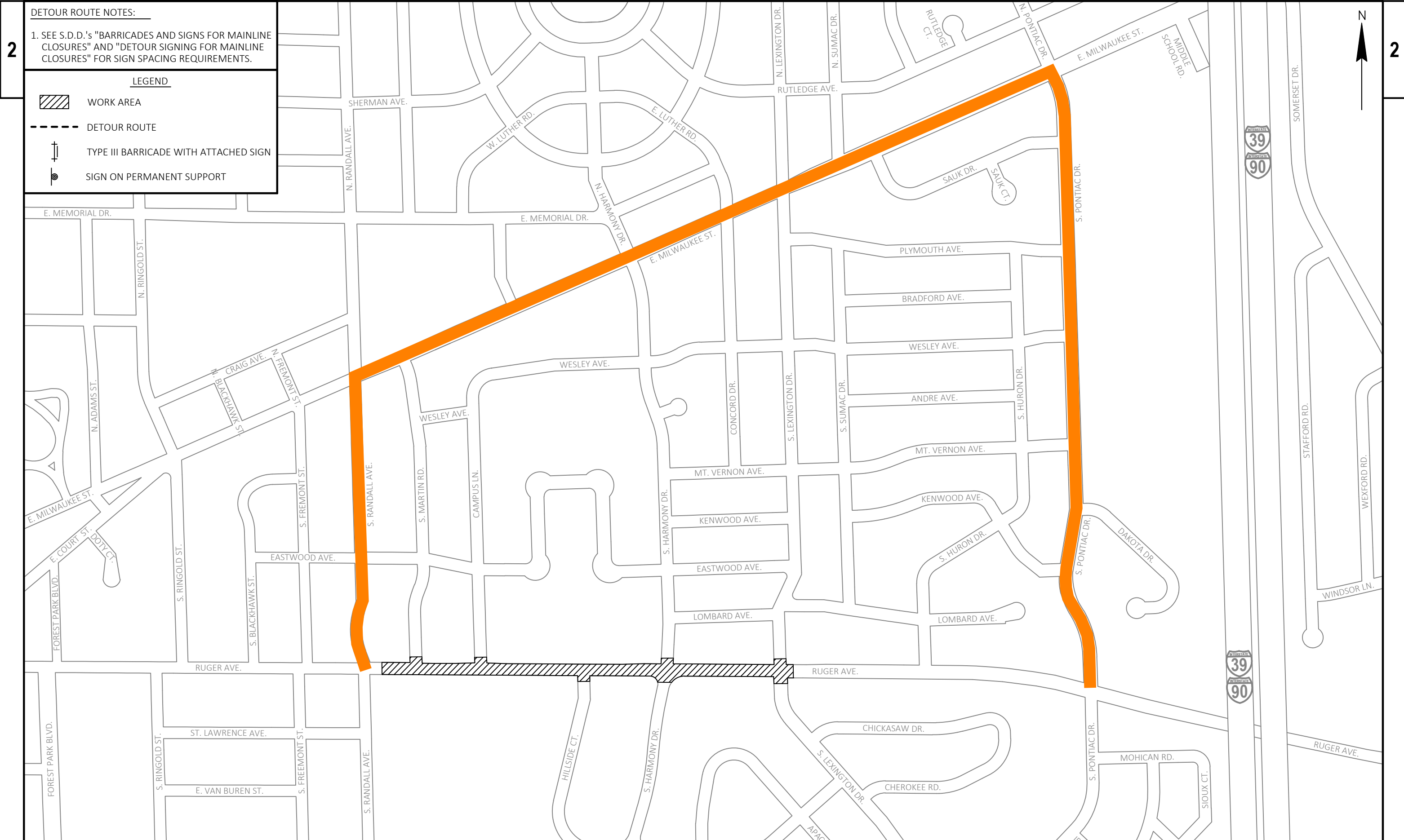


**2** DETOUR ROUTE NOTES:  
 1. SEE S.D.D.'s "BARRICADES AND SIGNS FOR MAINLINE CLOSURES" AND "DETOUR SIGNING FOR MAINLINE CLOSURES" FOR SIGN SPACING REQUIREMENTS.

**LEGEND**

-  WORK AREA
-  DETOUR ROUTE
-  TYPE III BARRICADE WITH ATTACHED SIGN
-  SIGN ON PERMANENT SUPPORT



**2**