

## APPENDIX A

### AMENDMENTS TO THE FUTURE LAND USE MAP

Property Name	Address	TaxID	Previous Future Land Use	New Future Land Use
Forzack Trucking	2304 Fulton Street	207300051	Community Commercial	Commercial/Light Industrial
Forzack Trucking	2305 Fulton Street	207300052	Community Commercial	Commercial/Light Industrial
Cedar Crest	1800 S River Road	410200013	SFR-Urban	Mixed Residential
Diamond Ridge	1231 Mayfair Dr	124300030	SFR-Urban	Mixed Residential
2F Rezoning	483-485 N. Walnut Street	135200248	Neighborhood Commercial	Single-Family Residential-Urban
LKQ Expansion	1250 Venture Dr	307400052	Light Industrial	General Industrial
SF Rezoning	2706 Holiday Dr	220100029	Office	Single-Family Residential-Urban
Back Bar (easterly half)	1901 Beloit Avenue	307100033	General Industrial	Commercial/Light Industrial
Crosby Place	120 N. Crosby Avenue	135100114	Office	Planned Mixed Use
Seneca Foods Housing	530 E. Conde St	307400026	Light Industrial	General Industrial
SF Annexation	2821 W. Court St	134300019	SFR-Exurban	Single-Family Residential-Urban
SF Annexation	1271 Afton Rd	403300007	No designation	Single-Family Residential-Urban

## **SUGGESTED FUTURE AMENDMENTS TO EXPAND PLANNED MIXED USE AREAS.**

---

The following maps are provided as consideration for future amendments to this Plan. These areas represent parcels that are currently identified for a single use of either Commercial, Office, or Multi-Family Residential and may be appropriate areas for future Mixed-use development. These are not amendments to the City's official future land use map but are areas the City may support designating as Planned Mixed Use to facilitate mixed use developments on site.

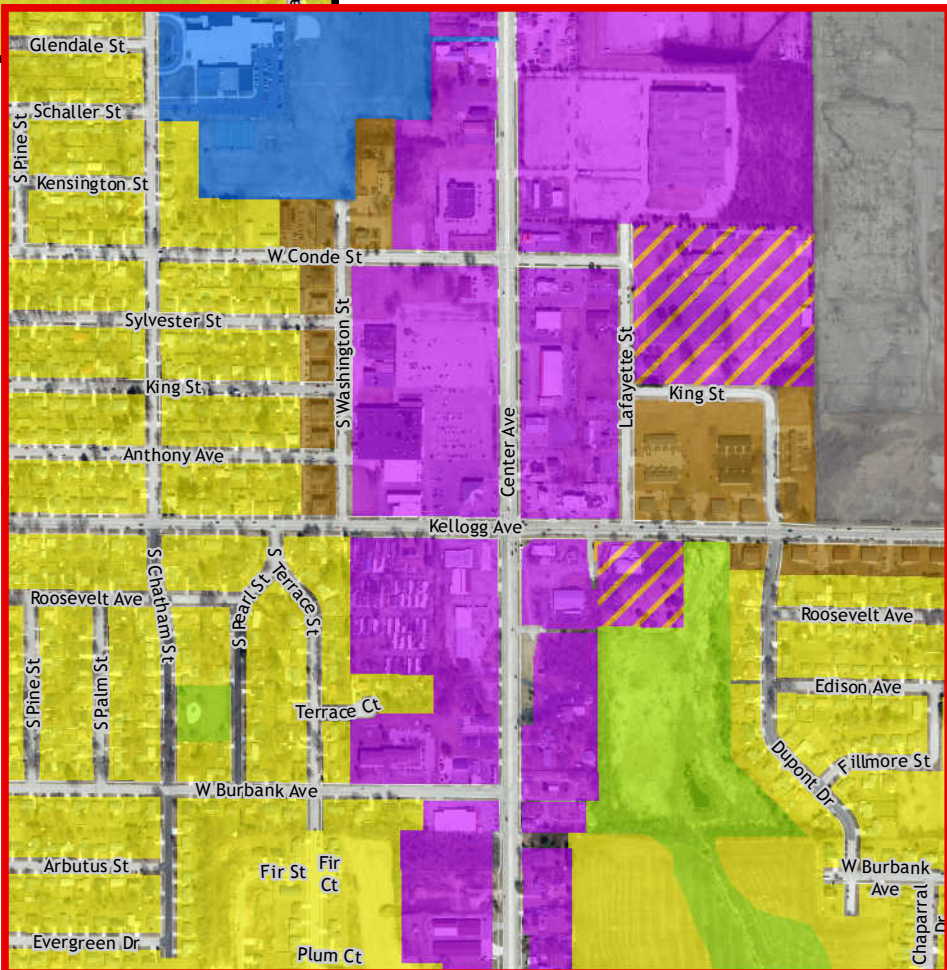
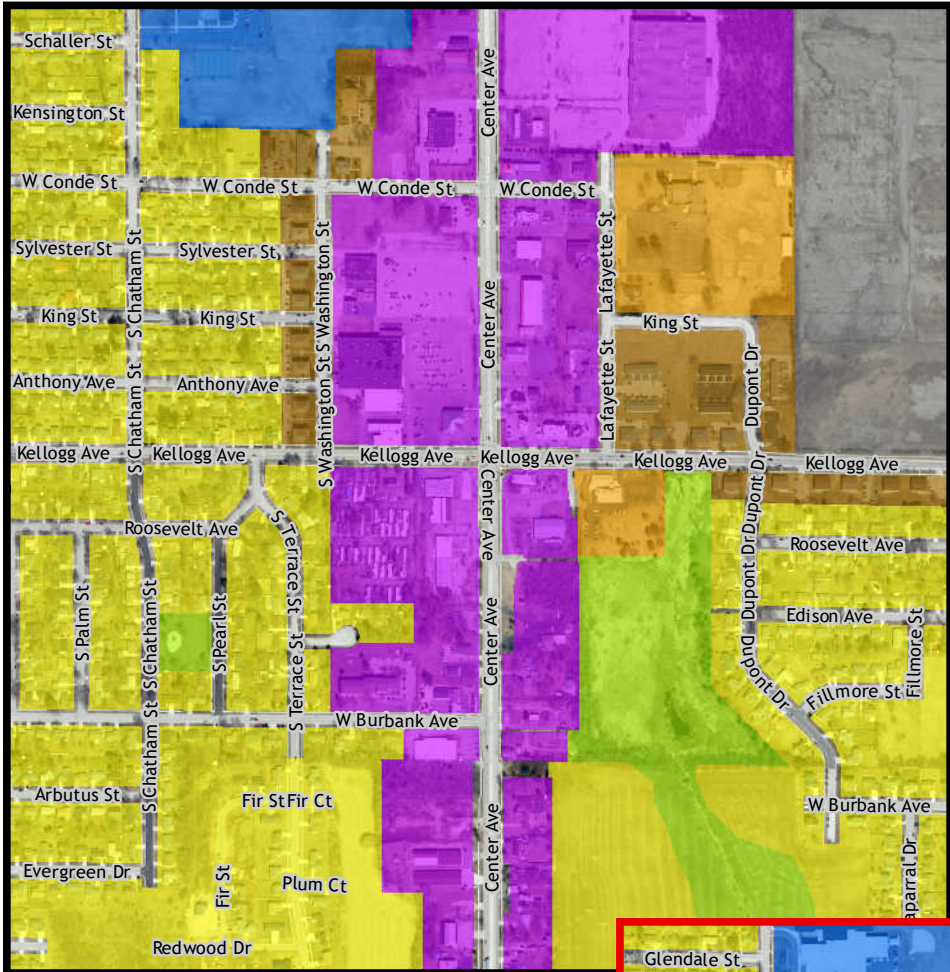
These areas include:

1. Center Avenue and Kellogg Ave
2. Center Avenue and the Rock River
3. Rock River Bend at Delavan Drive
4. West Court Street and Rockport Park
5. West Side
6. East Milwaukee and Harmony Drive to Pontiac Drive
7. Milton Avenue and Black Bridge Road
8. Holiday Drive and Lexington Drive to Pontiac Drive
9. Humes Road and Wright Road
10. John Paul Road and State Highway 26

# Current Future Land Use Designation

## Future Land Use Categories

-  New Planned Mixed Use
-  Planned Mixed Use
-  Office
-  Community Commercial
-  Neighborhood Commercial
-  Single-Family Residential - Urban
-  Single-Family Residential - Exurban
-  Two-Family/Townhouse Residential
-  Multi-Family Residential
-  Agriculture
-  Community Facilities
-  Planned Neighborhood
-  Downtown
-  Parks, Open Spaces, and Env. Corridors
-  Possible Commercial or Light Industrial
-  Light Industrial
-  General Industrial
-  Extraction
-  Extraction and Disposal
-  Surface Water



General Area:  
Center Ave and  
Kellogg Ave

**Planned Mixed Use areas  
to consider for  
future amendment**

**Future Land Use Map  
Janesville Comprehensive Plan**



**CITY OF JANESVILLE**  
*Wisconsin's Park Place*

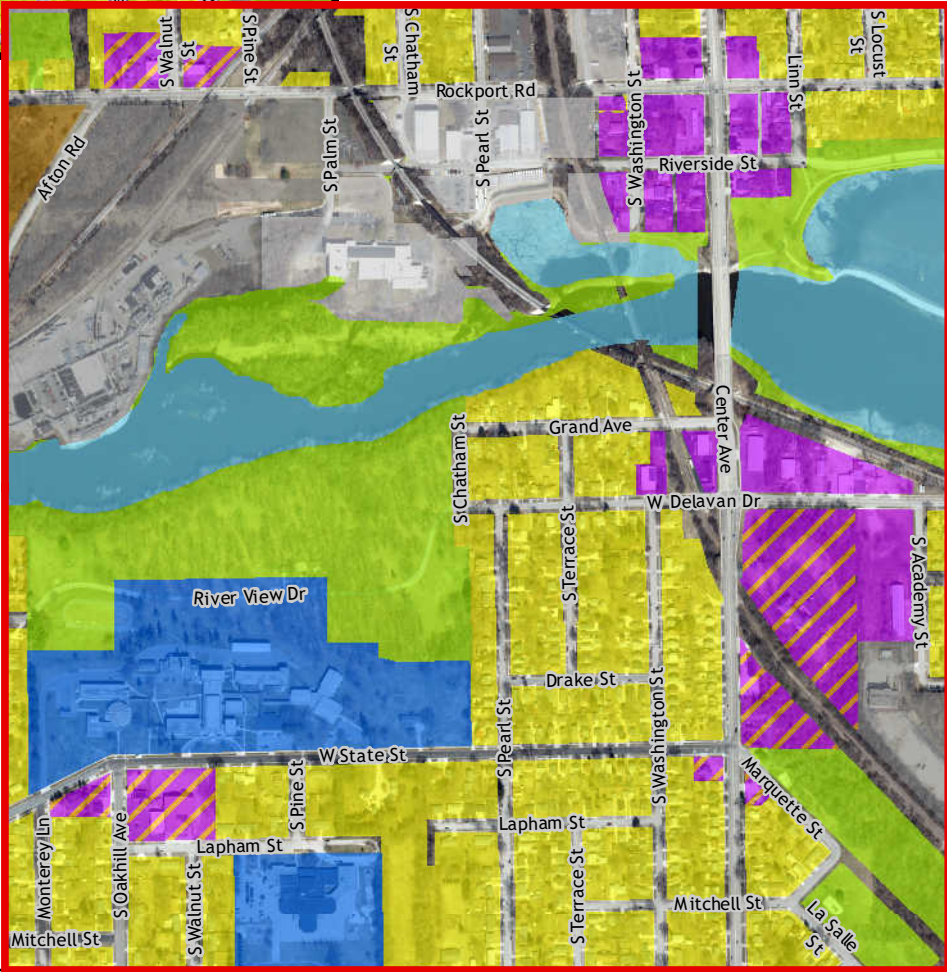
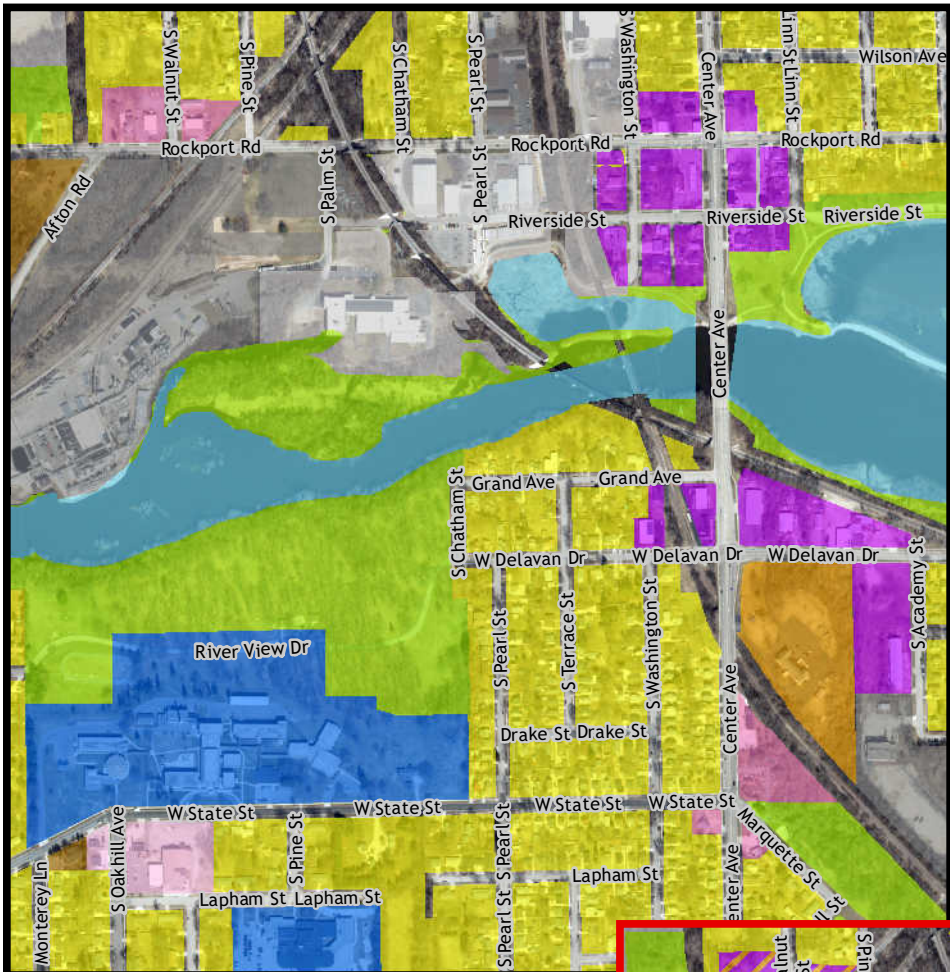
2/21/2023, D. Salmon, Planning Division  
S:\Projects\Planning\Comprehensive Plan\2023\Map Areas\Future Land Use\Center Ave\_Kellogg.mxd



# Current Future Land Use Designation

## Future Land Use Categories

-  New Planned Mixed Use
-  Planned Mixed Use
-  Office
-  Community Commercial
-  Neighborhood Commercial
-  Single-Family Residential - Urban
-  Single-Family Residential - Exurban
-  Two-Family/Townhouse Residential
-  Multi-Family Residential
-  Agriculture
-  Community Facilities
-  Planned Neighborhood
-  Downtown
-  Parks, Open Spaces, and Env. Corridors
-  Possible Commercial or Light Industrial
-  Light Industrial
-  General Industrial
-  Extraction
-  Extraction and Disposal
-  Surface Water



General Area:  
Center Ave and  
Rock River

**Planned Mixed Use areas  
to consider for  
future amendment**

**Future Land Use Map  
Janesville Comprehensive Plan**



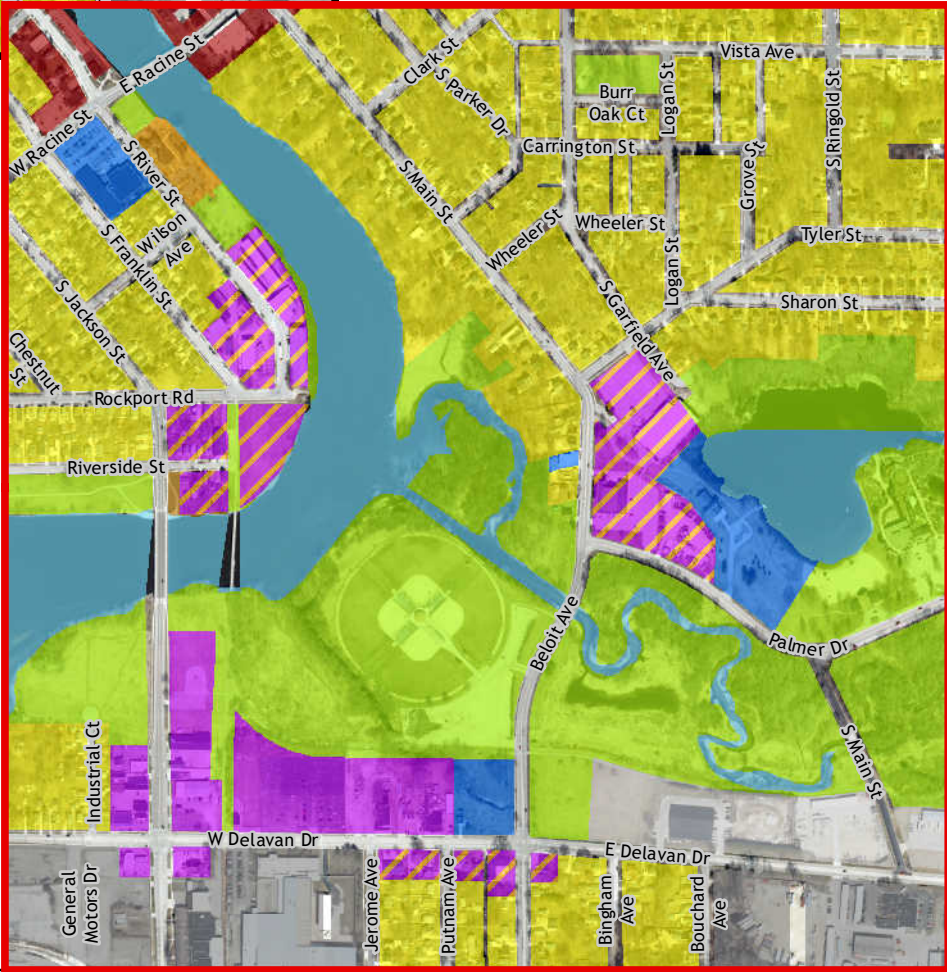
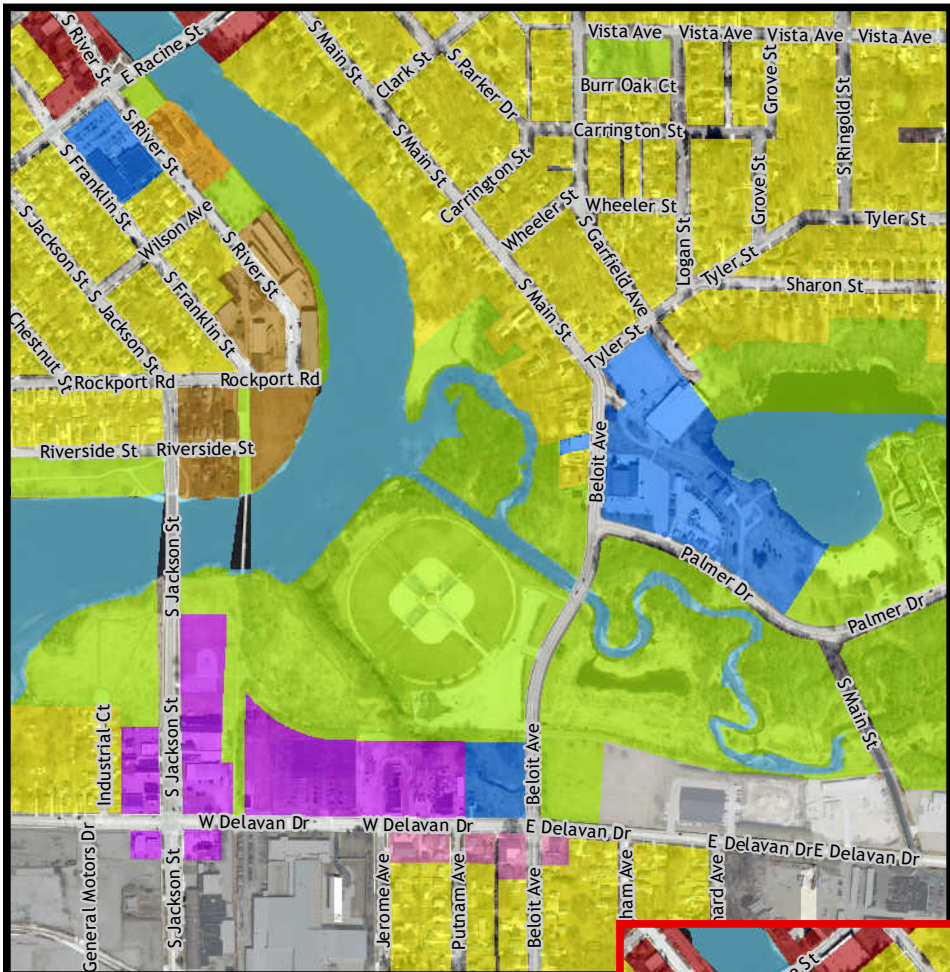
DISCLAIMER: This data is provided by the City of Janesville for informational purposes only. The City does not warrant or guarantee the accuracy or reliability of this data. The recipient of this data assumes any risk of its use for any purpose.



# Current Future Land Use Designation

## Future Land Use Categories

-  New Planned Mixed Use
-  Planned Mixed Use
-  Office
-  Community Commercial
-  Neighborhood Commercial
-  Single-Family Residential - Urban
-  Single-Family Residential - Exurban
-  Two-Family/Townhouse Residential
-  Multi-Family Residential
-  Agriculture
-  Community Facilities
-  Planned Neighborhood
-  Downtown
-  Parks, Open Spaces, and Env. Corridors
-  Possible Commercial or Light Industrial
-  Light Industrial
-  General Industrial
-  Extraction
-  Extraction and Disposal
-  Surface Water



General Area:  
Rock River Bend

**Planned Mixed Use areas  
to consider for  
future amendment**

**Future Land Use Map  
Janesville Comprehensive Plan**



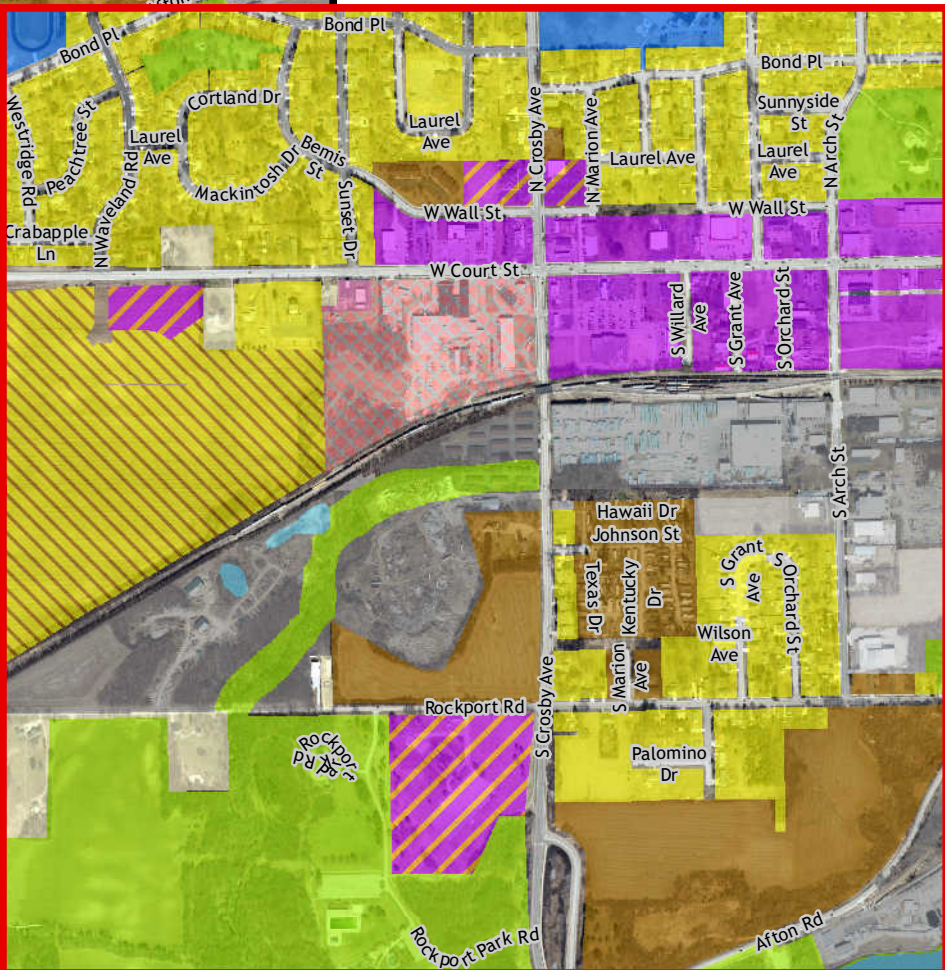
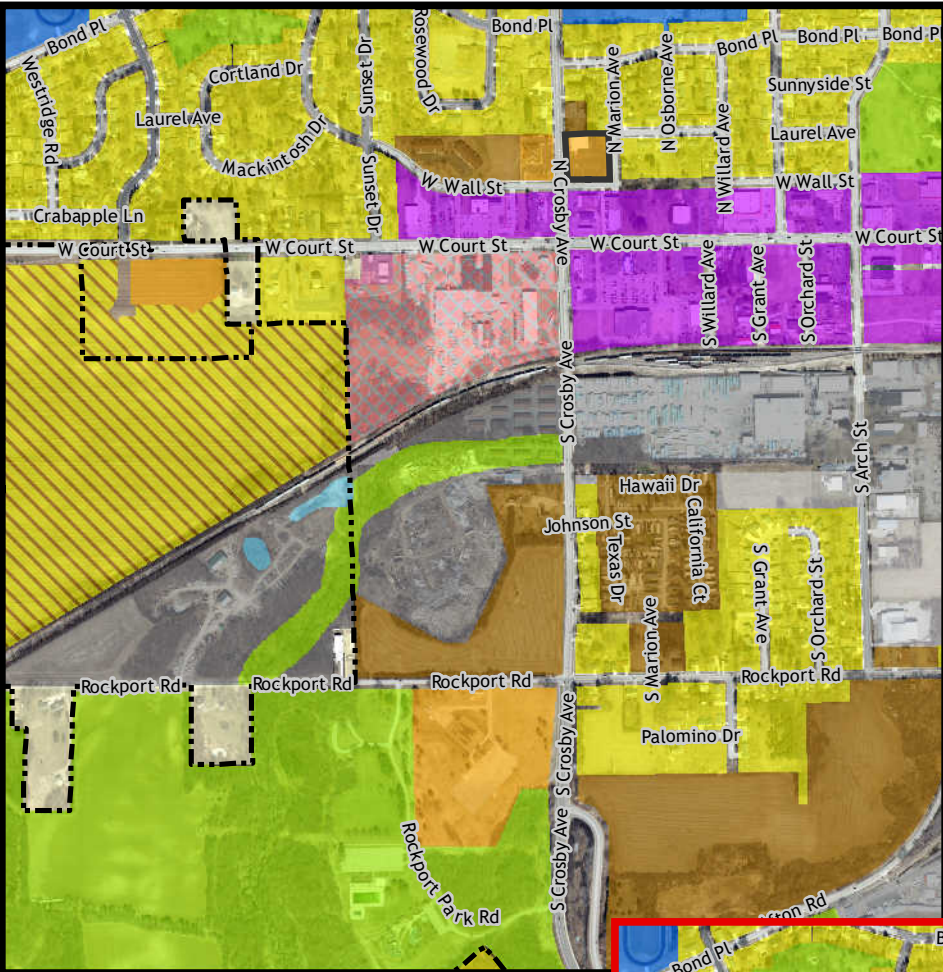
DISCLAIMER: This data is provided by the City of Janesville for informational purposes only. The City does not warrant or guarantee the accuracy or reliability of this data. The recipient of this data assumes any risk of its use for any purpose.



# Current Future Land Use Designation

## Future Land Use Categories

-  New Planned Mixed Use
-  Planned Mixed Use
-  Office
-  Community Commercial
-  Neighborhood Commercial
-  Single-Family Residential - Urban
-  Single-Family Residential - Exurban
-  Two-Family/Townhouse Residential
-  Multi-Family Residential
-  Agriculture
-  Community Facilities
-  Planned Neighborhood
-  Downtown
-  Parks, Open Spaces, and Env. Corridors
-  Possible Commercial or Light Industrial
-  Light Industrial
-  General Industrial
-  Extraction
-  Extraction and Disposal
-  Surface Water



General Area:  
Court St and  
Rockport Park

**Planned Mixed Use areas  
to consider for  
future amendment**

Future Land Use Map  
Janesville Comprehensive Plan



CITY OF JANESVILLE  
*Wisconsin's Park Place*

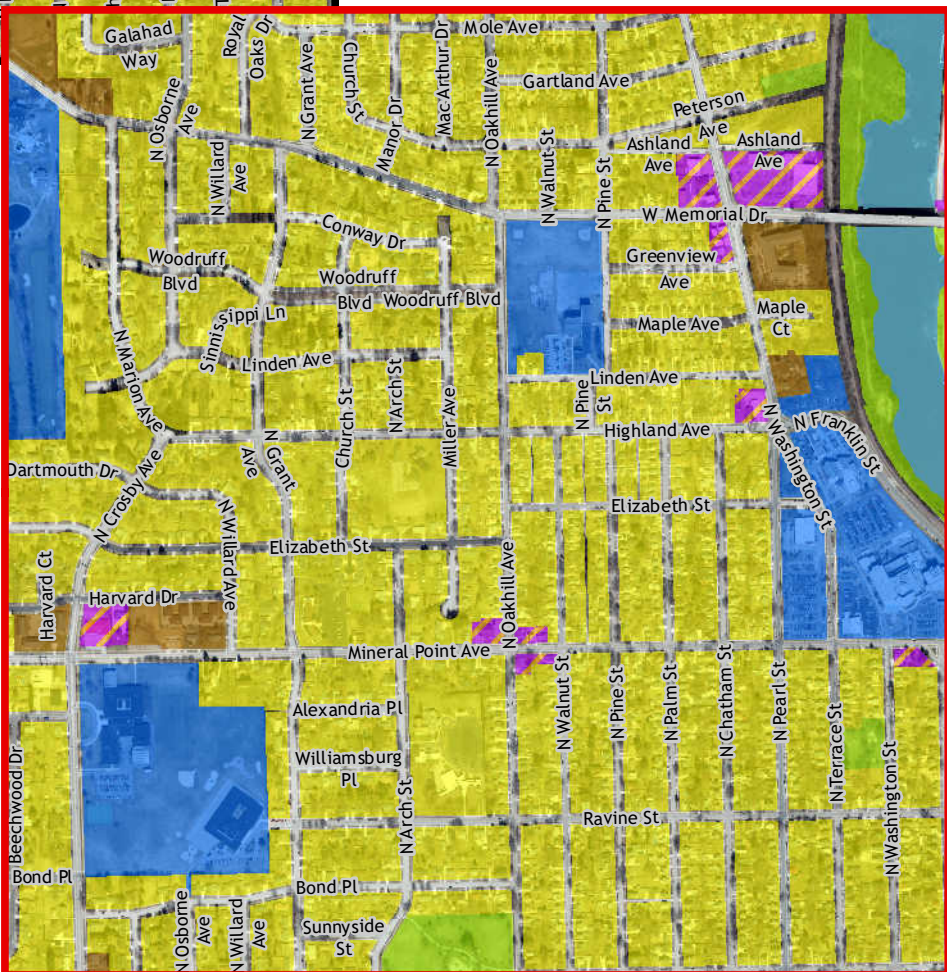
2/21/2025, D. Salmon, Planning Division  
S:\Projects\Planning\Comprehensive Plan\2025\Map Areas\STUL&E\rockville\_w Court St.mxd



# Current Future Land Use Designation

## Future Land Use Categories

-  New Planned Mixed Use
-  Planned Mixed Use
-  Office
-  Community Commercial
-  Neighborhood Commercial
-  Single-Family Residential - Urban
-  Single-Family Residential - Exurban
-  Two-Family/Townhouse Residential
-  Multi-Family Residential
-  Agriculture
-  Community Facilities
-  Planned Neighborhood
-  Downtown
-  Parks, Open Spaces, and Env. Corridors
-  Possible Commercial or Light Industrial
-  Light Industrial
-  General Industrial
-  Extraction
-  Extraction and Disposal
-  Surface Water



General Area:  
West Side

**Planned Mixed Use areas  
to consider for  
future amendment**

**Future Land Use Map  
Janesville Comprehensive Plan**



**CITY OF JANESVILLE**  
*Wisconsin's Park Place*

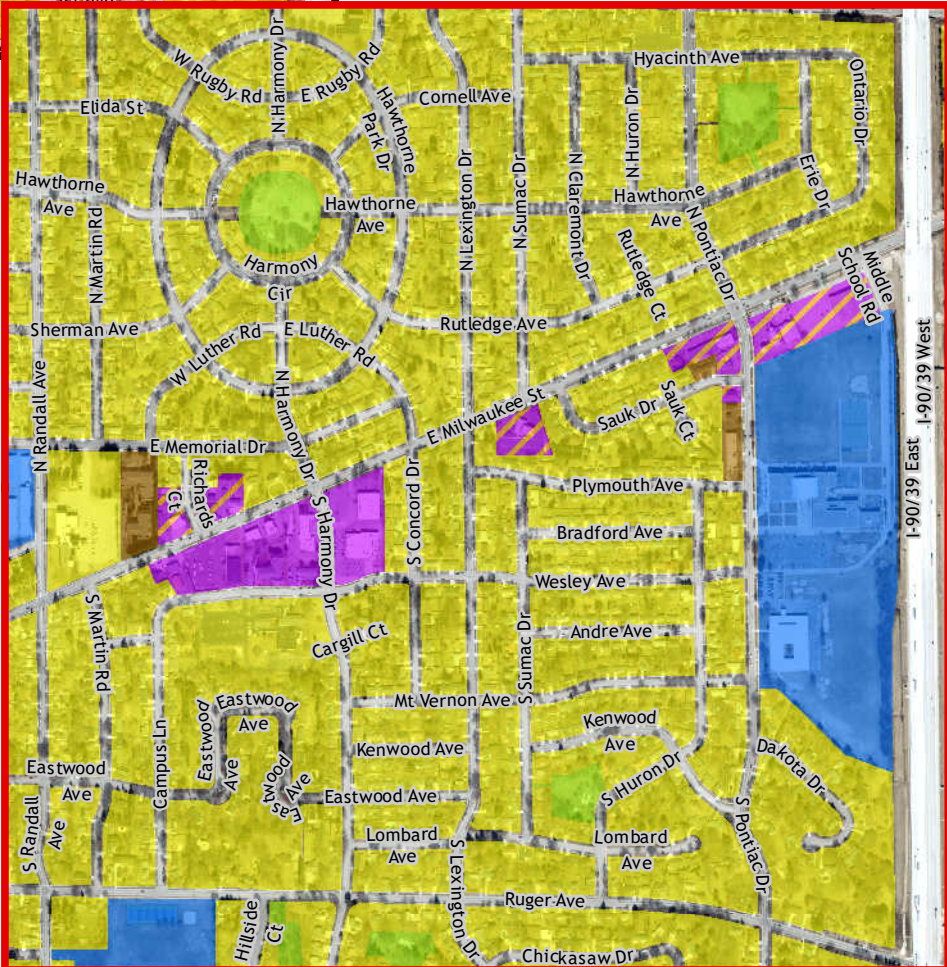
2/21/2025, D. Salomon, Planning Division  
S:\Projects\Planning\GIS\comprehensive\Plan\_2025\PA\_Areas\FULL\_Bookends\_West Side.mxd



# Current Future Land Use Designation

## Future Land Use Categories

-  New Planned Mixed Use
-  Planned Mixed Use
-  Office
-  Community Commercial
-  Neighborhood Commercial
-  Single-Family Residential - Urban
-  Single-Family Residential - Exurban
-  Two-Family/Townhouse Residential
-  Multi-Family Residential
-  Agriculture
-  Community Facilities
-  Planned Neighborhood
-  Downtown
-  Parks, Open Spaces, and Env. Corridors
-  Possible Commercial or Light Industrial
-  Light Industrial
-  General Industrial
-  Extraction
-  Extraction and Disposal
-  Surface Water



General Area:  
E Milwaukee St  
and Harmony Dr  
Pontiac Dr

**Planned Mixed Use areas  
to consider for  
future amendment**

Future Land Use Map  
Janesville Comprehensive Plan



CITY OF JANESVILLE  
*Wisconsin's Park Place*

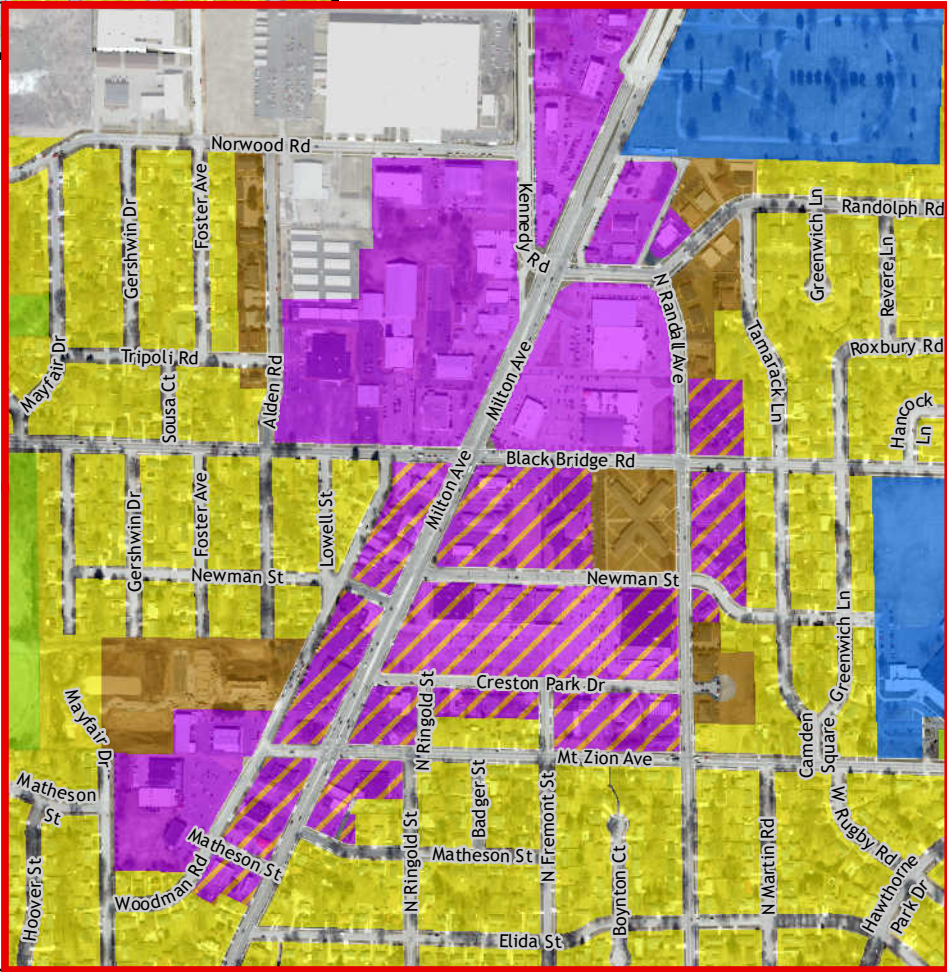
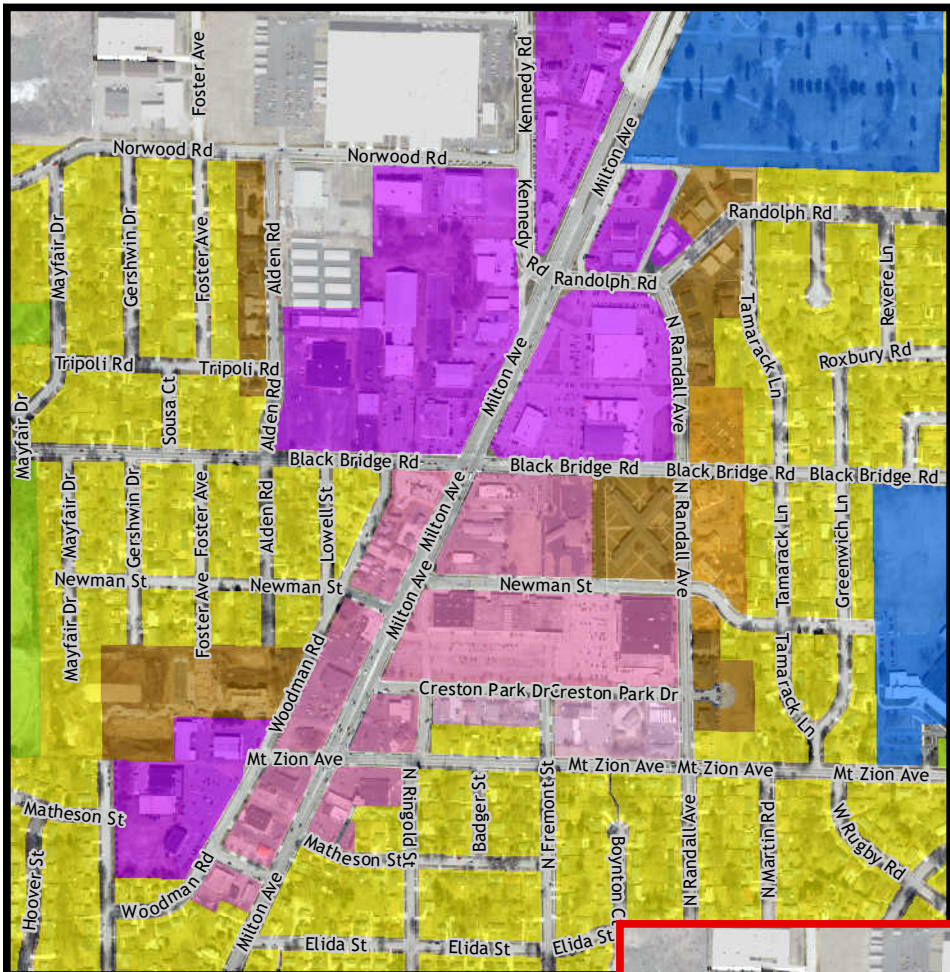
2/21/2023; D. Salmon, Planning Division  
S:\Projects\Planning\Comprehensive\_Plan\_2022\Map\_Areas\1311\_Rev001ck\_1\_MKEmxd



# Current Future Land Use Designation

## Future Land Use Categories

-  New Planned Mixed Use
-  Planned Mixed Use
-  Office
-  Community Commercial
-  Neighborhood Commercial
-  Single-Family Residential - Urban
-  Single-Family Residential - Exurban
-  Two-Family/Townhouse Residential
-  Multi-Family Residential
-  Agriculture
-  Community Facilities
-  Planned Neighborhood
-  Downtown
-  Parks, Open Spaces, and Env. Corridors
-  Possible Commercial or Light Industrial
-  Light Industrial
-  General Industrial
-  Extraction
-  Extraction and Disposal
-  Surface Water



General Area:  
Milton Ave and  
Black Bridge Rd

**Planned Mixed Use areas  
to consider for  
future amendment**

**Future Land Use Map  
Janesville Comprehensive Plan**



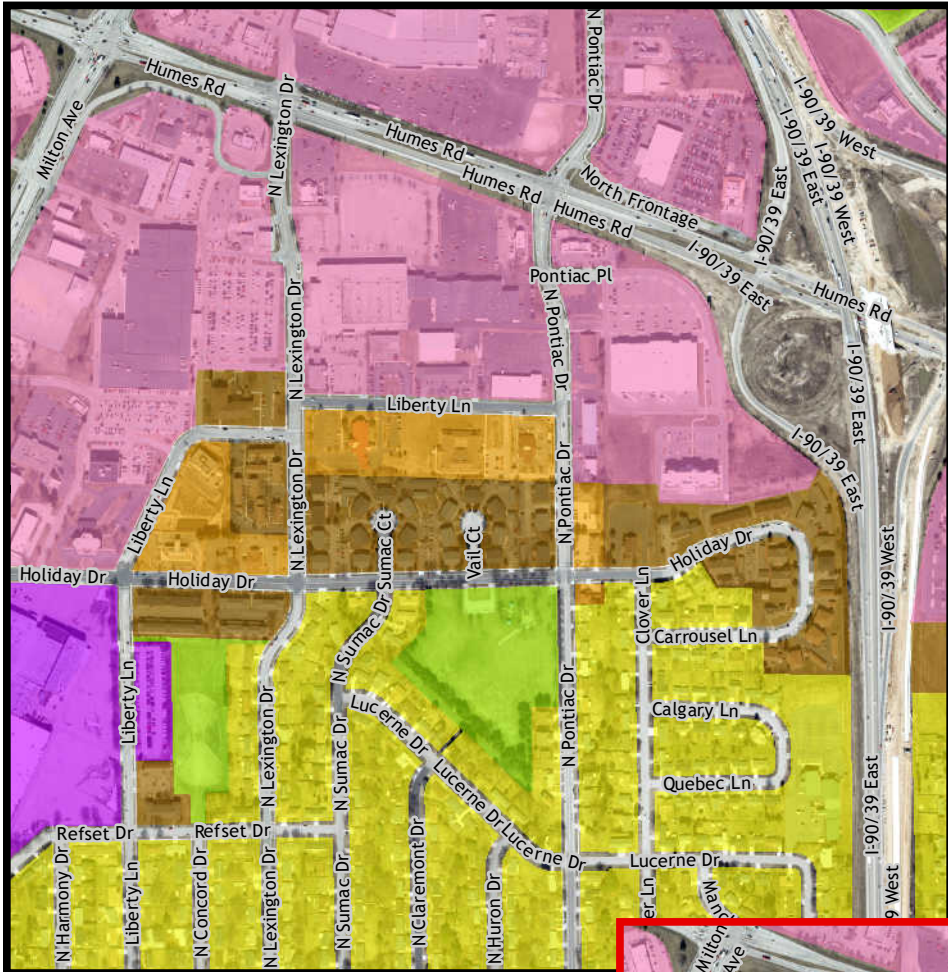
DISCLAIMER: This data is provided by the City of Janesville for informational purposes only. The City does not warrant or guarantee the accuracy or reliability of this data. The recipient of this data assumes any risk of its use for any purpose.



# Current Future Land Use Designation

## Future Land Use Categories

-  New Planned Mixed Use
-  Planned Mixed Use
-  Office
-  Community Commercial
-  Neighborhood Commercial
-  Single-Family Residential - Urban
-  Single-Family Residential - Exurban
-  Two-Family/Townhouse Residential
-  Multi-Family Residential
-  Agriculture
-  Community Facilities
-  Planned Neighborhood
-  Downtown
-  Parks, Open Spaces, and Env. Corridors
-  Possible Commercial or Light Industrial
-  Light Industrial
-  General Industrial
-  Extraction
-  Extraction and Disposal
-  Surface Water



General Area:  
Holiday Dr and  
Lexington Dr  
Pontiac Dr

**Planned Mixed Use areas  
to consider for  
future amendment**

Future Land Use Map  
Janesville Comprehensive Plan



CITY OF JANESVILLE  
*Wisconsin's Park Place*

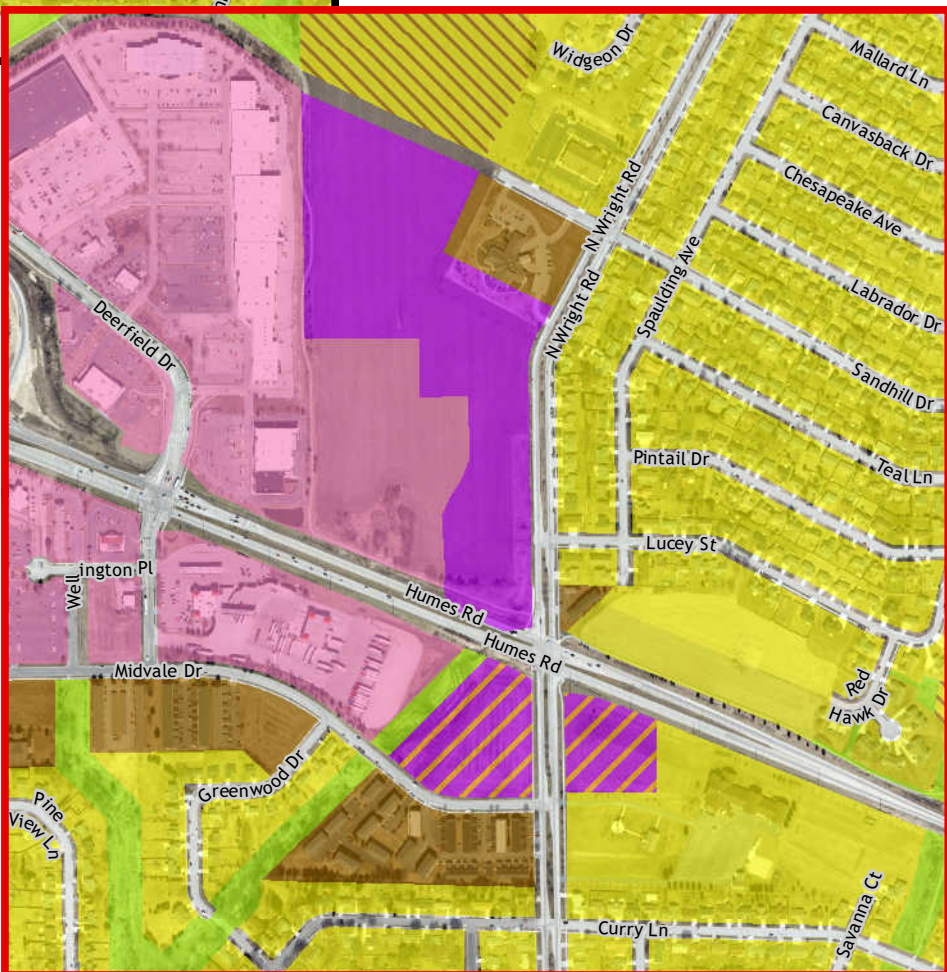
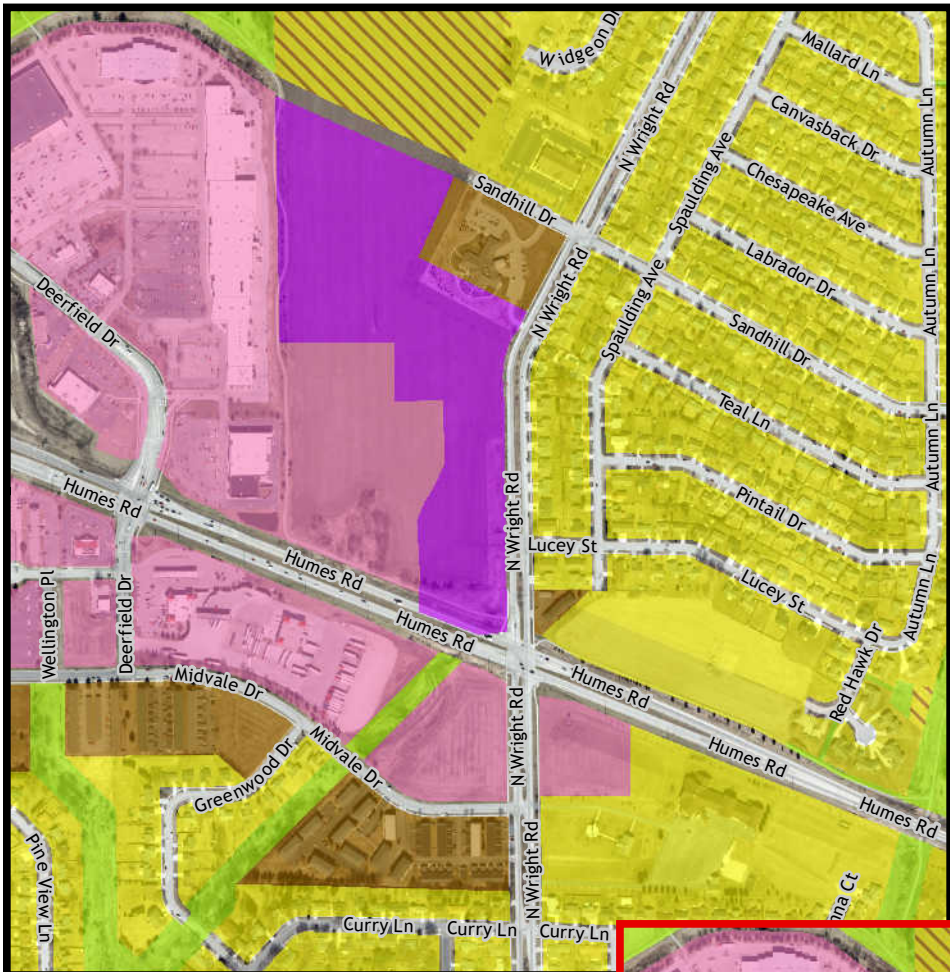
2/21/2023, D. Salomon, Planning Division  
S:\Projects\Planning\GIS\comprehensive-plan-2022\FINAL\Area-1331\_Retainable\_Maps\_Holiday.mxd



# Current Future Land Use Designation

## Future Land Use Categories

-  New Planned Mixed Use
-  Planned Mixed Use
-  Office
-  Community Commercial
-  Neighborhood Commercial
-  Single-Family Residential - Urban
-  Single-Family Residential - Exurban
-  Two-Family/Townhouse Residential
-  Multi-Family Residential
-  Agriculture
-  Community Facilities
-  Planned Neighborhood
-  Downtown
-  Parks, Open Spaces, and Env. Corridors
-  Possible Commercial or Light Industrial
-  Light Industrial
-  General Industrial
-  Extraction
-  Extraction and Disposal
-  Surface Water



General Area:  
Humes Rd and  
Wright Rd

**Planned Mixed Use areas  
to consider for  
future amendment**

**Future Land Use Map  
Janesville Comprehensive Plan**



**CITY OF JANESVILLE**  
*Wisconsin's Park Place*

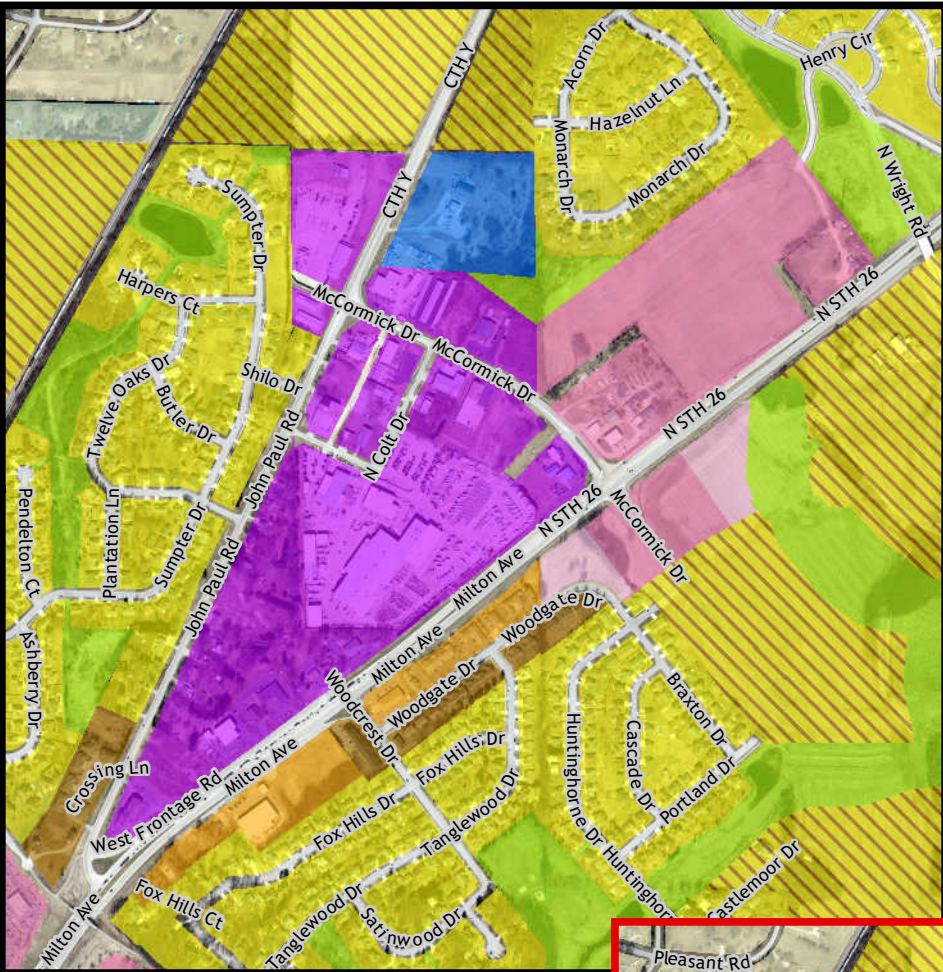
2/21/2023, D. Salomon, Planning Division  
S:\Projects\Planning\GIS\performance\Plan\_2022\PA01\_Aerial\_VL01\_00000001\_Humes\_Wright.mxd



# Current Future Land Use Designation

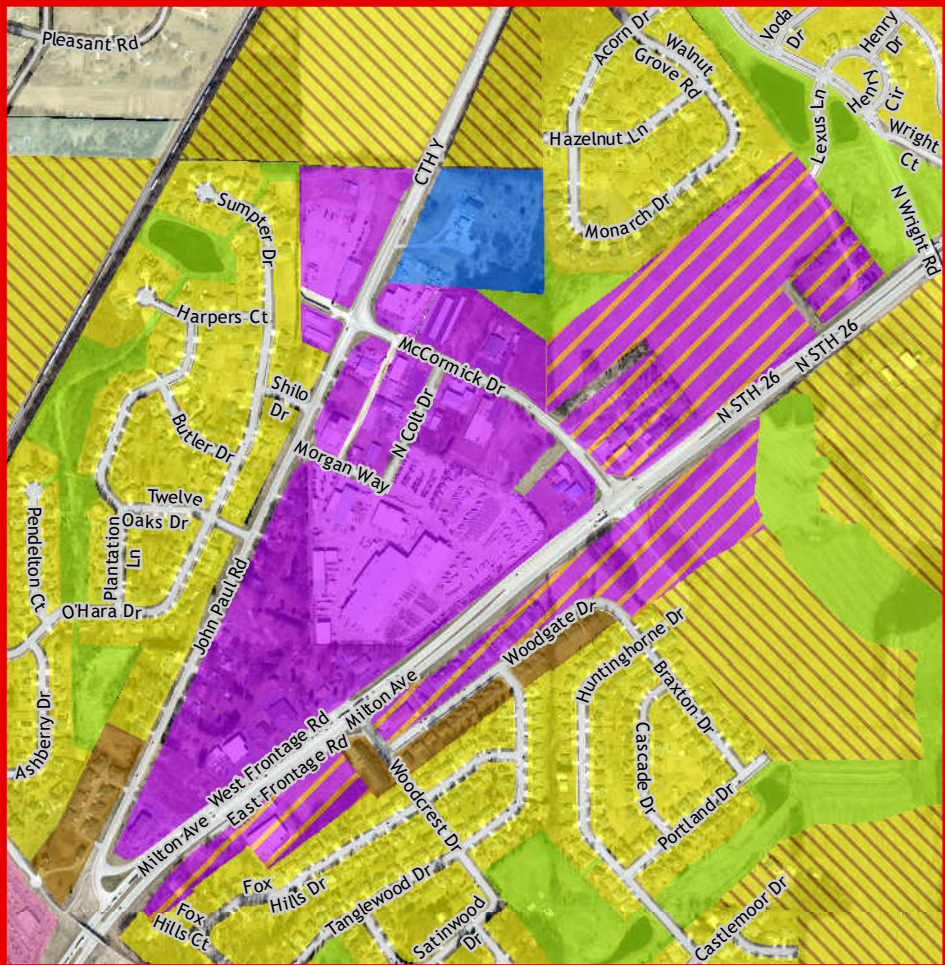
## Future Land Use Categories

-  New Planned Mixed Use
-  Planned Mixed Use
-  Office
-  Community Commercial
-  Neighborhood Commercial
-  Single-Family Residential - Urban
-  Single-Family Residential - Exurban
-  Two-Family/Townhouse Residential
-  Multi-Family Residential
-  Agriculture
-  Community Facilities
-  Planned Neighborhood
-  Downtown
-  Parks, Open Spaces, and Env. Corridors
-  Possible Commercial or Light Industrial
-  Light Industrial
-  General Industrial
-  Extraction
-  Extraction and Disposal
-  Surface Water



General Area:  
John Paul Rd  
and STH 26

**Planned Mixed Use areas  
to consider for  
future amendment**



Future Land Use Map  
Janesville Comprehensive Plan



CITY OF JANESVILLE  
*Wisconsin's Park Place*

2/21/2023, D. Salmons, Planning Division  
S:\Projects\Planning\Comprehensive Plan\2022\PH1\_Areas\FUL\_Review\John Paul Rd.mxd



## **PLAN COMMISSION RESOLUTION**

---



PLAN COMMISSION RESOLUTION 2023-04

RECOMMENDING APPROVAL OF AN UPDATE TO THE COMPREHENSIVE PLAN  
FOR THE CITY OF JANESVILLE IN ROCK COUNTY, WISCONSIN

WHEREAS, §66.1001(4) of the Wisconsin Statutes establishes the required procedure for a local government to adopt and/or update a comprehensive plan, and §66.1001(2) identifies the required elements of a comprehensive plan; and

WHEREAS, the City Council-appointed Comprehensive Plan Steering Committee fostered public participation as required by §66.1001(4)(a) and (d) of the Wisconsin Statutes in updating the 2009 Comprehensive Plan and held public meetings and provided numerous other opportunities for public involvement prior to recommending approval of the Comprehensive Plan Update; and

WHEREAS, the Comprehensive Plan Update contains all required maps, elements and other descriptive materials as required under §66.1001 of the Wisconsin Statutes; and


WHEREAS, §66.1001(4)(b) of the Wisconsin Statutes grants the City of Janesville Plan Commission the authority to recommend that the City Council adopt an update to the Comprehensive Plan.

NOW, THEREFORE, BE IT RESOLVED that the Plan Commission of the City of Janesville hereby recommends that the City Council adopt an Ordinance to constitute official City approval of the attached Update to the City of Janesville Comprehensive Plan under §66.1001 of the Wisconsin Statutes.


Adopted this 6 day of November, 2023.

  
Kathy Voskuil  
Plan Commission Chair

Attest:

  
Duane Cherek  
Plan Commission Secretary

Approved as to form:

  
Wald Klimczyk  
City Attorney



## **CITY COUNCIL RESOLUTION**

---



ORDINANCE NO. 2023-882

An ordinance adopting an update to the *Comprehensive Plan* for the City of Janesville in Rock County, Wisconsin.

THE COMMON COUNCIL OF THE CITY OF JANESVILLE DO ORDAIN AS FOLLOWS:

WHEREAS, §66.1001(4) of the Wisconsin Statutes establishes the required procedure for a local government to adopt and/or update a comprehensive plan, and §66.1001(2) identifies the required elements of a comprehensive plan; and

WHEREAS, the City Council-appointed Comprehensive Plan Steering Committee fostered public participation as required by §66.1001(4)(a) and (d) of the Wisconsin Statutes in updating the 2009 Comprehensive Plan and held public meetings and provided numerous other opportunities for public involvement prior to recommending approval of the Comprehensive Plan Update; and

WHEREAS, the Comprehensive Plan Update contains all required maps, elements and other descriptive materials as required under §66.1001 of the Wisconsin Statutes; and

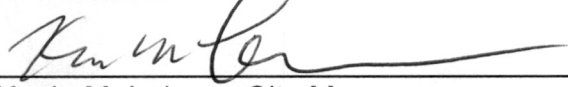
WHEREAS, pursuant to §66.1001(4)(b) of the Wisconsin Statutes, the City of Janesville Plan Commission at their November 6 meeting recommended that the City Council adopt the proposed update to the Comprehensive Plan; and

NOW, THEREFORE, BE IT RESOLVED that the City Council of the City of Janesville hereby adopts an Ordinance to constitute official City approval of the proposed Update to the City of Janesville Comprehensive Plan under §66.1001 of the Wisconsin Statutes.

**SECTION IV.** This ordinance shall take effect immediately upon adoption by the Common Council, the public health, welfare, peace, tranquility, good order, public benefit, and police power so requiring.

ADOPTED: December 11, 2023

APPROVED:

  
Kevin M. Lahner, City Manager

ATTEST:

  
Lorena Rae Stottler, City Clerk-Treasurer

Motion by: Miller				
Second by: Williams				
Councilmember	Aye	Nay	Pass	Absent
Benson	X			
Burdick	X			
Jackson	X			
Marshick	X			
Miller	X			
Neeno	X			
Williams	X			

APPROVED AS TO FORM:

  
Wald Klimczyk, City Attorney

Proposed by: Planning Division  
Prepared by: Planning Division

