



CITY OF JANESVILLE
Wisconsin's Park Place



East Memorial Drive Corridor Study

Community Engagement Forum

May 10, 2023



Welcome!

Project Team

City of Janesville

- Karissa Chapman Greer, Project Engineer
- Ahna Bizjak, Assistant City Engineer

Project Study Consultant – MSA

- Brian Huibregtse, PE, PTOE – Project Manager
- Eric Frailing, PE, PTOE – Traffic Engineer

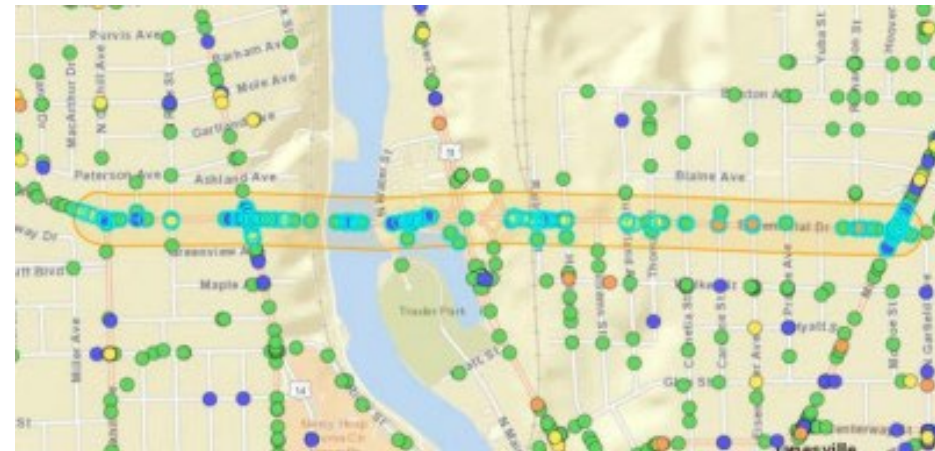


Reason for the Study

- Citywide Road Safety Plans
- Improve **Safety!**
 - Vehicles
 - Pedestrians
 - Bicycles

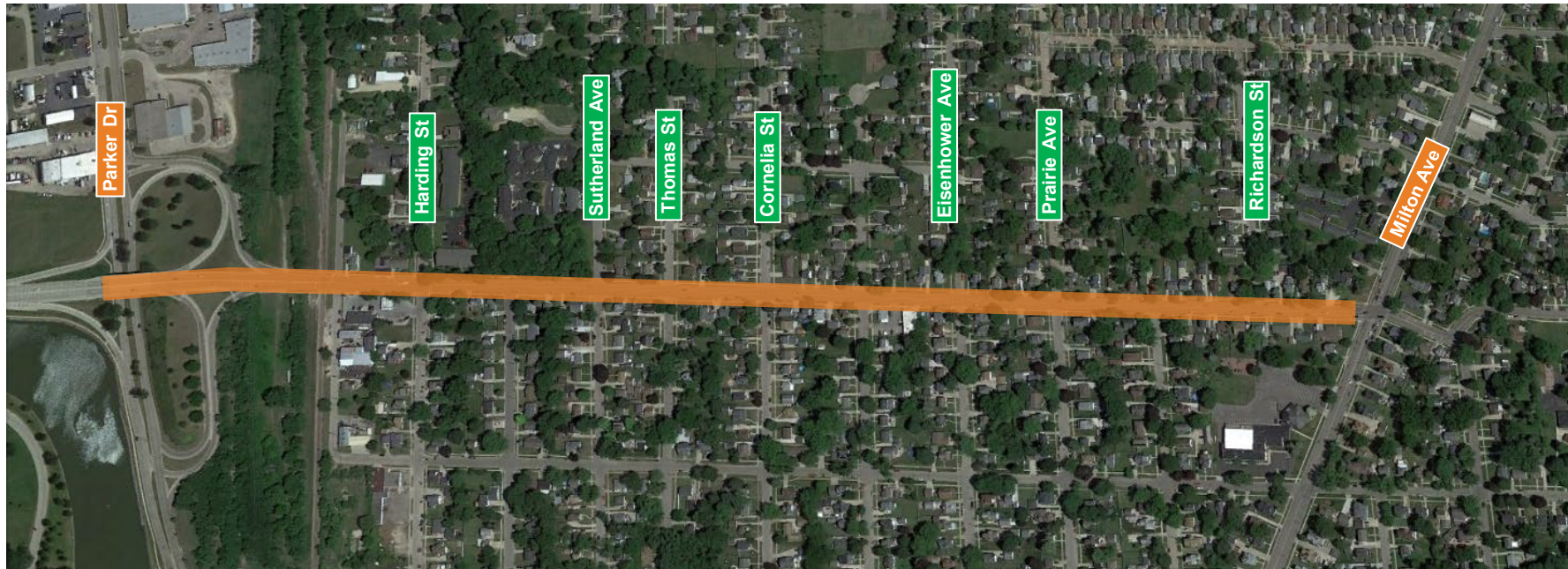
Goals for Today

- Get Feedback from the Community
 - Various alternatives
 - Pedestrian uses and possible enhancements
 - Unique characteristic from those who know the corridor best



East Memorial Drive Corridor Planning Study - Project Limits

- Limits: Parker Drive Ramps to Milton Avenue
- Intersection Counts Collection
 - Harding Street
 - Sutherland Avenue
 - Thomas Street
 - Cornelia Street
 - Eisenhower Avenue
 - Prairie Avenue
 - Richardson Street



East Memorial Drive Characteristics – Cross Section



East Memorial Drive Characteristics – Overview

Corridor Speed Data



Eastbound

32mph Average
36mph 85th Percentile

Westbound

32mph Average
35mph 85th Percentile

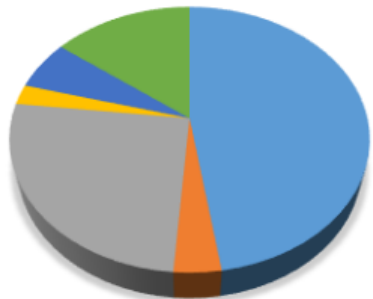
Corridor Safety Summary

January 2018 – January 2023

82 Total Corridor Crashes

380 Corridor Crash Rate (*Statewide Average: 335*)

65 Corridor Injury Rate (*Statewide Average: 39*)

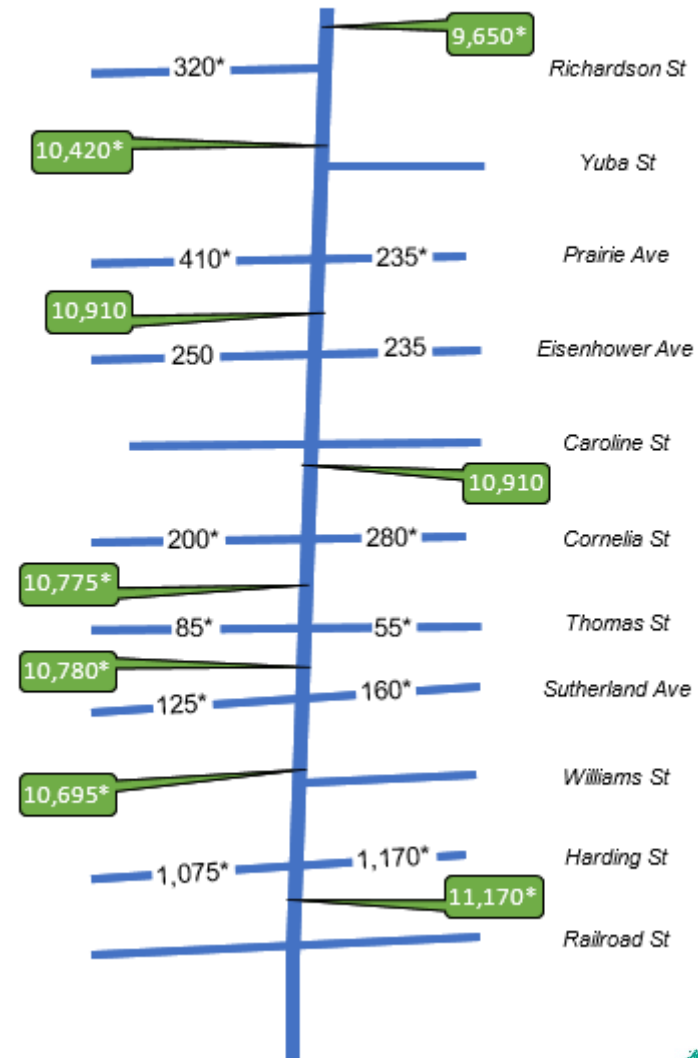


Crash Severity

- 1 Fatal (K)
- 3 Suspected Serious Injury (A)
- 10 Suspected Minor Injury (B)
- 11 Possible Injury (C)
- 55 Property Damage Only (O)

Existing Daily Traffic (2023)

Vehicles Per Day
 * estimated

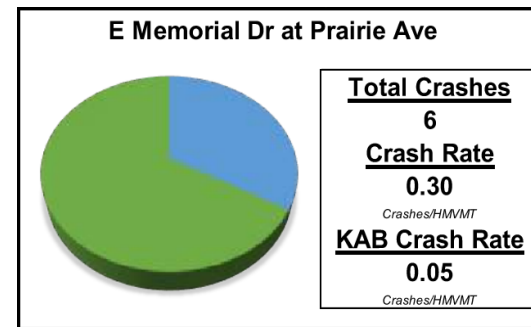
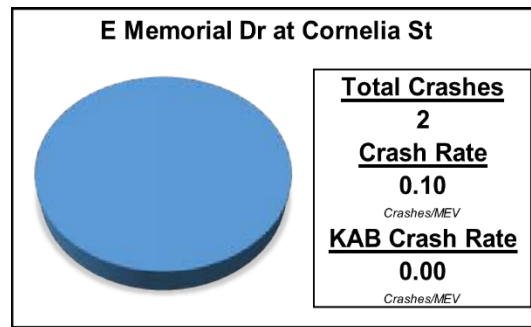
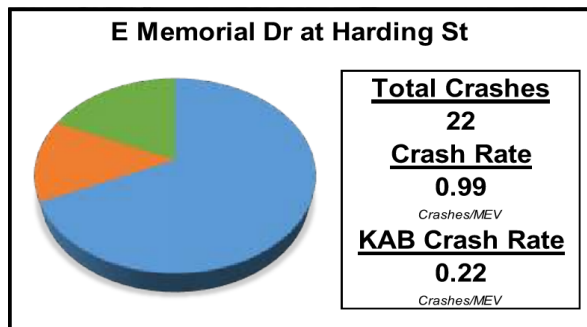
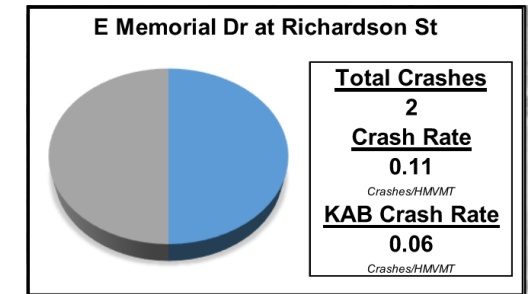
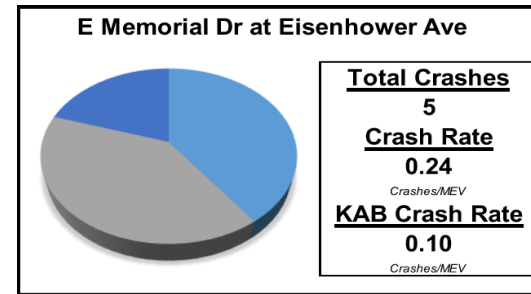
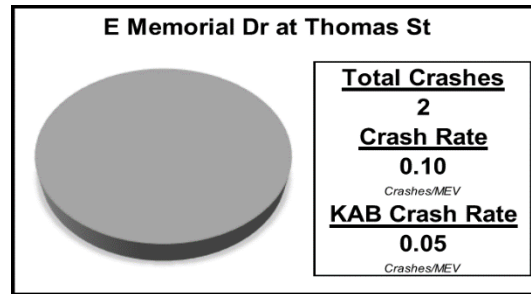
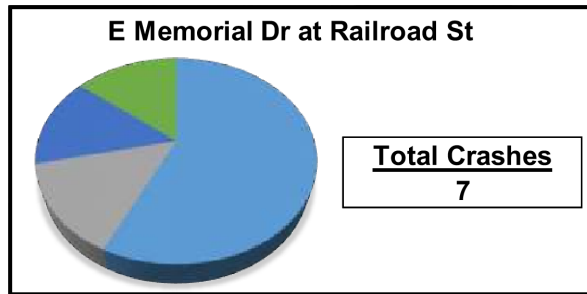
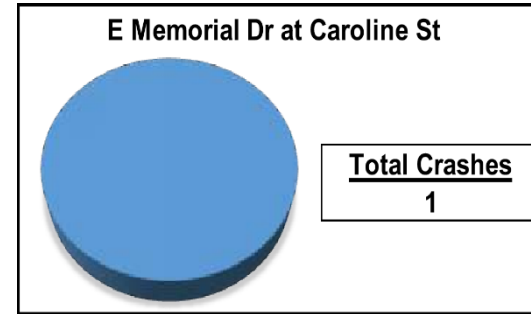
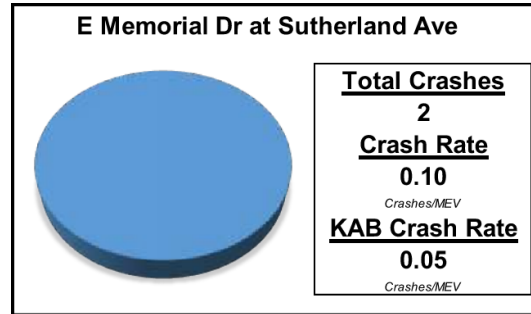
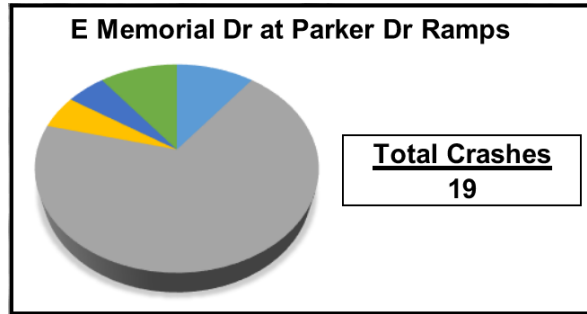


East Memorial Drive Characteristics – Intersection Crashes

Legend

Crash Types

- Angle (Front-to-Side)
- Head-On (Front-to-Front)
- Rear-End (Front-to-Rear)
- Rear-to-Rear
- Sideswipe
- Single Vehicle

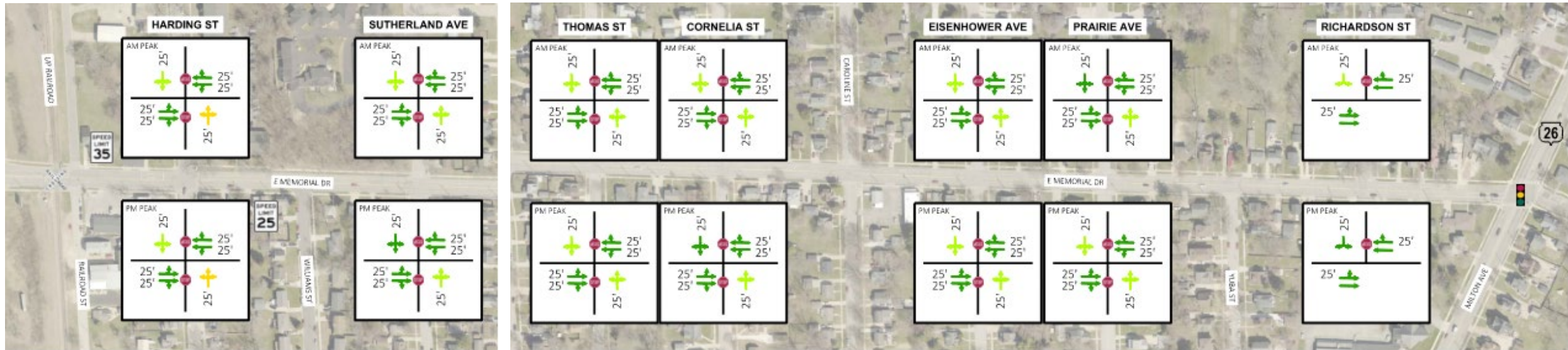


East Memorial Drive Characteristics – Traffic Operations and Delay

- 2043 – Four Lane Alternative (Existing Conditions)
 - Memorial Drive : LOS B or better, minimal queues
 - Sidestreets: Majority LOS C (Harding at LOS D)

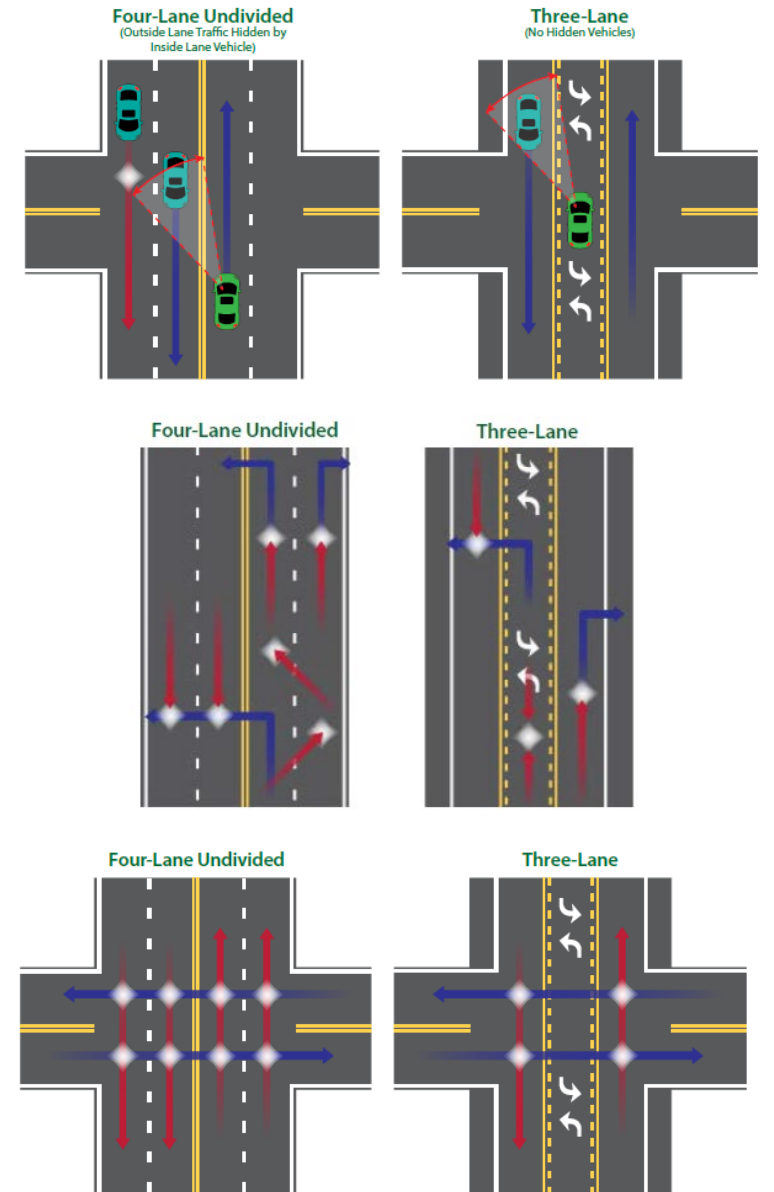
STOP CONTROL DELAY, SECONDS

0 - 10	LOS A	→	□
11 - 15	LOS B	→	□
16 - 25	LOS C	→	□
26 - 35	LOS D	→	□
36 - 50	LOS E	→	□
50 +	LOS F	→	□



East Memorial Drive - Alternative

- 3 Lane Alternative
 - One Westbound lane, One Two Way Left Turn Lane, One Eastbound lane
- Benefits of a 3 Lane Alternative
 - FHWA documented crash reduction of 19% to 47%
 - Reduce the number of conflict points between vehicles, particularly weaving
 - Reduced vehicle speed differential and slower speeds in some cases
 - Works well on corridor with driveways and closely spaced intersections
 - Possible enhancements for pedestrians and bicyclist
 - Reduce the number of lanes that pedestrians need to cross
 - Vehicular capacity of up to 17,500 vehicles per day



Images Courtesy of FHWA

East Memorial Drive – 3 Lane Alternative

3-Lane Alternative with Shoulders



3-Lane Alternative with Wide Shoulders



3-Lane Alternative with Wide Lanes

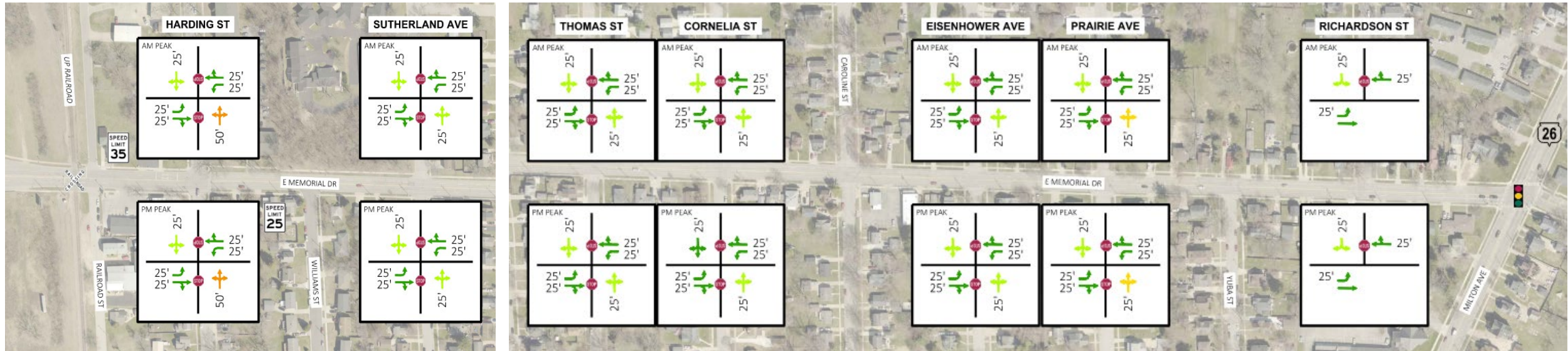


East Memorial Drive – Traffic Operations and Delay

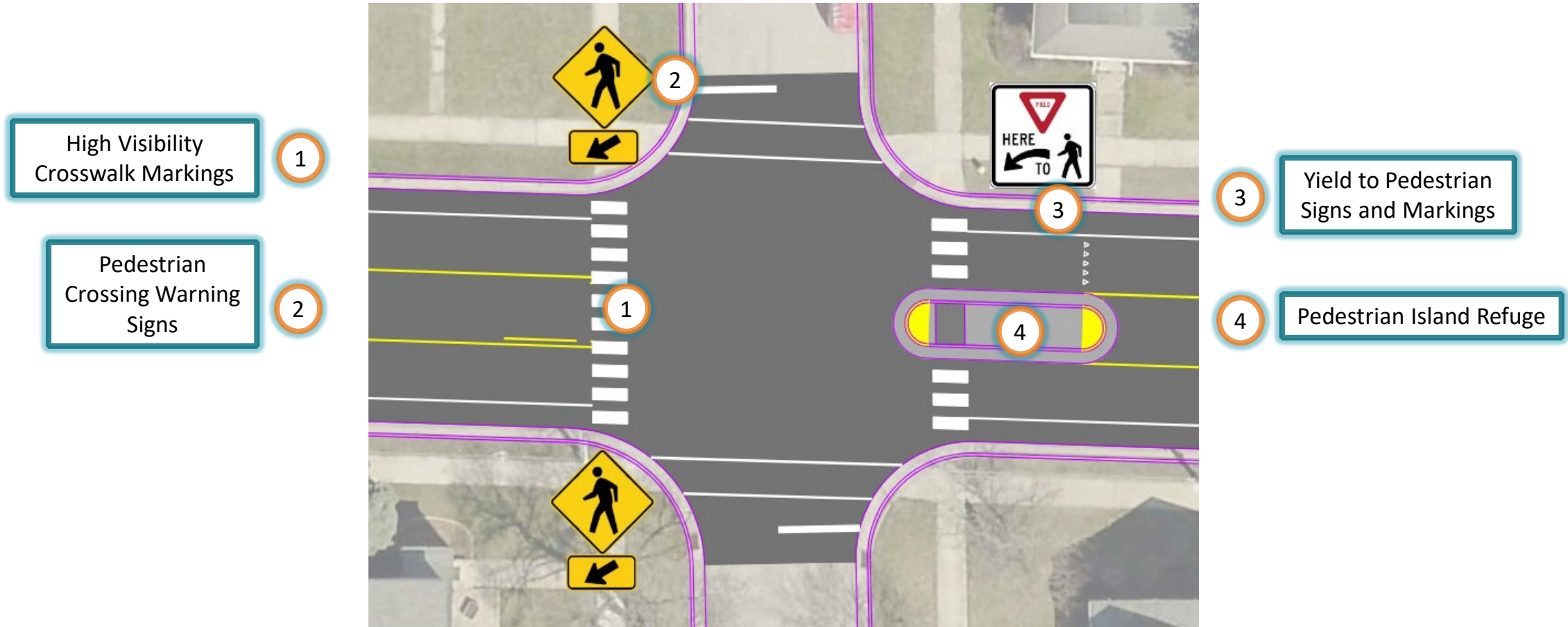
- 2043 – 3 Lane Alternative
 - Memorial Drive : LOS B or better, minimal queues
 - Sidestreets: Majority LOS C (Harding at LOS E, Prairie Ave at LOS D)

STOP CONTROL DELAY, SECONDS

0 - 10	LOS A	→	□
11 - 15	LOS B	→	□
16 - 25	LOS C	→	□
26 - 35	LOS D	→	□
36 - 50	LOS E	→	□
50 +	LOS F	→	□



East Memorial Drive – Pedestrian Enhancement Considerations



High Visibility
Crosswalk Markings

1

Pedestrian
Crossing Warning
Signs

2

Yield to Pedestrian
Signs and Markings

3

Pedestrian Island Refuge

4

Next Steps & Schedule

- Community Engagement Forum *May 10, 2023*
- Gather Feedback & Development Recommendations *May 2023*
- Submit DRAFT Recommendation to City *June 2023*
- Final Report *July 2023*
- Implementation *To Be Determined**

**City Investigating Funding Opportunities*



Open House

