

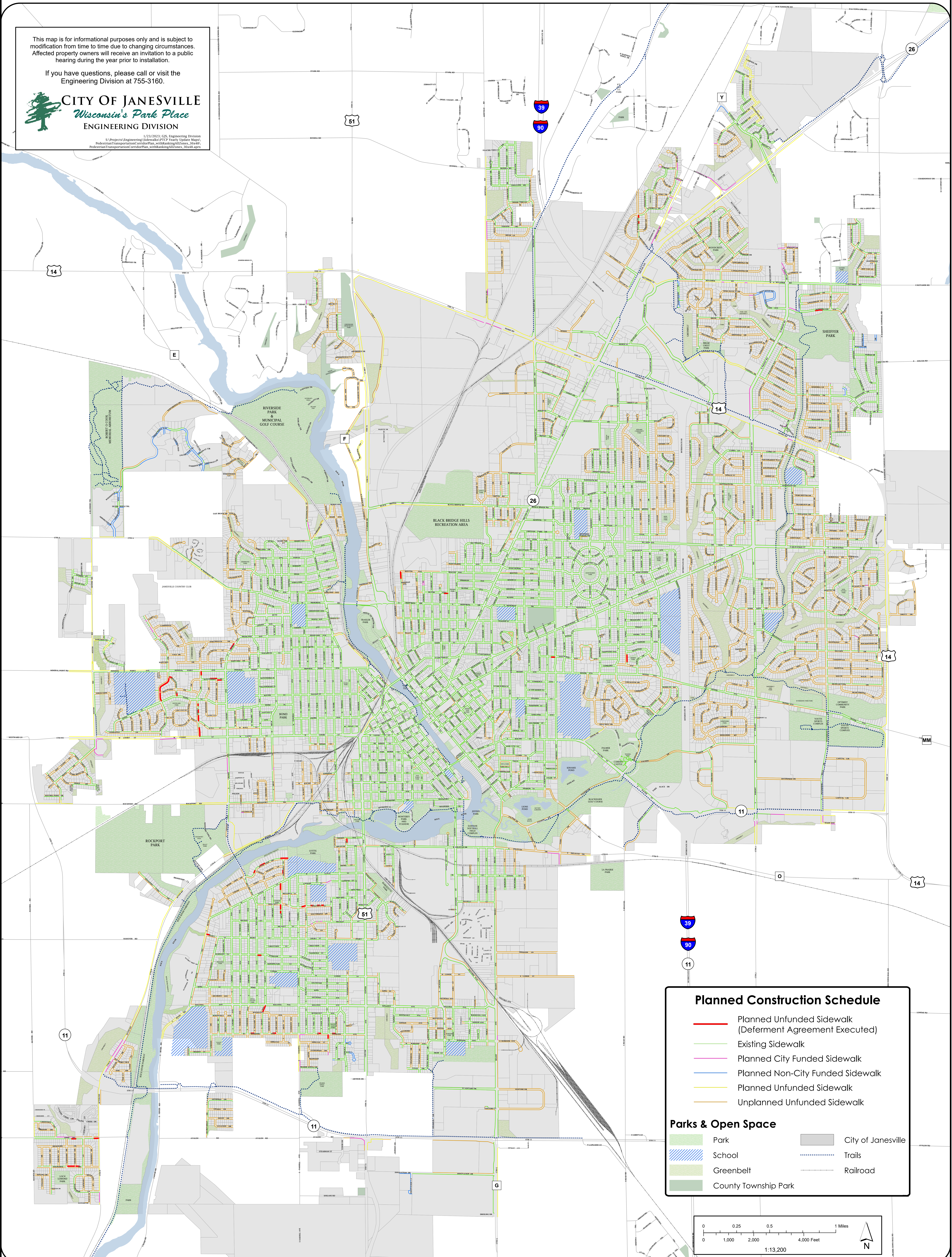
# Pedestrian Transportation Corridor Plan

This map is for informational purposes only and is subject to modification from time to time due to changing circumstances. Affected property owners will receive an invitation to a public hearing during the year prior to installation.

If you have questions, please call or visit the Engineering Division at 755-3160.



1/23/2023; GIS, Engineering Division  
 S:\Projects\Engineering\Sidewalks\PTCP Yearly Update Maps\Pedestrian Transportation Corridor Plan - with banking\AllIcons\_16x44x Pedestrian Transportation Corridor Plan - with banking\AllIcons\_16x44.aprx



## Planned Construction Schedule

- Planned Unfunded Sidewalk (Deferment Agreement Executed)
- Existing Sidewalk
- Planned City Funded Sidewalk
- Planned Non-City Funded Sidewalk
- Planned Unfunded Sidewalk
- Unplanned Unfunded Sidewalk

## Parks & Open Space

- Park
- School
- Greenbelt
- County Township Park
- City of Janesville
- Trails
- Railroad

