



**Janesville
Area MPO**



TRAIL USE REPORT

2022 - EXECUTIVE SUMMARY
WRITTEN BY DAVID SALMON AND WILL HENNING

2022 SURVEY HIGHLIGHTS



Janesville
Area MPO

2022 ANNUAL USAGE

94,942

TRIPS

Up from 44,508 trips in 2019
and 58,814 trips in 2016

TRAIL SATISFACTION

99%

'VERY GOOD' OR 'GOOD'

The trails are beloved by the
community

TRAIL SAFETY

93%

'VERY SAFE' OR 'SAFE'

Several trail and road crossings
were identified as being
stressful for users

USER RESIDENCE

84%

LIVE IN CITY OF JANESVILLE

4% live in Milton and 4% live in
Beloit

WALK TO SHOPS, FOOD

19%

'MONTHLY', 'WEEKLY' OR
'DAILY'

1 in 5 respondents walk to
visit retail establishments at
least monthly

BIKE TO SHOPS, FOOD

11%

'MONTHLY', 'WEEKLY' OR
'DAILY'

1 in 10 respondents bike to
visit retail establishments at
least monthly

2022 SURVEY METHODS



USER SURVEY

564

RESPONSES

449 completed online and 115 completed in-person

TRAIL USER

1272

OBSERVATIONS

Staff and volunteers observed bicyclists, pedestrians, and people rolling in other fashions on the trails

OBSERVATIONS AT

10

LOCATIONS

Covering N, S, W, E, and Central Janesville. Map on next page.

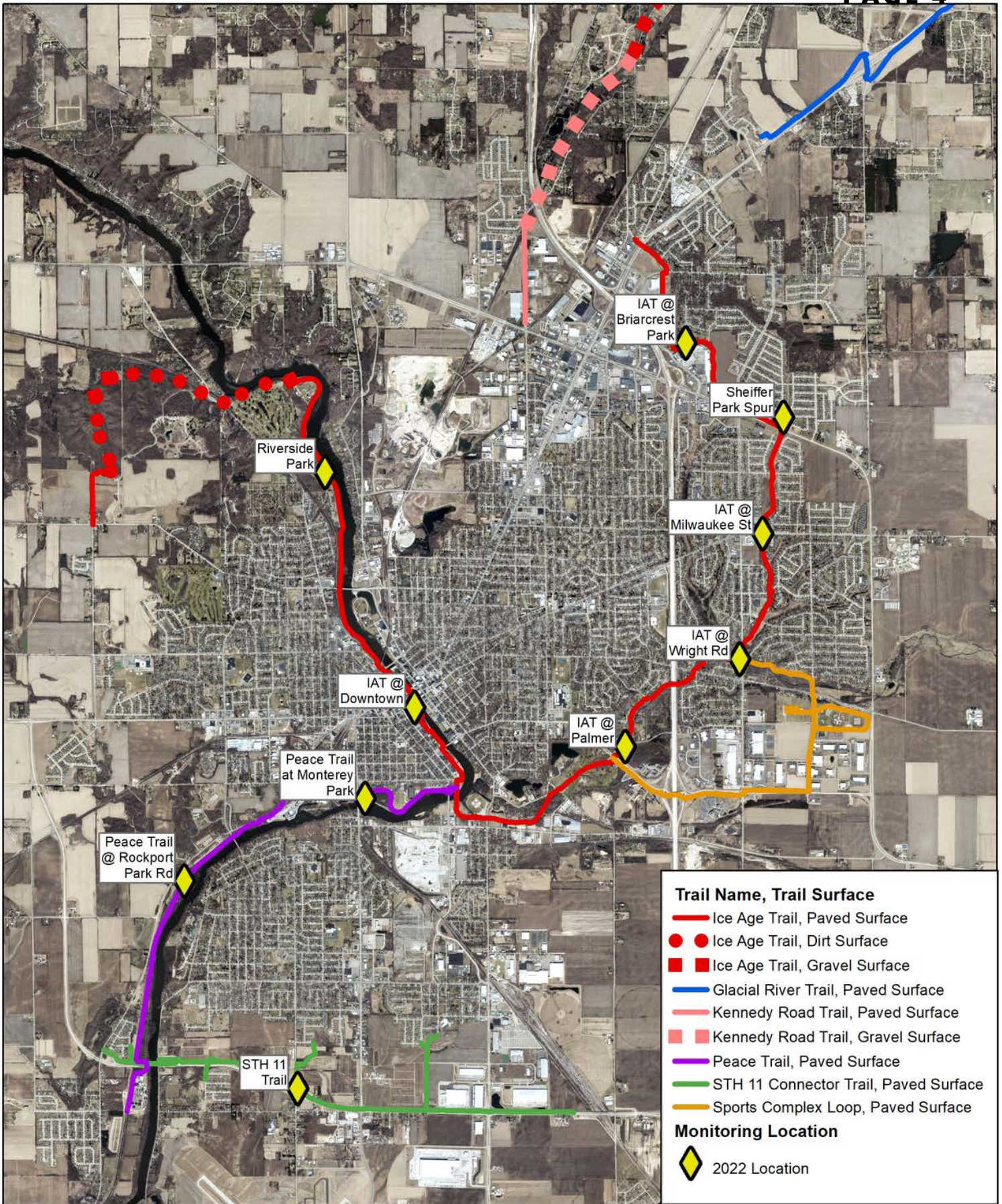
VOLUNTEER HOURS

40

1234

Volunteers helped collect survey and observation data





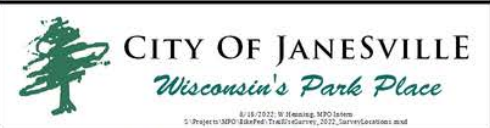
Trail Name, Trail Surface

- Ice Age Trail, Paved Surface
- Ice Age Trail, Dirt Surface
- - Ice Age Trail, Gravel Surface
- Glacial River Trail, Paved Surface
- Kennedy Road Trail, Paved Surface
- - Kennedy Road Trail, Gravel Surface
- Peace Trail, Paved Surface
- STH 11 Connector Trail, Paved Surface
- Sports Complex Loop, Paved Surface

Monitoring Location

- ◆ 2022 Location

Janesville Off-Street Trail Network Monitoring Locations



DISCLAIMER: This data is provided by the City of Janesville for informational purposes only. The City does not warrant or guarantee the accuracy or reliability of this data. The recipient of this data assumes any risk of its use for any purpose.

2022 SURVEY HIGHLIGHTS



Janesville
Area MPO

TRAIL USERS

80%

USE TRAILS WEEKLY

During Summer Months

TRAIL USERS

63%

USE TRAILS WEEKLY

Outside of
Summer Months

TRAIL USERS

20%

USE TRAILS DAILY

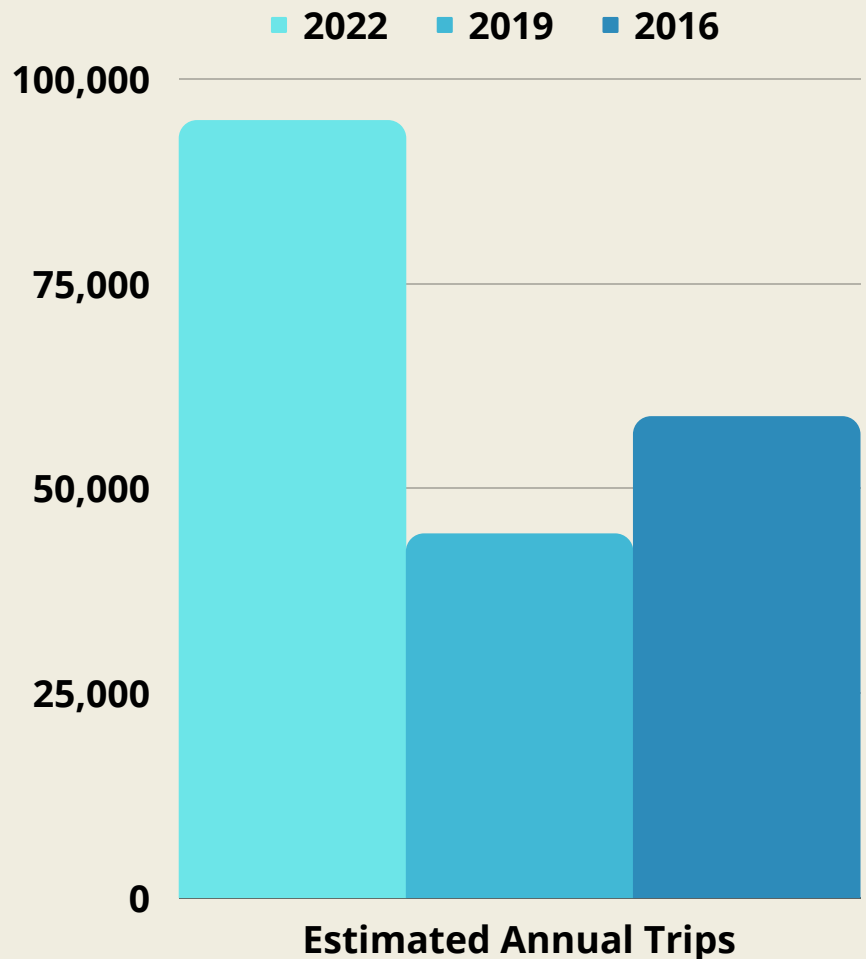
During Summer Months

TRAIL USERS

9%

USE TRAILS DAILY

Outside of Summer
Months



2022 SURVEY DETAILS



Janesville
Area MPO

Observed Age of Users	Total Users	Percentage of Total Users
Seniors	334	26%
Adults	676	53%
Teenagers	162	13%
Children	90	7%
N/A	10	1%
Total	1272	100%

Observed Gender of Users	Total Users	Percentage of Total Users
Male	733	58%
Female	523	41%
Other	16	1%

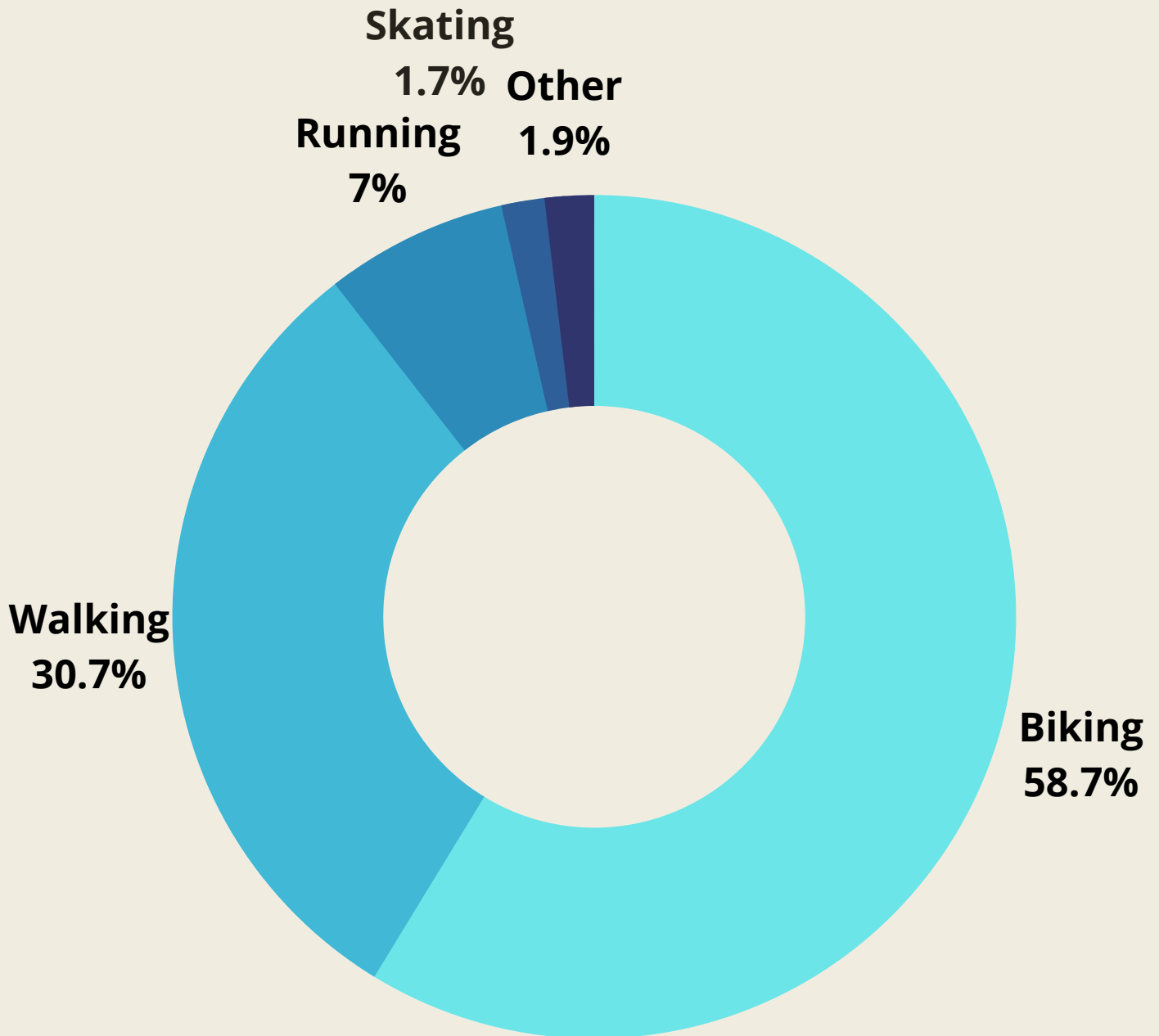
2022 SURVEY DETAILS



Janesville
Area MPO

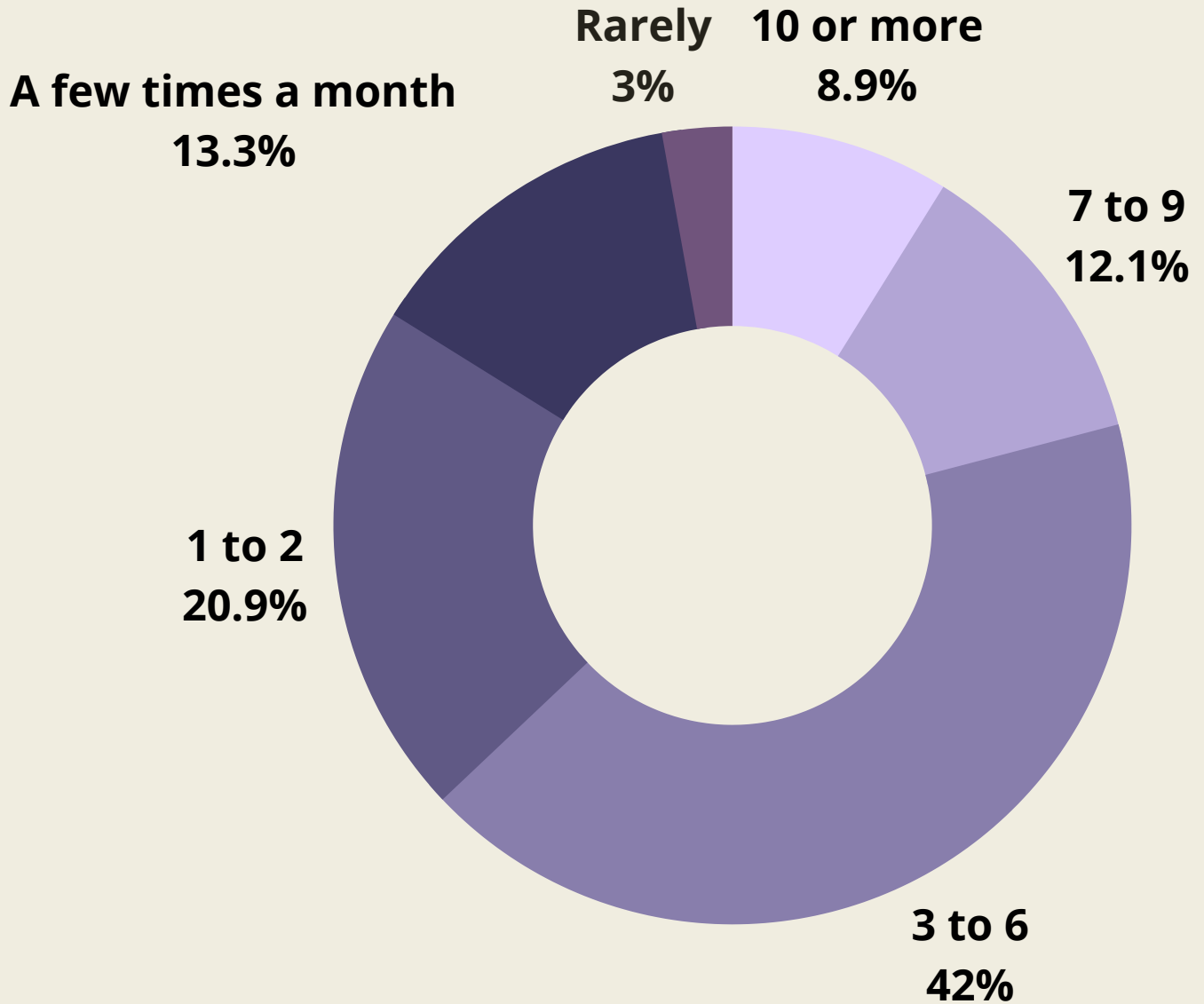
Race/Ethnicity of Survey Respondents	Total Respondents	Percentage of Respondents
White	542	96%
Latino/Hispanic	8	1.4%
Black/African American	2	0.4%
American Indian or Alaska Native	1	0.2%
Other (Multiple)	11	2%
Total	564	100%

2022 SURVEY DETAILS



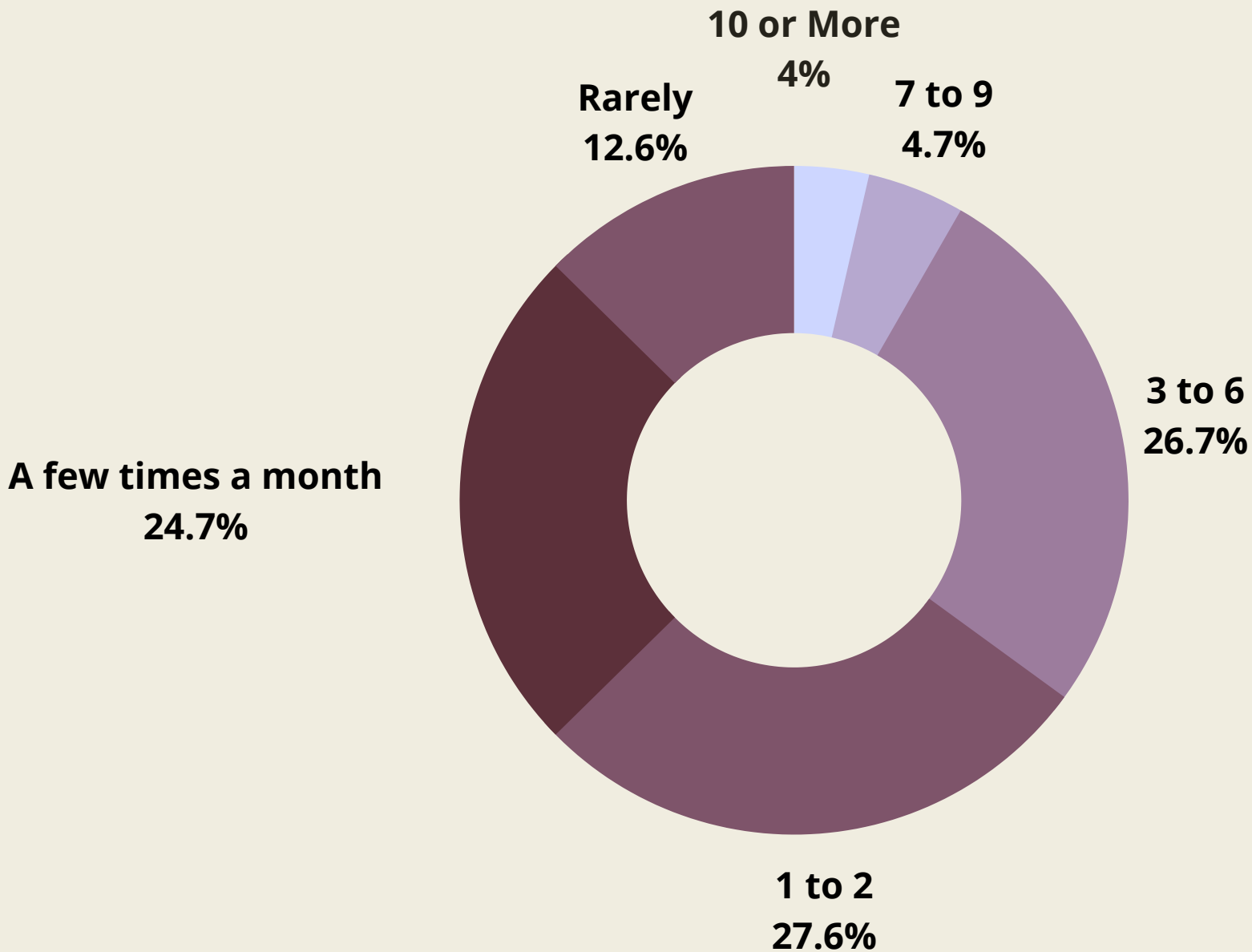
Observed Trail Activities

2022 SURVEY DETAILS



Respondent trail uses per week during Summer Months

2022 SURVEY DETAILS

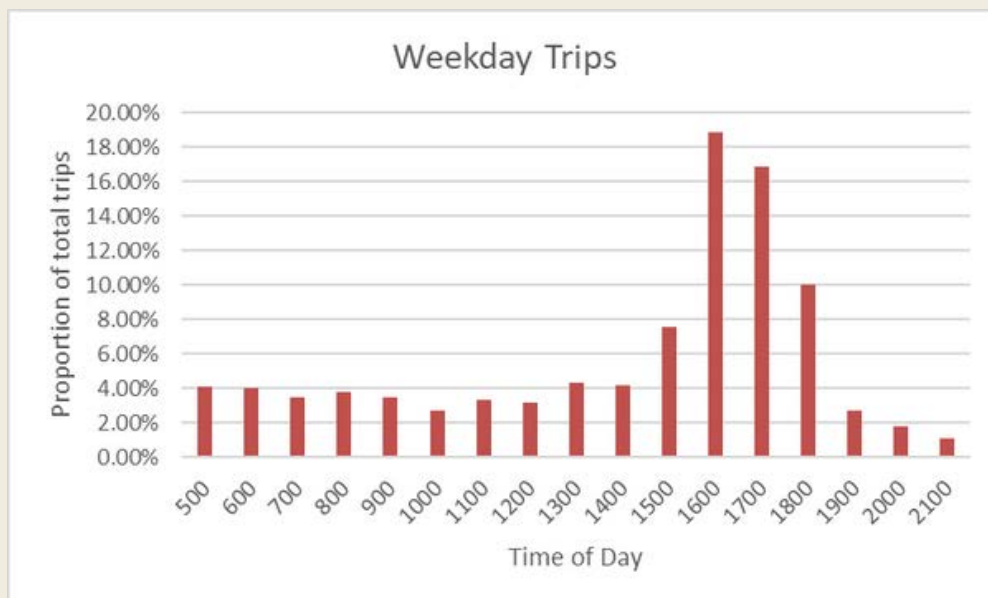


Respondent trail uses per week
outside of Summer Months

2022 SYSTEM PROFILE



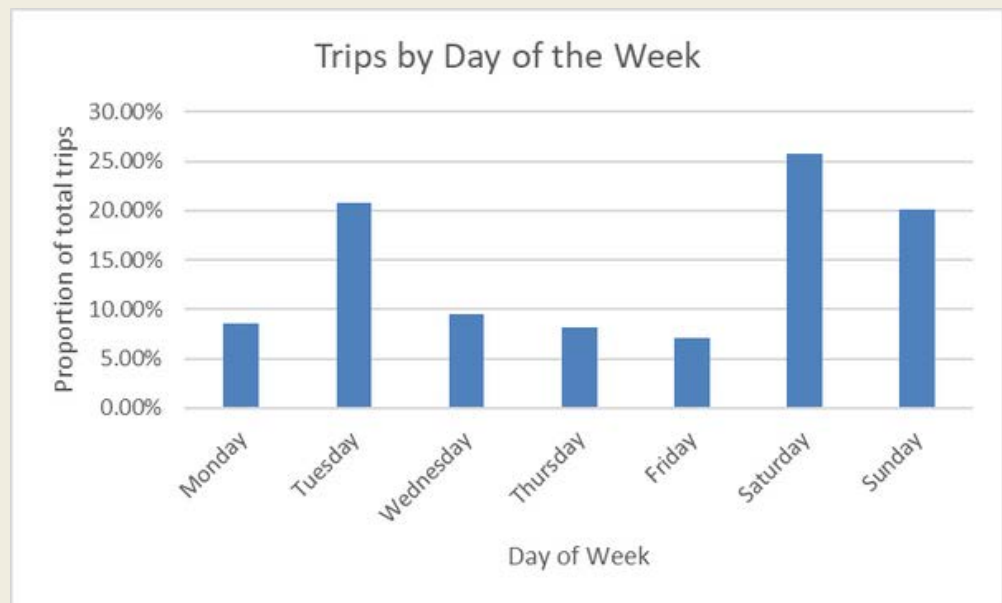
Using data provided by Strava Metro, MPO Staff created a profile of bicycle and pedestrian use within Rock County. This data was used to extrapolate short-term observations taken in summer 2022 into an annual estimate for the Janesville trail network.



2022 SURVEY DETAILS



Using data provided by Strava Metro, MPO Staff created a profile of bicycle and pedestrian use within Rock County. This data was used to extrapolate short-term observations taken in summer 2022 into an annual estimate for the Janesville trail network.





2022 THEME: CONNECTIVITY

Survey comments suggested a desire to *improve the connectivity of the trail network and on-street network with neighborhoods, community destinations, and other communities in the area*. This includes trail connections to Milton along John Paul Rd/Wright Rd, to Beloit along the Peace Trail, to the Westside of Janesville, to neighborhoods further away from trails, and to places to stop for food and drinks. *Adding more bike racks throughout the city and improving signage related to connections from neighborhoods to the trail* were noted as some ways to accomplish this as well as adding additional system-wide maps at natural rest areas.

Additional suggestions included:

- Improving low stress connections from neighborhoods to trail network
- Improving overall network connections to everyday places
- Improving network connections to the region
- Improving signage related to neighborhood connectivity
- Providing additional system maps at natural rest areas
- Increasing the amount of bike racks at destinations throughout the City



2022 THEME: CONNECTIVITY

WRITTEN COMMENTS

The bike lanes on Pontiac are a big improvement. It would be good to see bike paths or bike lanes that connect other residential areas to the trail system.



A dedicated paved trail that loops the city. Connecting the Northside to the Westside to the Southside & Eastside to Southside.



More signage for areas of the trail that go through neighborhoods. It is unclear where to pick it back up.





2022 THEME: SAFETY

Users overwhelmingly indicated they feel safe or very safe while using the trails. *Many users also indicated they do not feel safe where the trail crosses roads and feel stress from auto traffic where the bicycle network runs on-street.* Crossings at *W Centerway St, Beloit Ave, and Wright Rd* were cited multiple times as being particularly stressful and unsafe. Additionally, the on-street corridor that runs along *John Paul Rd* between the *Ice Age Trail* and *Glacial River trail* was also identified as being particularly stressful and unsafe. *During the wintertime, users indicated the trails can be hazardous due to the limited amount of plowing across the system.*

Additional suggestions included:

- Improving safety at road crossings with better signage, and clearer indication of who has right of way
- Continued clearing and sweeping of the trails and bike lanes
- Improving segments of trail that have experienced cracking and settling of the trail pavement
- Reducing hazards during wintertime
- Providing improvements or alternatives to dangerous road segments without sufficient shoulder width
- Increasing safety during the early morning and night time with emergency call boxes and more lighting along the trail
- Addressing concerns about the speed of users at busy segments of the trail



2022 THEME: SAFETY

WRITTEN COMMENTS

I'd love to see the trails be plowed in the winter months. I know a lot of older residents use the trails to walk for exercise and it can be dangerous in the winter



I wonder if lighting and maybe even an emergency call box might make it feel safer



Drivers do NOT stop when we are at the edge of the street trying to cross (especially at Wright Road near Skyview Drive, at Ruger and Greendale by the Community Day Care Center, and at S. Main Street by Dawson Field.





2022 THEME: INCLUSION

One theme that emerged from the survey was the desire for a more inclusive trail network for users of all types and abilities. Users expressed confusion and frustration with dog restrictions, with conflicts between more active and more passive users, with a perceived lack of available restrooms and water fountains, and with the limited access to the trails from November through March. There was a desire to provide enhanced pedestrian experiences with walking loops, a better unpaved running network, and more mountain bike trails.

Additional suggestions included:

- Addressing limited access from November through March
- Limited allowance of dogs reduces some users access who feel safer having their dog present
- Improving connectivity to the trail network for less mobile users
- Improving on existing low impact running network
- Creating loops and links that provide an enhanced pedestrian experience
- Providing better skateboarding facilities
- Providing additional off-road biking trails such as pump tracks and jump tracks



2022 THEME: INCLUSION

WRITTEN COMMENTS

A place to fill water bottles, rest rooms access. A map on a web site with rest rooms locations and a copy of the trail map.



I'd like to see more safe public bicycle racks near businesses in plain site, where you could feel ok with locking your bike to use a business. I'd like to see more community education encouraging people to bicycle/walk outside the typical recreational only.



While the bike trails are nice, Janesville isn't a very nice city to bike on street in for being a "bike-friendly" city. Traffic is fast, aggressive, and I feel a bit exposed sometimes biking on street.





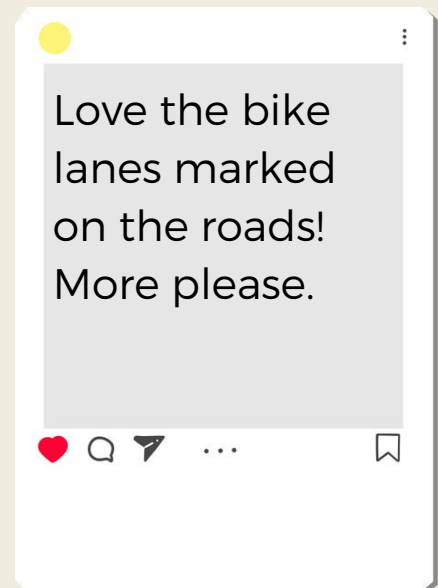
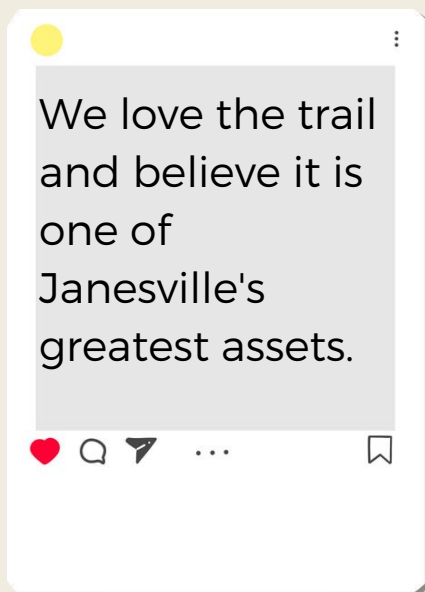
2022 THEME: QUALITY OF LIFE

Many users indicated that the trails are one of the reasons they moved to Janesville, and an invaluable asset for living a healthier, more active lifestyle.

Additional suggestions included:

- Limited access to drinking water fountains
 - Limited access to bathroom facilities
 - Lack of trash cans/dog poop containers
-

WRITTEN COMMENTS





ACKNOWLEDGEMENTS

Thanks to William Henning for helping to lead efforts on the survey and co-authoring this report. Thanks to Ellen Toberman and Chase Edwardson for spending part of their summer internships helping collect data for this survey.



Additionally, this survey would not have been possible without the ongoing support and assistance from the Ice Age Trail Alliance of Rock County, the Velo Club, and Rock River Trail Coalition.

Special Thanks to Dean and Jayne Paynter, Dennis James, and Tim Weege for volunteering their time on the trails counting users and collecting survey responses.

This Survey was made possible, in part, thanks to funding from the Federal Highway Administration, Federal Transit Administration, and U.S. Department of Transportation. The views of the authors (or agency) expressed herein do not necessarily state or reflect those of the U.S. Department of Transportation.