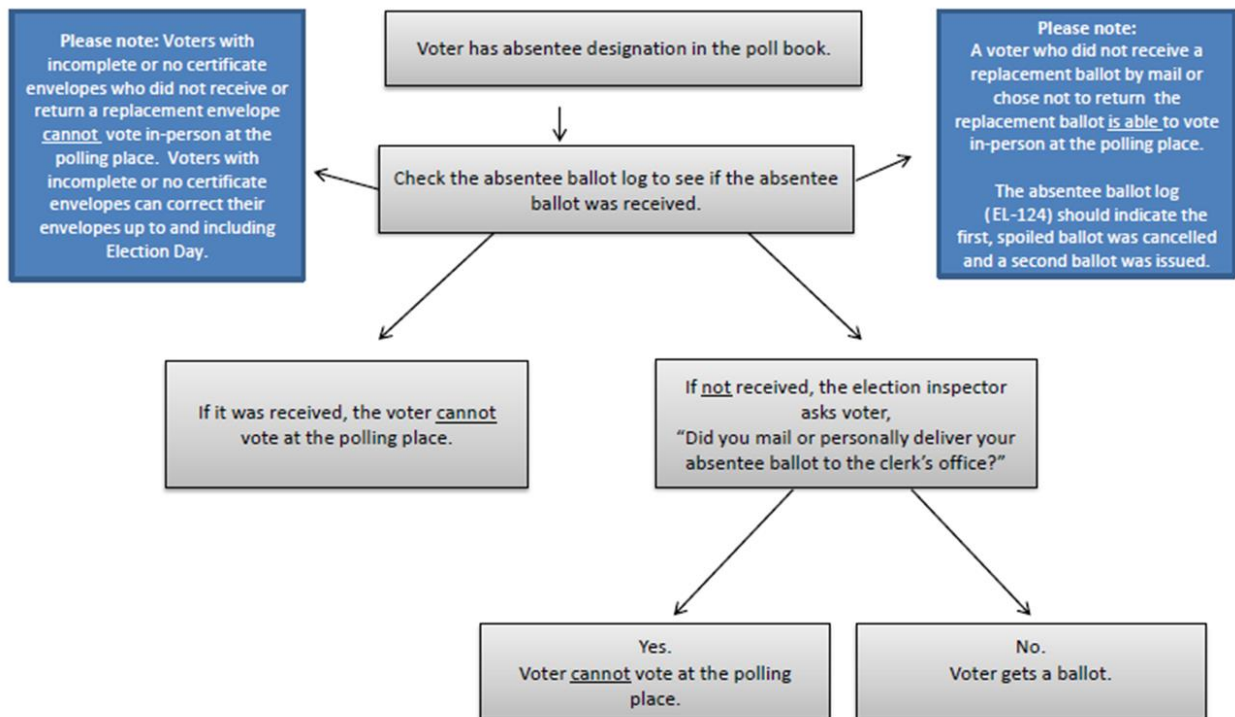


- c. The original certificate envelope is then destroyed.
- d. The election inspector documents that a correction was made, and the ballot accepted on the Absentee Ballot Log (EL-124).

Wis. Stat. § 6.88(3)(b).

Absentee Voters at the Polling Place



Election inspectors should follow these procedures if a voter with an absentee designation in the poll book comes to the polling place to vote on Election Day, in addition to the procedures outlined in the Electors section.

Municipalities must track absentee ballots on the pre-printed poll list. The clerk shall also provide each polling place an Absentee Ballot Log (EL-124).

The absentee notation on the pre-printed poll list indicates that an absentee ballot was issued to the voter. This does not indicate that the absentee ballot was returned.