



CITY OF JANESVILLE

*Wisconsin's Park Place*

Parks & Recreation

# FALL + WINTER 2024-2025 Activity Guide



You're never too old  
to come out and play!



[www.janesvillewi.gov/register](http://www.janesvillewi.gov/register)  
Register Online & Follow Us!





# CITY OF JANESVILLE

## Wisconsin's Park Place

### Parks & Recreation Divisions

#### Parks & Recreation Divisions

18 N. Jackson Street (Physical)  
 PO Box 5005 (Mailing)  
 Janesville, WI 53547-5005  
 (608) 755-3030

[www.janesvillewi.gov/recreation](http://www.janesvillewi.gov/recreation)  
[www.janesvillewi.gov/parks](http://www.janesvillewi.gov/parks)

#### OFFICE HOURS:

Monday-Friday ..... 7:30 am-4:30 pm

#### Important Phone Numbers

Ice Arena ..... (608) 755-3015  
 Senior Center ..... (608) 755-3040  
 Program/League  
 Rainout Line ..... (608) 447-4007  
 Ext. 3: Adult Men's Basketball Leagues  
 Ext. 6: Adult Volleyball Leagues  
 Ext. 10: Family Programs  
 Ext. 15: Middle School Rec Nites  
 Ext. 23: Start Smart



#### Inclement Weather

In the event of inclement weather, programs may be cancelled, and program participants should use our Rainout Line to find the status of their program. Call the number above, or sign up for email and text alerts here: <https://rain-outline.com/search/dnis/6084474007>, or download the free Android and iPhone Rainout Line app in the App Store or Google Play. Once the free app is downloaded, search for the City of Janesville Recreation Division. Scan the above QR code.

Adult sports leagues will also post on [www.teamsideline.com/janesville](http://www.teamsideline.com/janesville).

Like Janesville Parks & Recreation on Facebook:



### STAFF

#### RECREATION DIVISION

Emilee Struebin, *Administrative Assistant I*  
[struebine@ci.janesville.wi.us](mailto:struebine@ci.janesville.wi.us)  
 Shelley Slapak, C.P.R.E., *Recreation Director*  
[slapaks@ci.janesville.wi.us](mailto:slapaks@ci.janesville.wi.us)  
 Nicole Yost, C.P.R.P., *Recreation Supervisor & Ice Arena Manager*  
[yostn@ci.janesville.wi.us](mailto:yostn@ci.janesville.wi.us)  
 Sara Helgeson, *Recreation Programmer*  
[helgesons@ci.janesville.wi.us](mailto:helgesons@ci.janesville.wi.us)  
 Elaena Noffsinger, AFO, LGIT, *Recreation Programmer*  
[noffsingere@ci.janesville.wi.us](mailto:noffsingere@ci.janesville.wi.us)  
 Linda Kleven, *Senior Center Manager*  
[klevenl@ci.janesville.wi.us](mailto:klevenl@ci.janesville.wi.us)  
 Vicki Beduze, *Senior Center Programmer*  
[beduzev@ci.janesville.wi.us](mailto:beduzev@ci.janesville.wi.us)

#### PARKS DIVISION

Cullen Slapak, C.P.R.E., *Parks Director*  
[slapakc@ci.janesville.wi.us](mailto:slapakc@ci.janesville.wi.us)  
 Jason Schlimgen, *Parks Supervisor*  
[schlimgenj@ci.janesville.wi.us](mailto:schlimgenj@ci.janesville.wi.us)  
 Kirk Anderson, *Central Parks Crew Leader*  
 Andy White, *Eastside Parks Crew Leader*  
 AL Peterson, *Westside Parks Crew Leader*

#### PARKS & REC ADVISORY COMMITTEE

Steve Knox, *Chairperson*  
 Nicolas Thompson, *Vice Chairperson*  
 Donald "Jeff" Bowen  
 Jason Brown  
 Brittany De La O  
 Dennis James  
 Tasha LaVeen  
 Kristin Mickelson  
 Dean Paynter  
 Ann Pedder Reilly  
 Michael Jackson, *Councilmember*

Meets 2nd Tuesday every other month, 6pm, starting in January

### MISSION STATEMENT

The mission of the Parks and Recreation Divisions is to provide, maintain, and promote the development of space, facilities, organization, leadership, and programs to meet the varied leisure needs of the community.

### VISION STATEMENT

To provide a vibrant and comprehensive recreation environment where all people can participate in active and passive recreational opportunities which provide enjoyment, entertainment, stimulation, and a sense of community pride.

### TABLE OF CONTENTS

Registration Information .....	3
Family Activities .....	4
Enchanted Forest & Hollywood Hayride .....	6
Trunk or Treat .....	7
Youth Programs .....	8
Adult Programs .....	9
Equipment Rental Items & Facility Rentals.....	10
Parks .....	11
Janesville Senior Activity Center .....	12
Janesville Ice Arena .....	13
Janesville's Jolly Jingle .....	14
City of Janesville .....	Back Cover

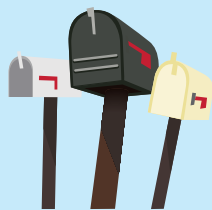
The City of Janesville Recreation Division is always looking for future sponsorships and community partnerships to help better our programs. If you are interested, please contact us at (608) 755-3030 or [recreationmail@ci.janesville.wi.us](mailto:recreationmail@ci.janesville.wi.us).

# 4 Easy Ways To Register

## 1 MAIL

Mail your completed registration form with payment to:

Janesville  
Recreation Division  
PO Box 5005  
Janesville, WI 53547-5005  
Go to [www.janesvillewi.gov/recregistration](http://www.janesvillewi.gov/recregistration) to access the registration form.



## 2 DROP BOX



Fill out a registration form (located at [www.janesvillewi.gov/recregistration](http://www.janesvillewi.gov/recregistration)), include payment, and put it in our drop box at the Recreation Office at any time. Our 24-hour secured drop box is located at the Wall Street entrance of City Hall.

## 3 IN PERSON



Registrations are accepted in person at our office located on the 1st floor of City Hall (18 N. Jackson Street) Monday through Friday from 7:30 am to 4:30 pm.

## 4 ONLINE



Go to [www.janesvillewi.gov/register](http://www.janesvillewi.gov/register) or scan the above QR code to register online. If you don't have an account, you will be asked to create one at this time using a valid email address. Please call us if you need us to reset your login and password. There is a convenience fee to use this service and this fee is charged per receipt.

Payment can be cash, check (made payable to the City of Janesville), Visa, or MasterCard. Your MC or VISA number, expiration date, 3-digit CVV code, and signature must be listed clearly on the registration form.

## AMERICANS WITH DISABILITIES ACT

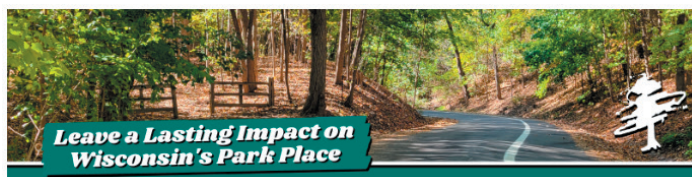
The City of Janesville Recreation Division complies with the Americans with Disabilities Act (ADA), which prohibits discrimination on the basis of disability. We will make reasonable accommodations to programs and services to enable inclusive participation. If a special accommodation is necessary to participate in one of our programs, please indicate when registering and contact our office at (608) 755-3030 in advance of a program.

## CLASS/PROGRAM CANCELLATIONS

Programs will be cancelled by the City of Janesville Recreation Division if the indicated minimums are not met three business days before the start of the program or by their specified deadline. Register early as some programs fill quickly and others may be cancelled if we do not meet minimums.

## PARKS AND RECREATION LEGACY FUND

Leave a lasting gift to the community through the Parks and Recreation Legacy Fund established through the Community Foundation of Southern Wisconsin. The purpose of this fund is to accept donations to support City of Janesville parks, playgrounds, recreation facilities, and related projects that benefit the community. To donate to the fund, visit: [www.janesvillewi.gov/prlegacyfund](http://www.janesvillewi.gov/prlegacyfund).



## PHOTO CREDIT

A staff photographer may be at various programs to take pictures. Please contact our office if you or your child should not be photographed.

## REFUNDS

All refunds will be reduced with cancellation fees in the amount of \$20 per session for camps and \$10 for all other programs.

### **Full refunds will be given under these circumstances:**

- Class/program cancelled by the City of Janesville Recreation Division
- Refund must be requested at least one week (7 days) prior to the start of program (less cancellation fee)

### **50% refund (less cancellation fee) will be given under these circumstances:**

- Refund requested less than one week (7 days) before start of program. Refund must be requested prior to or by the start date of the program. No refunds after program start date.

We cannot refund the online processing fee (for online registrations only) as it goes to the registration site, ActiveNet.com.

## VOLUNTEER OPPORTUNITIES

The City of Janesville Recreation Division is always looking for volunteers on a year-round basis to help at special events and programs that serve youth, teens, adults, and seniors, and at indoor Recreation facilities. If individuals or groups are interested in volunteering, please complete the volunteer interest form found on our volunteer page at [www.janesvillewi.gov/volunteer](http://www.janesvillewi.gov/volunteer). Click the link for the "volunteer interest form". When completing the form, for number 2, be sure to check "Recreation Division Special Events and Programs" and/or "Parks Division". As volunteer opportunities arise, we will contact you based on your availability.

**LITTLE FREE SLED SHED & PUBLIC SLEDDING HILLS**



When the weather gets snowy, watch for our Little Free Sled Sheds to appear at four public sledding hills: Ardon Park, Riverside Park and Golf Course, Lustig Park, and Sheiffer Park. Feel free to borrow a sled and return it when you are done. Donations accepted.



**Sledding Hills**

- Ardon Park:** 2201 Refset Drive (Located on Liberty Lane, behind Uptown Janesville)
- Palmer Park:** 2501 Palmer Drive
- Riverside Park and Golf Course:** 2200 Parkside Drive
- Lustig Park:** 1500 River View Drive
- Rockport Park:** 2801 Rockport Road
- Sheiffer Park:** 3600 Wright Road (Parking lot is at 4500 Huntington Ave., a short walk from the sledding hill)



Hills are not supervised or lighted. Other city parks not listed can be used for sledding but may have limited parking. Sledding can be hazardous, caution is advised. Always ensure you have a wide and unobstructed path to travel.

**SANTA CLAUS CALLS**



Every December Santa makes phone calls to the good little girls and boys in Janesville. Calls could come from Santa, Mrs. Claus, or Santa's elves, as they are all busy in Santa's workshop. A special registration form is required and can be found at [www.janesvillewi.gov/recreation](http://www.janesvillewi.gov/recreation) in early November. Your child will be delighted to receive their very own phone call and talk with the North Pole directly. Calls from Santa's Workshop are co-sponsored by the Janesville Lions Club.



Date	Time	Fee	Registration Deadline
Wednesday, December 11	6-7:30 pm	Free	December 8

**ROCKPORT SUPERSKI/HIKE**



Bundle up and enjoy a candlelit ski or hike in Rockport Park. Enjoy a bonfire, hot dogs, hot cider, hot chocolate, and smores. Event sponsored by Friends of Rockport Park.

Date	Location	Time	Ages	Fee
Saturday, February 8	Rockport Park	6-8 pm	All	Free

**CAMPFIRE GHOST STORIES**



Join library storytellers around the campfire for an evening of ghostly tales appropriate for ages 8 up to adult listeners (all welcome - tales will get scarier as the evening progresses – gentle listeners may opt out at any point). City Parks and Recreation staff will stoke the fire and provide seasonal treats. No registration necessary. In case of inclement weather, this program will be cancelled and will not be rescheduled. For more information, please go to [www.hedbergpubliclibrary.org](http://www.hedbergpubliclibrary.org) or call (608) 758-6585.



Date	Location	Time	Ages	Fee
Thursday, October 24	Palmer Park Hilltop Pavilion Bonfire Pit	6:30-7:30 pm	8+	Free

**HEART MY YARD**

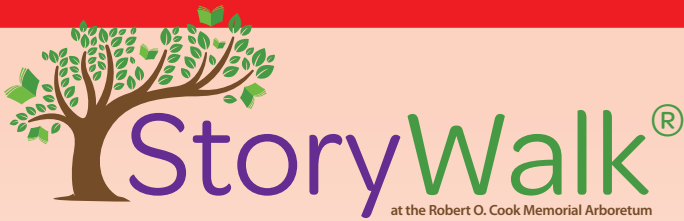
Have your yard filled with 20 plastic hearts with surprises inside for the kids to find. Our staff will leave a special note on your door when they have been hidden on either February 13 or 14. Hearts may be reserved to City of Janesville residents only through February 4 or while supplies last and cost \$50. Register at [www.janesvillewi.gov/register](http://www.janesvillewi.gov/register) or at the Janesville Recreation Division office.



**HEART MY YARD TO GO**

Prefer to hide the hearts yourself or inside your house? Then pick up your 20 pre-filled hearts at our office Wednesday, February 12 through Friday, February 14 between 7:30 am-4:30 pm. Hearts may be reserved through February 4 or while supplies last and cost \$35. Register at [www.janesvillewi.gov/register](http://www.janesvillewi.gov/register) or at the Janesville Recreation Division office.





**PARTNERSHIP PROGRAM** **FREE**

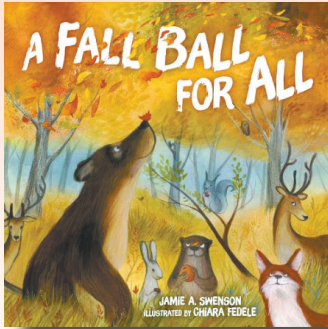
In partnership with:



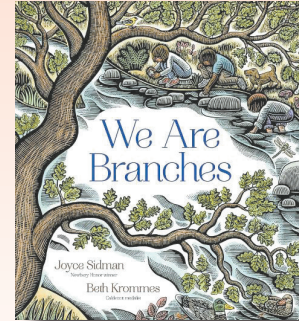
The StoryWalk® is made possible by a generous grant from



The StoryWalk® is in the Robert O. Cook Memorial Arboretum, located at 3550 W. Cty. Hwy. A along the Jolyn Beeman Trail. Enjoy nature and read the story as you walk .25 miles down the trail. Seasonal nature themed stories are changed out the first week-day of the official season start.



***A Fall Ball for All***  
by Jamie A. Swenson  
Monday, September 23 –  
Friday, December 20



***We Are Branches***  
by Joyce Sidman  
Friday, December 20 –  
Thursday, March 20

**FALL SCAVENGER HUNT**

**FREE**

Let's go on a Fall Scavenger Hunt! Find many fall festive images with a letter while walking in Riverside Park. Keep track of all letters and descramble them to create a phrase. Email it, with any pictures you took of your experience, to [recreationmail@ci.janesville.wi.us](mailto:recreationmail@ci.janesville.wi.us) or message us on our Janesville Parks and Recreation Facebook page to be entered in a drawing for a prize basket by November 30. One winner will be randomly selected from all the correct answers.



**Dates:** November 4 through November 30, 2024  
**Location:** Starts near the Riverside Park Splash Pad and ends near the Riverside Park North Pavilion, however, start at either end

**Message Us!**



**STORYWALK® SCAVENGER HUNT**

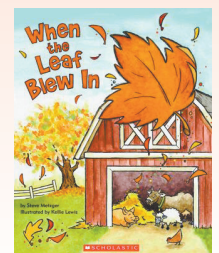
**FREE**

Walk along the trail in Sheiffer Park and enjoy reading the story *When the Leaf Blew In* during the month of October. Along the path you will find scrambled letters. Descramble the letters and message us your answer on our Janesville Parks and Recreation Facebook page or email us at [recreationmail@ci.janesville.wi.us](mailto:recreationmail@ci.janesville.wi.us) by October 31 to be entered into a drawing to win a prize basket. We would also love to see a picture of you enjoying the Storywalk® Scavenger Hunt.



**Story:** *When the Leaf Blew In*  
**Dates:** October 1 through October 31, 2024

**Location:** Trail in Sheiffer Park; Start at the trailhead located at Huntington/Avery Lane



# Enchanted Forest & Hollywood Hayride

## Dates and Times

Wednesday and Thursday, October 9 and 10 from 5:30-8:00 pm  
 Friday and Saturday, October 11 and 12 from 5:30-8:30 pm

## Location

Palmer Park, 2501 Palmer Drive

As the leaves hit the ground and nights become crisp, bring the family to Palmer Park. Enjoy the Halloween season by taking a stroll through the Enchanted Forest, a wagon ride on the Hollywood Hayride, play carnival games at the Goblin Games, or take a free barrel ride provided by the Optimist Club.

This year the Enchanted Forest will take you on a narrated candle-lit walk through Palmer's hillside to various acted scenes from your family's favorite children's books, fairytales, and nursery rhymes. Stop to take a picture with our local actors or in front of your favorite scene set.

The Hollywood Hayride will take you on a windy path stopping at several star-studded scenes from family-friendly movies and TV shows. At each stop our actors will perform a short skit and riders will receive a small trinket. Take pictures or sing and dance along to get in the spirit.



### Fee

**Enchanted Forest - \$3/person**

**Hollywood Hayride - \$3/person**

**Goblin Games - \$0.25/  
 ticket or \$1 for 5 tick-  
 ets. Each game is only  
 one ticket.**



**CASH ONLY!**

# Riverside

Drive-Thru



**Location:** Riverside Park, 2200 Parkside Drive

**Date and Time:** October 19 from 10 am-12 pm

**Fee:** Free

Enjoy the Halloween season by trick-or-treating through the car window at trunks sponsored by local businesses. Costume dress is encouraged and bring a bucket or bag to collect items.



**Wanted:** Local businesses/organizations/individuals to decorate your vehicle's trunk in a family appropriate manner and pass out candy or trinkets. Contact the Recreation Division at (608) 755-3030 to sign up or for more information.

## MIDDLE SCHOOL REC NITES

Don't miss out on the ever-popular Rec Nites featuring swimming, open gym, dancing, concessions, and raffles held at Edison, Franklin, and Marshall Middle Schools. Hosted by Janesville Recreation Division. Students must be in grades 6, 7, or 8 to attend and should only attend their school's Rec Nites. Homeschooled and Parochial school students are welcome to choose one school's Rec Nites to attend for the school year. Parents of these students should contact our office to register their student. Students ID's are required at check in. **Please note time change!**

Time	Grade	Fee
6:30-8 pm	6th, 7th, and 8th Grade	\$7/person (concessions extra)

2024-25 Dates		
Edison	Franklin	Marshall
Nov 15	Nov 8	Dec 6
Jan 17	Dec 13	Jan 31
Mar 7	Feb 7	Feb 21
April 11	April 4	Mar 14

Parents are encouraged to chaperone. Please call our office at (608) 755-3030. Children of chaperones receive free admission.

## 5TH GRADE REC NITE

This is an opportunity for all Janesville School District 5th graders to see what Rec Nite is all about! This Rec Nite is for 5th graders only and admits all 5th graders in the district.

Parents are encouraged to chaperone. Please call our office at (608) 755-3030. Children of chaperones receive free admission.

Date	Location	Time	Grade	Fee
May 2	Marshall MS	6:30-8:30 pm	5th Grade	\$7 (concessions extra)

## YOUTH/ADULT BEGINNING ARCHERY



Take your aim and shoot for some fun this winter! The Recreation Division partnered with the dedicated archers at Janesville Bowman, Inc. to offer Beginning Archery classes for youth and adults. Families are encouraged to sign up together. Each session features group, one-on-one instruction, and LOTS of shooting time!



Equipment is provided, or you may use your own. Janesville Bowmen is located at 5119 N. Fox Road. Please arrive 15 minutes prior to the first class to complete waivers. For additional information, please contact [jvlbowmenarchery@gmail.com](mailto:jvlbowmenarchery@gmail.com) or visit their website at <https://janesvillebowmen.wordpress.com/>. Register online at [www.janesvillewi.gov/register](http://www.janesvillewi.gov/register) or at the Janesville Recreation Division office.

**Minimum: 4 per session/Maximum 12 per session.**

Session	Dates	Location	Time	Ages	Fee	Reg. Deadline
1	Saturdays, Jan. 4, 18, 25	Janesville Bowman	10 am-12 pm	8 through adult	\$35	Jan. 1
2	Saturdays, Jan. 4, 18, 25	Janesville Bowman	12:45-2:45 pm	8 through adult	\$35	Jan. 1
3	Saturdays, Feb. 1, 15, 22	Janesville Bowman	10 am-12 pm	8 through adult	\$35	Jan. 29
4	Saturdays, Feb. 1, 15, 22	Janesville Bowman	12:45-2:45 pm	8 through adult	\$35	Jan. 29
5	Saturdays, Mar. 15, 22, 29	Janesville Bowman	10 am-12 pm	8 through adult	\$35	Mar. 12
6	Saturdays, Mar. 15, 22, 29	Janesville Bowman	12:45-2:45 pm	8 through adult	\$35	Mar. 12

## START SMART BASKETBALL



Start Smart is a six-week instructional program that helps parents teach their children, ages 4-6, the basics of basketball, such as dribbling, ball handling, passing, catching, shooting, and running. The program helps prepare children for organized youth sports by using safe, fun, and age-appropriate equipment to teach them the basic motor skills needed to play basketball, without the threat of competition or the fear of getting hurt. Both parents and children should dress in active clothes. Register online at [www.janesvillewi.gov/register](http://www.janesvillewi.gov/register) or at the Janesville Recreation office. **Minimum: 8/Maximum: 16**

Dates	Location	Time	Ages	Fee	Reg. Deadline
Thursdays, January 9-February 13	TBD School Gym	6-6:45 pm	4-6	\$45	Jan. 6

## START SMART SPORTS DEVELOPMENT



Start Smart is an instructional program that prepares youth ages 3-5 for organized sports without the fear of competition. Parents work with their child, the instructor, and other kids in a social setting to learn the basic skills of throwing, catching, kicking, and batting. Program goals are to increase individual skill development and assist parents in understanding their child's interest. Both parents and children should dress in active clothes. Register at [www.janesvillewi.gov/register](http://www.janesvillewi.gov/register) or at the Janesville Recreation office. **Minimum: 8/Maximum 16**

Dates	Location	Time	Ages	Fee	Reg. Deadline
Wednesdays, March 5- April 16 (No class March 26)	TBD School Gym	6-6:45 pm	3-5	\$45	Feb. 28

## WINTER HORSE CAMP



In partnership with Clean Sweep Farm, 8538 N. Serns Road Milton, WI, campers will play and have fun, while learning about horses. Camp takes place from 9 am-3 pm with daily activities including:



- ▶ Horse safety
- ▶ Horse breeds
- ▶ Proper horse & equipment care
- ▶ Sportsmanship
- ▶ Showmanship
- ▶ Crafts and games

Proper footwear (shoes or boots with no tread and a small heel) and helmets are required to ride. Helmets are available at the farm. **Please bring a lunch each day. Please pre-register online at [www.janesvillewi.gov/register](http://www.janesvillewi.gov/register) or at the Janesville Recreation Division office one week before camp begins! Minimum: 4/Maximum: 8**

Session & Dates	Location	Time	Ages	Fee
Session 1: November 29	Clean Sweep Farm	9 am-3 pm	5-17	\$100
Session 2: December 30 & 31	8538 N. Serns Road Milton, WI			\$200



**Register Here!**





## ADULT MEN'S BASKETBALL LEAGUES

The City's officiated basketball leagues begin in early January and will end towards the end of March or beginning of April. Leagues will be held at Franklin Middle School with the competitive league on Monday evenings and recreational league on Wednesday evenings. Information will be available on our website and at our office in early November. Please call our office at (608) 755-3030 if you are interested in being placed on our mailing list.



**Maximum: 8 teams/league**

Dates	Location	Times	Fee
Mondays (Competitive) and Wednesdays (Recreational) January-March or April	Franklin MS	6:15 pm, 7:15 pm, 8:15 pm, 9:15 pm	\$500

## EVENING CERAMICS

Learn the art of turning greenware into finished ceramic pieces. No extra charge for firing when the greenware is purchased from the Senior Center.



- Includes instruction and paints
- For beginners or experienced
- Additional costs apply when greenware is not purchased from the Senior Center

All ages are welcome to attend. An adult must accompany children under the age of 12.

Dates	Location	Time	Ages	Fee
Tuesdays, September 10, 2024-May 20, 2025	Senior Activity Center Ceramics Room	5:00-7:30 pm	All	\$5 per person per class

## ADULT CO-REC WINTER VOLLEYBALL LEAGUES

Organized league play will begin mid-January. Leagues play on Monday, Tuesday, Wednesday, and Thursday evenings (some nights have multiple leagues on a night); with Monday nights being the most competitive league and the nights get less competitive as it gets later in the week (Thursday nights are least competitive with only underhand serving allowed). Please have your team play on the night you fit based on your level of play, so it is fun for all teams. Information will be available on the website and office in early November. Please call our office at (608) 755-3030 if you are interested in being placed on our mailing list.



**Minimum: 4 teams per league**

Night	Location	Times	Fee
Monday-Thursday (Most Competitive-Recreational)	Marshall MS & Franklin MS	6:25 pm, 7:30 pm, & 8:35 pm	\$225 team fee (includes 10 players & 6 one-time subs)

## URBAN LINE DANCE

Urban Line Dancing is a style of dance that is done in rows. It does not require a partner. Those of us who already line dance know that it is a way of getting exercise. We love the music and the confidence that grows from mastering a dance. No prior experience is needed, and the class teaches the basics through easy dances. This is a drop-in class. We will need 10 people per class for the class to continue. If you have questions, please call the Senior Center at (608) 755-3040.

Dates	Location	Time	Ages	Fee
Thursdays, January 9-March 13	Riverview Room @ the Senior Center	6:30-7:30 pm	14+	\$6 each class (when you attend – pay as you go)

# JOIN OUR TEAM! NOW HIRING!



- Basketball Supervisor/Scorekeepers
- Basketball Referees
- Rec Nite Officials
- Volleyball Supervisors
- Ice Arena Supervisors & Skate Hosts
- Start Smart Sports Instructor

## Summer 2025 Positions Coming Soon! Applications Available January 2025!



- Office/Recreation Assistant
- Recreation Intern
- Softball Umpires
- Dawson Softball Complex Supervisors & Concession Attendants
- Head Camp Counselors, Camp Supervisors & Camp Counselors
- Lifeguards & Head Lifeguards
- Swim Instructors
- Pool Cashiers & Concession Attendants
- Start Smart Sports Instructor (Outdoor Classes)



**GAME RENTALS**

Bags .....	\$10
Bocce Ball .....	\$10
Giant 4 in a Row .....	\$10
Giant Jenga .....	\$10
Giant Yard Pong.....	\$10
Ladder Ball .....	\$10
Limbo Stand & Pole .....	\$5
Lollipop Tree.....	\$5
Plinko Game.....	\$5

**SMALL GATHERING ITEMS**

Portable Bluetooth Speaker .....	\$20
Recycle Bags.....	\$1 each
Recycle Bins.....	\$1 each
Table, 6ft. folding.....	\$5 each
Table, 6ft. non-folding .....	\$5 each

**SPORTS ITEMS**

Disc Golf Discs (Set of 3).....	\$5
Dodgeballs (Set of 6).....	\$10
Horseshoes (4 in Set).....	\$5
Pickle Ball Paddle & Ball.....	\$5
Shuffleboard Set (4 Cues & 8 Pucks) .....	\$10
Tug of War Rope.....	\$5

**WINTER EQUIPMENT RENTAL ITEMS**

Cross Country Ski Set .....	\$12/adult daily*
(includes: 1 pair each of skis, boots, and poles)	\$6/youth daily*
	\$16/adult weekend**
	\$10/youth weekend**
Snow Shoe Set.....	\$12/adult daily*
(includes: 1 pair each of shoes and poles)	\$6/youth daily*
	\$16/adult weekend**
	\$10/youth weekend**

\*Daily Fee pick up is Monday-Thursday and must be returned by 4 pm the next day.

\*\*Weekend Fee pick up is Friday and must be returned on Monday by 4 pm

**Available on first come first served basis; no reservations!!**

**Business Sponsors Needed For Self-Service Equipment Rental Kiosks In Parks Initiative**

The Parks and Recreation Divisions are looking to install self-service equipment rental kiosks in various parks. The kiosks would house rental equipment that can be used in the parks such as shuffleboard puck and cues, horseshoes, ping pong or pickleball paddles, volleyballs and more.



Each kiosk has a spot on the front for a sponsor logo! Kiosk sponsorships are \$3,000 each. For more details contact the Recreation Division office at 608-755-3030.

**FACILITY RENTALS**



**Traxler Park Warming House**

- Accommodates 50 people, picnic table seating.
- Has a serving kitchen and is fully enclosed.
- Beer/wine permit available with rental for \$50.
- Located at 651 N. Parker Drive.
- \*Cost is \$160/resident or \$190/non-resident.
- Contact the Recreation Division Office at (608) 755-3030 for availability or reserve online at [www.janesvillewi.gov/pavilions](http://www.janesvillewi.gov/pavilions).

(\*Fee increases by \$5 beginning Jan. 1)



**Senior Center Riverview Room**

- Seats up to 150 people and is 3,239 square feet.
- Has licensed commercial kitchen, a 12' by 24' stage, sound system with microphone for additional fee.
- Located at 69 S. Water Street (2nd floor of the Senior Center).
- Cost for Friday, Saturday, or Sunday rental (up to 5 hours) is \$400; additional time may be added for \$50/hour. The cost for rental on Friday, Saturday and Sunday will increase to \$450 starting January 1, 2025.
- Contact Vicki at (608) 755-3040 for availability.
- Other rooms available for rent Monday to Thursday evenings.

## DOG EXERCISE AREAS/DOG PARK

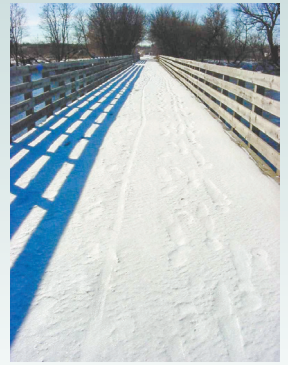
Except in designated dog park and dog exercise areas, dogs and cats are prohibited from Janesville parks and trails between May 15 and September 15 of each year. During permitted times, pets must be on a leash of 6' or less.

Dog exercise areas are found in designated portions of Palmer Park and the Rock River Parkway. You may use them daily from 5:00 am to 11:00 pm year-round. In these areas owners can exercise and train their dog without having to comply with the leash law. However, your dog must always be under owner's control. Also, owners are responsible for cleaning up after their pet.

Palmer Park has a dog run area within the boundaries of the park. Owners are asked to run their dogs in this established pet exercise area and not on the adjoining park green space. Also available is Paw Print Park fenced dog park, located at Prairie Knoll Park on 2700 South Oakhill Avenue near the Hwy. 11 bypass. A permit is required to use this park and may be purchased at the Parks and Recreation office in City Hall. The cost is \$15 annually or \$10 annually for those 60 & up. A daily cost paid at the park is \$3/per dog per visit. Permit applications and daily pass envelopes are also available at the park. All dogs 5 months and older must be licensed. City of Janesville residents may purchase a dog license at City Hall in the Clerk-Treasurer's office. A certificate showing current rabies vaccination and proof of spaying or neutering are required to purchase a dog license.

## BIKE TRAILS

During winter months, several miles of paved bike trail are cleared for use. Typically, volunteers clear the trail from the trail hub, located near Jackson & River Street to Tripp Road. City staff maintains from the trail hub east to Palmer Park, where Lexington and Mohawk intersect. Caution is advised when using the trail as slippery spots may be present. The Parks Division would like to thank the volunteers who make the trail accessible during the winter months as this would not be possible without their assistance and dedication.



## LUSTIG & RIVERSIDE PARK DISC GOLF COURSES

Lustig Park is home to a beautiful 18-hole disc golf course. Recently, 18 holes were added to Riverside Park giving disc golfers two excellent opportunities to play in Janesville. Discs can be rented at the Recreation Division office. Discs (set of 3) are \$5.00/day. The Friends of Lustig Park formed a "Parks Friend" group in 2010. Volunteers work to improve course conditions and raise money for course improvements. Updates on the course are provided by volunteers at [www.discgolfscene.com/clubs/Friends\\_of\\_Lustig\\_Park](http://www.discgolfscene.com/clubs/Friends_of_Lustig_Park) or check out the Friends of Lustig Park on Facebook.



## RIVERSIDE GOLF COURSE

Ranked as one of Southern Wisconsin's best public golf courses, Riverside Golf Course received a 3.5-star rating in the acclaimed *Golf Digest* and has been showcased as one of the top 50 best values in public golf in the country. Enjoy the beautiful fall color and mild weather at one of Southern Wisconsin's best golf courses. Don't forget about the pro shop. Get something for yourself and check a few items off of your holiday shopping list.



**Planning for the future?**

Grave sites available at

**Oak Hill Cemetery**

1725 N. Washington St.  
(608) 754-4030

[www.janesvillewi.gov/oakhill](http://www.janesvillewi.gov/oakhill)

**CITY OF JANESVILLE**  
*Wisconsin's Park Place*



**Address:** 69 S. Water Street • **Phone Number:** (608) 755-3040  
**Hours of Operation:** Monday-Friday 8:00 am-4:00 pm

- ▶ For all persons age 50+
- ▶ Abundance of programs offered daily including a variety of recreational, educational, and creative art activities, as well as advocacy, fellowship, and leadership opportunities
- ▶ \$25 annual membership fee\* (good for the calendar year), which is reduced to \$18 if you become a member after October 1

\* Annual membership increased to \$30 in 2025

### OFFERING TERRIFIC EXTENDED TRIPS

The Senior Center offers extended trips. They are available to anyone 18 and older. Take a look at our upcoming domestic and international trips.

#### 2025 "Great Trains & Grand Canyons"

(6 days) – (8 Meals) Departs October 19, 2025  
 Highlights include Two Rail Journeys - Grand Canyon Railway and Verde Canyon Railroad, Grand Canyon National Park, Oak Creek Canyon, Sedona Trolley Tour, Chapel of the Holy Cross, Tlaquepaque & Uptown Sedona, Montezuma Castle, Jerome, Chuckwagon Supper & Show. The detailed itinerary is available at the Senior Center. Price is per person, double occupancy for \$3525, thru July 21, 2025.



#### New for 2025 "Spotlight on Washington, D.C." Reservations taken thru Oct 10th, 2024 (OFFERED LIMITED TIME ONLY)

(7 days) – (11 meals) October 14-20, 2025  
 Explore America's heritage and history. Highlights include Capitol Building Tour, World War II Memorial, Washington National Cathedral, Choice on Tour: International Spy Museum or Lincoln Assassination Tour, Arlington National Cemetery, Mount Vernon, Old Town Alexandria, Vietnam Veterans Memorial, White House Visitor Center, Smithsonian Institution. Price is per person, double occupancy for \$2,999 until October 10, 2024.



#### 2025 "Discover Scotland"

(10 days) – (14 Meals) May 11-20, 2025  
 Scotland is a land of stunning landscapes. Highlights include bagpipe lessons, Isle of Skye, Loch Ness, Orkney Islands, Dunrobin Castle, Sheepdog Demonstration, Choice on Tour: McCaig's Tower or Dunollie Castle Museum, Edinburg Castle and a Scottish Cooking Experience. The detailed itinerary is available at the Senior Center. Price includes, air fare, hotel and what's in the itinerary. Price is per person, double occupancy for \$4,599 until November 12, 2024.



#### New for 2026 "Sunny Portugal"

(10 days) – (13 Meals) March 19-28, 2026  
 Highlights include Lisbon, Choice on Tour: "Calcadas" Walking Tour or "The Way of the Cod" Tour, Belem, Cork Factory, Evora, Alentejo, Lagos, Algarve, Portimão, Setúbal, Portuguese Riviera, Obidos, Sintra, Choice on Tour: National Palace of Sintra or Walking Tour, UNESCO World Heritage Sites. Price is per person, double occupancy for \$3,799 until September 20, 2025.  
 Call to find out about a travel preview. Brochures available with complete itinerary. Call the Senior Center at 755-3040 for more information about any of the upcoming extended trips.



## ACTIVITIES AND CLASSES OFFERED

### ART CLASSES:

Watercolor	M	1:00 p.m.
Big D Art Class	W	9:30 a.m.
Drawing & Painting*	F	1:00 p.m.

### CRAFT CLASSES:

Woodcarvers	M & TH	9:00 a.m.
Beginning Quilting	T	9:00 a.m.
Ceramics*	T & W	9:00 a.m.
Quilting	T	1:00 p.m.
Leather Tooling	W	1:00 p.m.
Sewing	TH	9:30 a.m.
Porcelain Class*	TH	12:00 p.m.
Scrapbooking	1st & 3rd TH	1:30 p.m.
Punch Needle	2nd & 4th TH	1:00 p.m.
Knitting	F	9:30 a.m.
Embroidery	1st & 3rd F	9:30 a.m.

### MUSIC GROUPS:

JAMM'in Ukes	M	12:45 p.m.
Choristers	M	1:00 p.m.
Water Street Band	M	2:00 p.m.
Blue Velvet Band Practice	W	9:30 a.m.
Mountain (Lap) Dulcimer	TH	1:00 p.m.

### CARD GROUPS:

500	M	12:00 p.m.
Duplicate Bridge	M	12:00 p.m.
Canasta	W	11:00 a.m.
Cribbage	TH	10:00 a.m.
Five Crowns	TH	1:00 p.m.
Friday Euchre Card Party*	F	12:45 p.m.

### GAMES:

Ping Pong	M, T, & TH	M 8:30 a.m., T&TH 10:30 a.m.
Cornhole	M 1st	9:30 a.m.
Pool (Billiards)	M-F	All Day
Scrabble	M	12:00 p.m.
Bingo*	T	12:30 p.m.
Dominos	W	9:30 a.m.
Mahjongg	W	12:30 p.m.
Rummikub	TH	9:30 a.m.

### FITNESS CLASSES:

Prime Time Fitness	M-TH	8:30 a.m.
Clogging	M, W, F	9:30 a.m.
Cardio Drumming	M, T, F	M-11:15 a.m., T-1:00 p.m., F-11:15 a.m.
Line Dance 2 (Beginners)	T	9:30 a.m.
Pom-Poms	T	10:30 a.m.
Chair Yoga*	T & F	10:30 a.m. & 9:30 a.m.
StrongBodies*	T & TH	1:00 p.m.
Tai Chi*	W	1:00 p.m.
Line Dance 1 (Basic)	TH	9:30 a.m.
Brain Fitness	4th F	10:00 a.m.

We provide a fitness room with 2 treadmills, a recumbent bike, and Gazelle for people to use. There is no charge for members, but you must sign in at the front desk to use the equipment.

### EDUCATIONAL CLASSES:

Memoir Writing	F	1:00 p.m.
----------------	---	-----------

### SOCIAL ACTIVITIES:

Book Club	2nd M	11:00 a.m.
Friday Dance Party	1st & 3rd F	9:30 a.m.
(Blue Velvet Band provides music for your listening and dancing pleasure)		
Movie Matinee	2nd F	9:30 a.m.

\*Extra charge for class

**Address:** 821 Beloit Avenue • **Phone:** (608) 755-3015  
**Website:** [www.janesvillewi.gov/ice](http://www.janesvillewi.gov/ice)

The Janesville Ice Arena provides opportunities for indoor skating. For those skaters who are looking for more than a recreational skate, we have that too! The Ice Arena is also home to the Janesville Jets of the Northern American Hockey League. Throughout the year we offer open hockey practice and league play for adults, figure skating, youth hockey practice, special skating events, and seasonal celebrations.

Please see [app.rectimes.com/janesville](http://app.rectimes.com/janesville) for Public Skate times.

**TEAMS/ACTIVITIES**

**Janesville Jets**

The Ice Arena is home to the Janesville Jets of the North American Hockey League. Get season or one day tickets to enjoy this fun family experience. The Jets schedule can be found at [www.janesvillejets.com](http://www.janesvillejets.com).



**Janesville Youth Hockey Club**

JYH is a not-for-profit, Division II club that runs from October through March each year. They encourage a non-competitive environment where girls and boys can learn basic skating and hockey skills. JYH believes learning the fundamentals of hockey and having fun playing the game are essential to the development of a lifelong interest in hockey. JYH has a variety of programs for participants ages 4-15 in five different levels of play including, Intro to Hockey - ages 4-8, In-House - ages 4-8, Red, White & Blue - ages 7-8, Squirt - ages 9-10, Pee Wee - ages 11-12, and Bantam - ages 13-15. Visit [www.janesvillyouthhockey.com](http://www.janesvillyouthhockey.com) or email [president@janesvillyouthhockey.com](mailto:president@janesvillyouthhockey.com) for more information.



**Figure Skating Club**

The Club welcomes new skaters of all skill levels year-round. The JFSC supports figure skaters in our area through competition, testing, fundraising, and activities. For questions, please contact Tracy Hegg at (608) 359-7384. <https://jfsc.clubexpress.com/>



**Polar Express Learn to Skate**

A basic skills program designed to teach beginning through advanced skating skills to skaters of all ages and abilities. Skaters progress through a series of eight levels and six freestyle levels. Classes meet for 30 minutes of instruction and 30 minutes of supervised practice time and includes skate rental. For more information, please contact Jean and Jeff Smecko, Program Directors at (608) 669-1903



**FEES**

Public Skate Sessions	Fees
Youth/Senior	\$7.00
Adult (18+)	\$7.00
Family Rate (includes skates)**	\$25.00
Skate Rental	\$3.00
Skate Sharpening	\$5.00

\*\*Adults w/children under 18 living in same household

**Hockey**

Open Hockey/Youth	\$8.00
Open Hockey/Adult	\$9.00

**BIRTHDAY PARTIES ON ICE**

**Public Skating Birthday Party**

**Pricing**

Birthday Package Cost = \$140  
 Over 25 Skate Rentals/Admissions = \$50 fee

**Package Includes -**

- Up to 25 Skate Rentals/Admissions
- Party Room Reservation
- Ability to bring store/restaurant-bought food/drink

*Package Does not include Skate Trainers (\$3) First-Come-First-Served*

**Private Skating Birthday Party**

**Pricing**

Birthday Package Cost = \$200  
 Over 50 Skate Rentals/Admissions = \$50 fee

**Package Includes -**

- 2 hours of private ice time**
- Up to 50 Skate Rentals/Admissions
- Use of the Party Room and Warming Room
- Ability to bring store/restaurant-bought food & drinks
- Skate Trainers

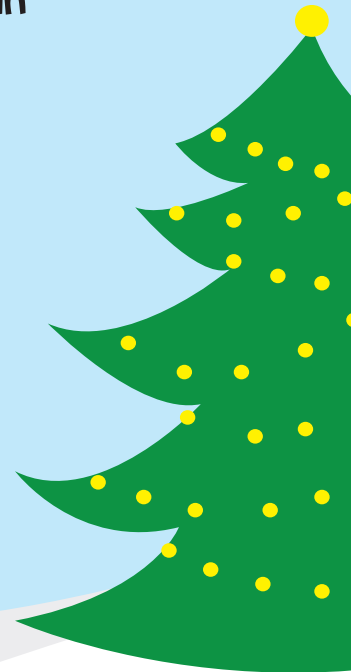
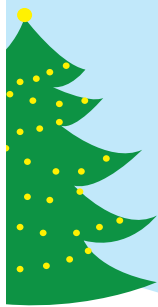
**Janesville Ice Arena Is Also Home To The**



To view available days/times, view our facility schedule at <https://app.rectimes.com/janesville> then either email [yostn@ci.janesville.wi.us](mailto:yostn@ci.janesville.wi.us) or call 608-755-3015 to book your party.

# Janesville's Jolly Jingle

December 6 - 8  
Downtown Janesville, Wisconsin  
A fun festive event



### Event Partners



### Community Partners



[JanesvilleJollyJingle.com](http://JanesvilleJollyJingle.com)  
for a full schedule of events.

Scan code for complete event details



# Janesville's Jolly Jingle

PARTNERSHIP PROGRAM

1st Weekend in December  
Downtown Janesville, Wisconsin



JANESVILLE'S JOLLY JINGLE

Janesville's Jolly Jingle is a three-day event (December 6-8) to kick off the holiday season. Please visit [www.JanesvilleJollyJingle.com](http://www.JanesvilleJollyJingle.com) for a full schedule of events. **Check out all the activities the Janesville Recreation Division is hosting at the Janesville's Jolly Jingle below!**

## Friday, December 6th, 2024

### Jingle Bell Hunt

**Time:** 5:30pm (before the holiday tree lighting ceremony)

**Fee:** Free

**Location:** Courthouse Park (51 S. Main Street)

**Description:** Thousands of jingle bells will be scattered on the ground. When more jingle bells are dropped from above, kids will run to collect bells, prizes, and special prize-winning bells. This fun event is for kids under age 12 and will occur before the official tree lighting ceremony in Courthouse Park.

### Holiday Tree Lighting

**Time:** 6:00pm

**Fee:** Free

**Location:** Courthouse Park (51 S. Main Street)

**Description:** Delight in the festive melodies as Versatile Voice Academy performs Taylor Swift Christmas songs. Then join the excitement of the official countdown and tree lighting, culminating in the Trinity Episcopal Choir leading the singing of "O Christmas Tree".



### Holiday Fireworks

**Time:** Shortly after conclusion of tree lighting ceremony, 6:45pm

**Fee:** Free

**Location:** Library Park (316 S. Main Street); See map for viewing locations

**Description:** A dazzling winter fireworks show with bursts of red, green, and gold fill the downtown sky illuminating the Rock River. Start the weekend with bursts of joy!

### Janesville Jets Game

**Time:** 7:05pm Game Time

**Fee:** \$7/youth, \$10/adult

**Location:** Janesville Ice Arena (821 Beloit Avenue)

**Description:** Janesville Jets ice hockey games are pure entertainment and skill on ice. Check out the team as they take on the Minnesota Wilderness in the North American Hockey League.

## Saturday, December 7th, 2024

### Spice on Ice Skate Show

**Time:** 10:00-11:30am

**Fee:** Non-perishable food donation for ECHO and the Salvation Army

**Location:** Janesville Ice Arena (821 Beloit Avenue)

**Description:** Enjoy a skate show with jumps, spins, and entertainment presented by the Janesville Figure Skating Club!

Sponsored by  
Janesville Figure  
Skating Club

### Skate with Elsa & Anna

**Time:** 11:30am-1:30pm

**Fee:** Free with attendance to the Spice on Ice Skate Show, otherwise a non-perishable food donation for ECHO and the Salvation Army and \$2 skate rental\*

\*Limited skate sizes available

**Location:** Janesville Ice Arena (821 Beloit Avenue)

**Description:** Come see Elsa and Anna from *Frozen* on skates and skate alongside them!

### Cookie Creations

**Time:** 3:30-5:30pm

**Fee:** Free (concessions extra)

**Location:** Janesville Senior Activity Center (69 South Water Street)

**Description:** Decorate your cookie on site or take it to go. A cookie, frosting, and sprinkles are provided while supplies last. Concessions available for purchase; support the Senior Center Advisory Board.

### Holiday Public Skate

**Time:** 4:00pm-5:30pm\*

\*Time subject to change, please check website ([www.janesvillewi.gov/ice](http://www.janesvillewi.gov/ice))

**Fee:** \$7 admission & \$3 skate rental

\$25 for family rate (includes skate rental)

**Location:** Janesville Ice Arena (821 Beloit Avenue)

**Description:** Skate to holiday tunes with family and friends!

### Holiday Lighted Parade

**Time:** 6:00pm

**Fee:** Free

**Location:** Downtown Janesville; See map for route information

**Description:** Be amazed at the themed lighted floats, marching groups, and others bringing holiday cheer and joy to downtown. Santa makes a grand entrance at the end of the parade.

### Janesville Jets Game

**Time:** 7:05pm Game Time

**Fee:** \$7/youth, \$10/adult

**Location:** Janesville Ice Arena (821 Beloit Avenue)

**Description:** Janesville Jets ice hockey games are pure entertainment and skill on ice. Check out the team as they take on the Minnesota Wilderness in the North American Hockey League.

## Sunday, December 8th, 2024

### Holiday Public Skate

**Time:** 3:00-4:30pm\*

\*Time subject to change, please check website ([www.janesvillewi.gov/ice](http://www.janesvillewi.gov/ice))

**Fee:** \$7 admission & \$3 skate rental

\$25 for family rate (includes skate rental)

**Location:** Janesville Ice Arena (821 Beloit Avenue)

**Description:** Skate to holiday tunes with family and friends!



# CITY OF JANESVILLE

## Fall & Winter

### BUCKET LIST

- |  |   |
|--|---|
| <input type="checkbox"/> COMPLETE THE FALL STORYWALK | <input type="checkbox"/> COMPLETE A CORN MAZE             |
| <input type="checkbox"/> TRICK OR TREAT              | <input type="checkbox"/> VISIT THE ENCHANTED FOREST       |
| <input type="checkbox"/> TAKE A HOLLYWOOD HAYRIDE    | <input type="checkbox"/> CARVE A PUMPKIN                  |
| <input type="checkbox"/> TRY A FALL SCAVENGER HUNT   | <input type="checkbox"/> TRUNK OR TREAT                   |
| <input type="checkbox"/> HEAR A CAMPFIRE GHOST STORY | <input type="checkbox"/> COMPETE IN GOBLIN GAMES          |
| <input type="checkbox"/> GO SLEDDING                 | <input type="checkbox"/> WATCH THE HOLIDAY LIGHTED PARADE |
| <input type="checkbox"/> BAKE COOKIES                | <input type="checkbox"/> ICE SKATE                        |
| <input type="checkbox"/> SEE THE HOLIDAY FIREWORKS   | <input type="checkbox"/> LOOK AT CHRISTMAS LIGHTS         |
| <input type="checkbox"/> WATCH THE JANESVILLE JETS   | <input type="checkbox"/> COMPLETE THE WINTER STORYWALK    |
| <input type="checkbox"/> GET A CALL FROM SANTA CLAUS | <input type="checkbox"/> LIGHT THE CITY TREE              |

Share Your Fall & Winter Adventures With The City!



nixle



[WWW.JANESVILLEWI.GOV](http://WWW.JANESVILLEWI.GOV)